

1153-1 Heavy Duty 2" Wide General Purposes Caster (European Style) Series



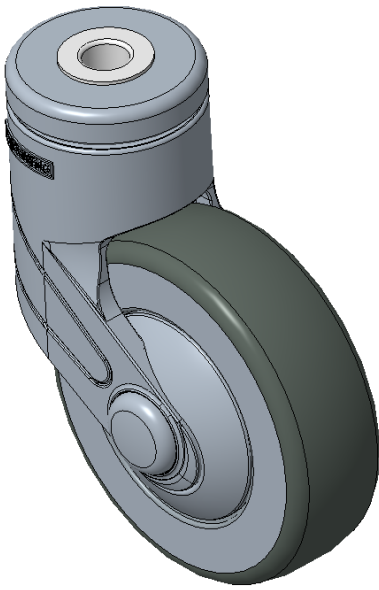
Rubber Wheel Diameter × Wheel Width 150 x 40mm

EAN	
TW-123	KS-123
YJ-123	VN-123

Rigid Caster with Stamping Fabricated Caster Fork
Zine-Plated, Mounting Type - Top Plate, Iron Plain Bearing
High-Quality Impact-Resistant Polypropylene core with High-Quality Resilient Rubber
Wheel Tread
Black, Plain Bearing.

Wheel surface: high-quality elastic rubber
Wheel Center: Made of high-quality impact-resistant polypropylene

Drawings are for reference only and may differ from the product



Picture may differ from original product

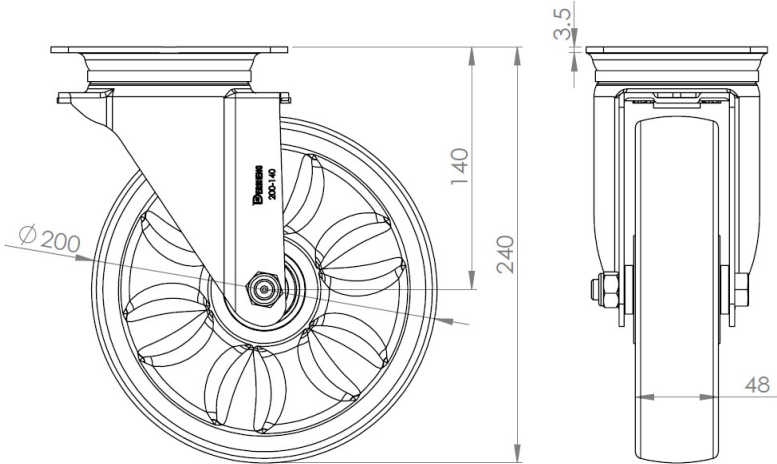
Technical Data

<input checked="" type="radio"/> Metric <input type="radio"/> Imperial	
Wheel Diameter	200mm
Wheel Width	100mm
Wheel Bearing	Wheel With Annual Ball Bearing
Threaded Stem	1-2 " -12牙
Threaded Size	100mm
Offset	100mm
Swivel Interference	100mm
Overall Height	189mm
Swivel Radius	100mm
Hardness Of Tread	80±5° Shore A
Load Capacity (Dynamic)	600kgs
Load Capacity (Static)	600kgs
Temperature	-20°C to +120°C
Fork Type	Rigid Caster
Stainless	N/A
Electrical Conductivity	N/A
Anti-Static	N/A
Weight	200kgs
Standard	ISO22883

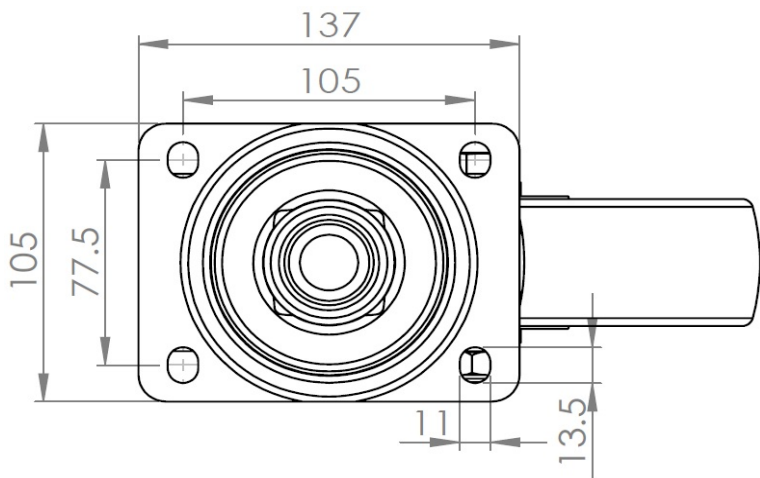
Advantages at a glance

Rolling Resistance	● ● ● ○ ○
Operating Noise	● ● ● ● ○
Floor Surface Preservation	● ● ● ● ○

Dimensions



Mounting



* For any deviation between metric and imperial spec, please refer to the metric spec.