



1102 B Type Caster Series

EQPU (blue) Wheel Diameter × Wheel Width 125 x 40 mm

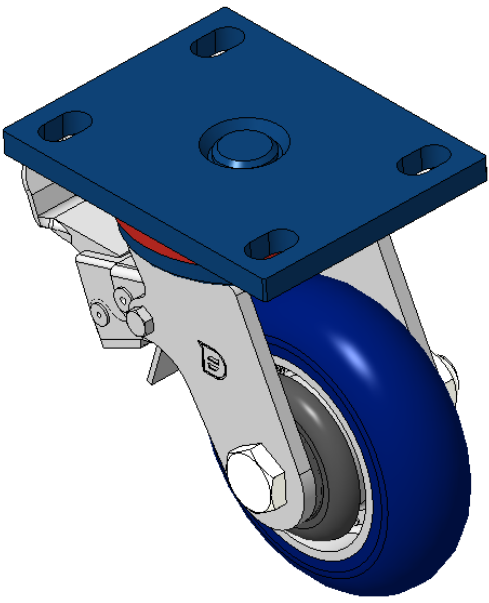
EAN

TW-4110205004052 KS-11020500554061

Casters equipped with a rear brake With locking system, Welded Caster Fork. Blue painted finish, Mounting Type - Top Plate, 110x75mm Bolt Hole Spacing. Cast Iron wheel center, High-Quality, high-elasticity rubber Wheel Tread, Cast Iron blue. Bearings—Ball Bearings, with specially designed anti-winding wheel covers.

Wheel surface: Made of high-quality, high-elasticity rubber  
Wheel hub: Iron wheel hub

Drawings are for reference only and may differ from the product



Picture may differ from original product

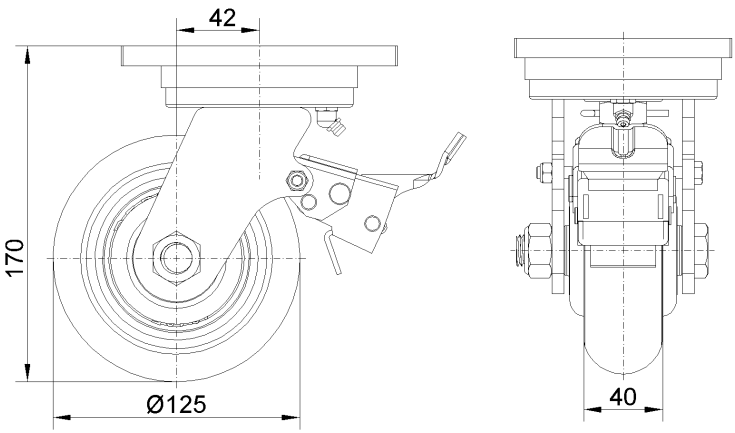
Technical Data

<input checked="" type="radio"/> Imperial <input type="radio"/> Metric	
Wheel Diameter	5 "
Wheel Width	1-5/8 "
Wheel Bearing	Wheels With Ball Bearings
Plate Size	5-9/16 " x 4-3/8 "
Bolt Hole Spacing	4-5/16 " x3"
Plate Hole	7/8 " x 9/16 "
Offset	1-11/16 "
Swivel Interference	8-1/2 "
Overall Height	6-13/16 "
Swivel Radius	4-1/4 "
Hardness Of Tread	87±5° Shore A
Load Capacity (Dynamic)	882lbs
Load Capacity (Static)	1323lbs
Temperature	-4°F to +158°F
Fork Type	Swivel Caster With Rear Brake
Stainless	N/A
Electrical Conductivity	N/A
Anti-Static	N/A
Weight	9.6lbs
Standard	ISO22883

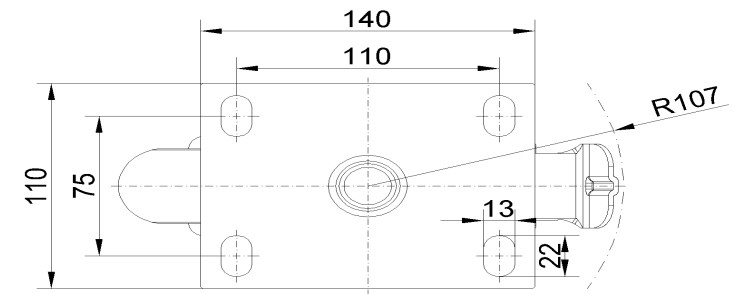
Advantages at a glance

Rolling Resistance	● ● ● ● ●
Operating Noise	● ● ● ● ●
Floor Surface Preservation	● ● ● ● ●

Dimensions



Mounting



\* For any deviation between metric and imperial spec, please refer to the metric spec.