



1106 Medical Caster Series

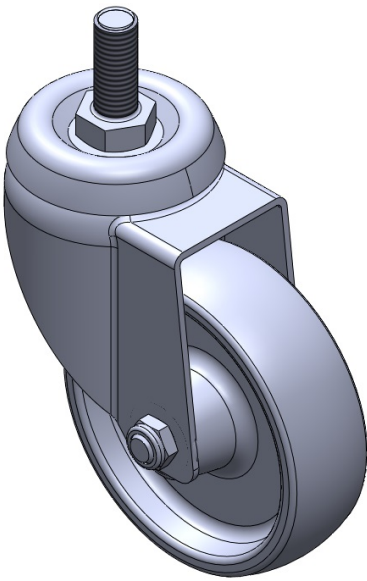
Nylon Wheel Diameter × Wheel Width 100 x 31mm

EAN  
TW-4110604002105

Swivel Caster with Riveted Stamping Fork - 1/2" - 12 UNC  
Zine-Plated, Mounting Type - Threaded Stem  
Reinforced Polypropylene core and Wheel Tread  
Bearing - Plain Bearing.

Wheel surface: Thermoplastic plastic (PA6)  
Wheel Center: Thermoplastic plastic (PA6)

Drawings are for reference only and may differ from the product



Picture may differ from original product

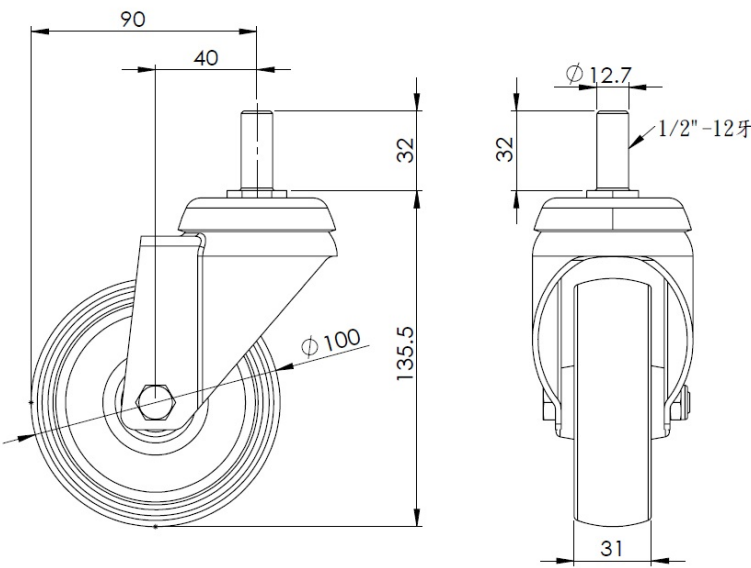
Technical Data

<input checked="" type="radio"/> Metric <input type="radio"/> Imperial	
Wheel Diameter	100mm
Wheel Width	31mm
Wheel Bearing	Wheel With Plain Bearing
Threaded Stem	1/2 " -12牙
Threaded Size	32mm
Offset	40mm
Swivel Interference	180mm
Overall Height	135.5mm
Swivel Radius	90mm
Hardness Of Tread	75±5° Shore D
Load Capacity (Dynamic)	120kgs
Load Capacity (Static)	180kgs
Temperature	-20°C to +80°C
Fork Type	Swivel Caster
Stainless	N/A
Electrical Conductivity	N/A
Anti-Static	N/A
Weight	0.55kgs
Standard	ISO22883

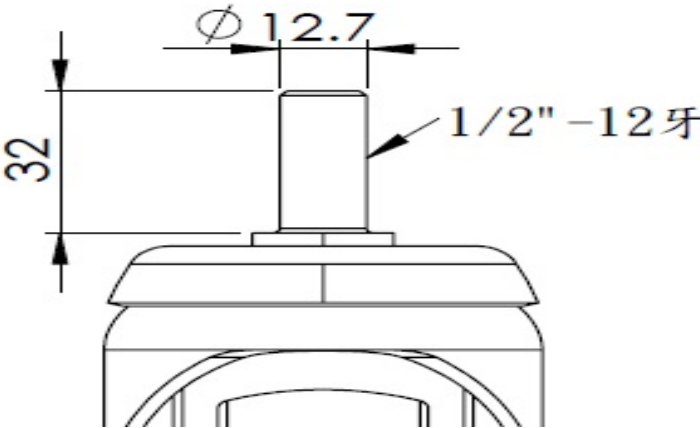
Advantages at a glance

Rolling Resistance	● ● ● ● ●
Operating Noise	● ● ○ ○ ○
Floor Surface Preservation	● ● ○ ○ ○

Dimensions



Mounting



\* For any deviation between metric and imperial spec, please refer to the metric spec.