



1106 Medical Caster Series

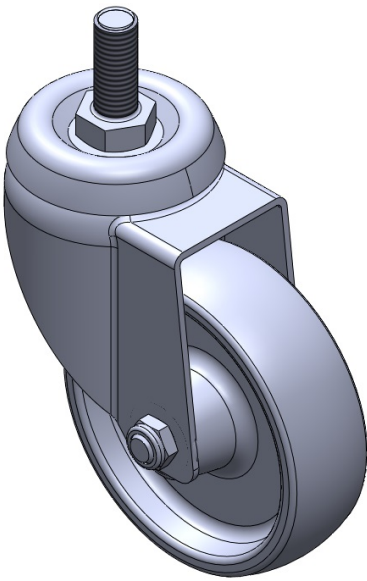
Nylon Wheel Diameter × Wheel Width 100 x 31mm

EAN
TW-4110604002105

Swivel Caster with Riveted Stamping Fork - 1/2" - 12 UNC
Zine-Plated, Mounting Type - Threaded Stem
Reinforced Polypropylene core and Wheel Tread
Bearing - Plain Bearing.

Wheel surface: Thermoplastic plastic (PA6)
Wheel Center: Thermoplastic plastic (PA6)

Drawings are for reference only and may differ from the product



Picture may differ from original product

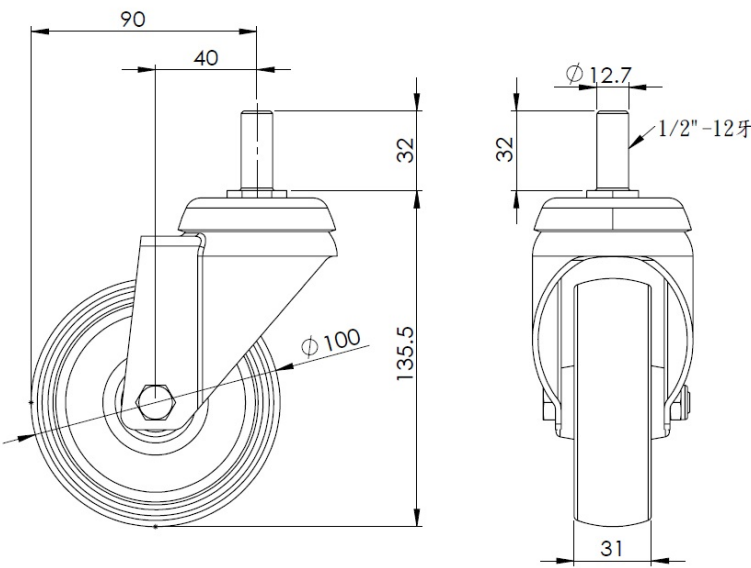
Technical Data

<input checked="" type="radio"/> Imperial <input type="radio"/> Metric	
Wheel Diameter	4 "
Wheel Width	1-1/4 "
Wheel Bearing	Wheel With Plain Bearing
Threaded Stem	1/2 " -12牙
Threaded Size	1-5/16 "
Offset	1-5/8 "
Swivel Interference	7-1/8 "
Overall Height	5-7/16 "
Swivel Radius	3-9/16 "
Hardness Of Tread	75±5° Shore D
Load Capacity (Dynamic)	265lbs
Load Capacity (Static)	397lbs
Temperature	-4°F to +176°F
Fork Type	Swivel Caster
Stainless	N/A
Electrical Conductivity	N/A
Anti-Static	N/A
Weight	1.2lbs
Standard	ISO22883

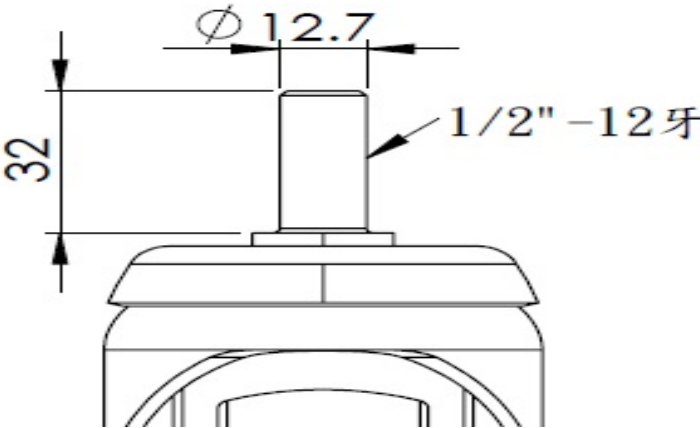
Advantages at a glance

Rolling Resistance	● ● ● ● ●
Operating Noise	● ● ○ ○ ○
Floor Surface Preservation	● ● ○ ○ ○

Dimensions



Mounting



* For any deviation between metric and imperial spec, please refer to the metric spec.