

1106 Medical Caster Series



Resolute Wheel Diameter × Wheel Width 100 x 31mm

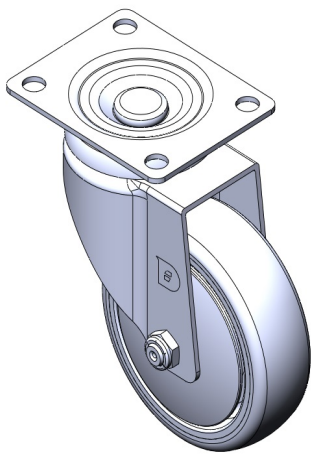
EAN

TW-4110604002129

Sliding Caster, Top Plate Riveted with Stamping Fork 72 x 53 mm (2-7/8" x 2-1/8") Bolt Hole Spacing Zine-Plated, Mounting Type - Top Plate High-quality Impact Resistance Polypropylene Wheel Center,High-Quality Thermoplastic Rubber (TPR) tread Dark gray, Bearing—Ball Bearing

Wheel tread: Thermoplastic rubber elastomer (TPR)
Wheel Center: Made of high-quality impact-resistant polypropylene

Drawings are for reference only and may differ from the product



Picture may differ from original product

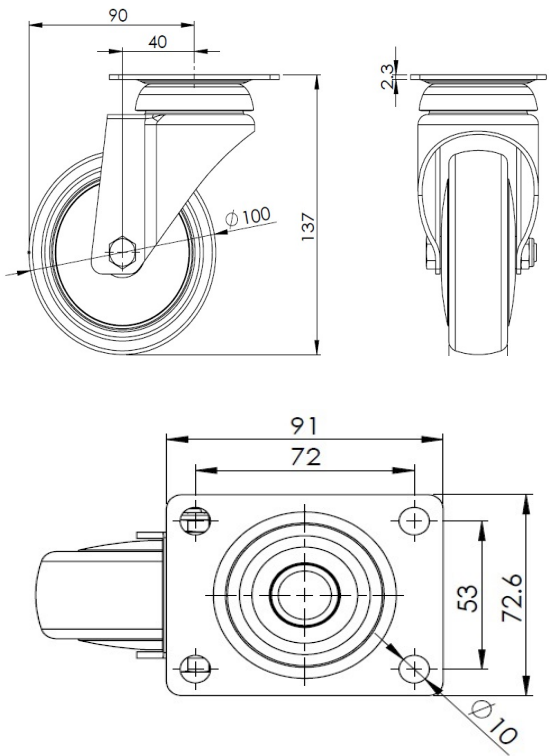
Technical Data

<input checked="" type="radio"/> Metric <input type="radio"/> Imperial	
Wheel Diameter	100mm
Wheel Width	31mm
Wheel Bearing	Wheels With Ball Bearings
Plate Size	91 x 72.6mm
Bolt Hole Spacing	72 x 53mm
Plate Hole	10mm
Offset	40mm
Swivel Interference	180mm
Overall Height	137mm
Swivel Radius	90mm
Hardness Of Tread	72±5° Shore A
Load Capacity (Dynamic)	125kgs
Load Capacity (Static)	187.5kgs
Temperature	-20°C to +60°C
Fork Type	Swivel Caster
Stainless	N/A
Electrical Conductivity	N/A
Anti-Static	N/A
Weight	0.75kgs

Advantages at a glance

Rolling Resistance	● ● ● ● ●
Operating Noise	● ● ● ● ●
Floor Surface Preservation	● ● ● ● ●

Dimensions



* For any deviation between metric and imperial spec, please refer to the metric spec.