

1109 Medium Duty/Low Profile Business Machine Caster Series



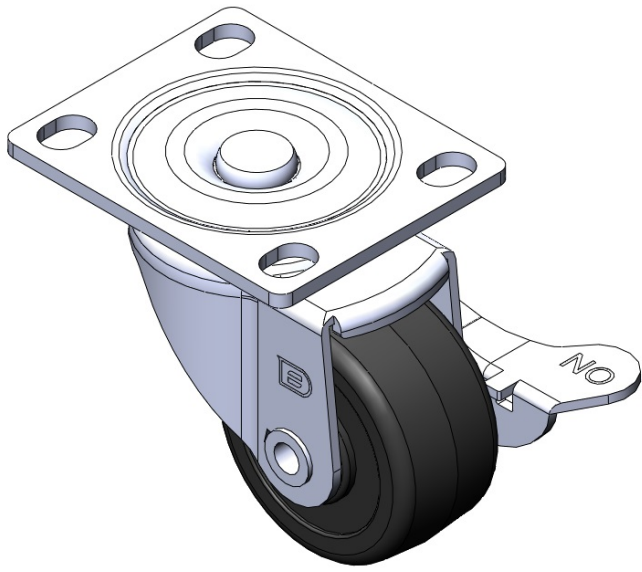
Nylon Wheel Diameter × Wheel Width 50 x 25mm

EAN
TW-4110902004001

Casters with Side Brakes and With locking system. Top Plate Riveted and Stamping.
Zine-Plated, Mounting Type - Top Plate.
Reinforced Polypropylene Wheel Center and Wheel Tread.
Bearing - Plain Bearing style.

Wheel tread: Thermoplastic
Wheel Center: Thermoplastic

Drawings are for reference only and may differ from the product



Picture may differ from original product

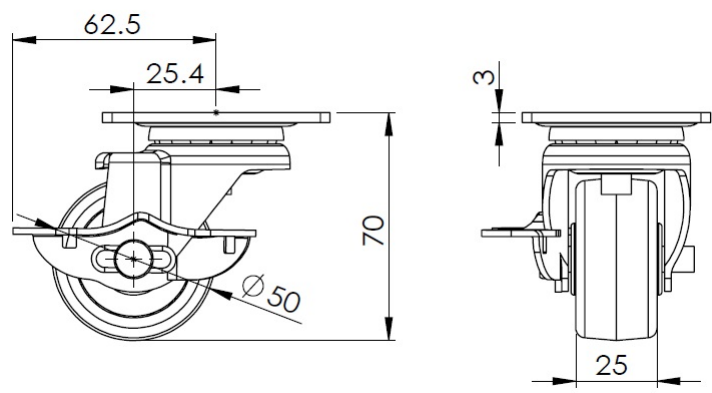
Technical Data

<input checked="" type="radio"/> Metric <input type="radio"/> Imperial	
Wheel Diameter	50mm
Wheel Width	25mm
Wheel Bearing	Wheel With Plain Bearing
Plate Size	70 x 58mm
Bolt Hole Spacing	56 x 40mm
Plate Hole	12 x 9mm
Offset	25.4mm
Swivel Interference	125mm
Overall Height	70mm
Swivel Radius	62.5mm
Hardness Of Tread	75±5° Shore D
Load Capacity (Dynamic)	70kgs
Load Capacity (Static)	105kgs
Temperature	-20°C to +80°C
Fork Type	Swivel Caster With Side Brake
Stainless	N/A
Electrical Conductivity	N/A
Anti-Static	N/A
Weight	0.35kgs
Standard	ISO22883

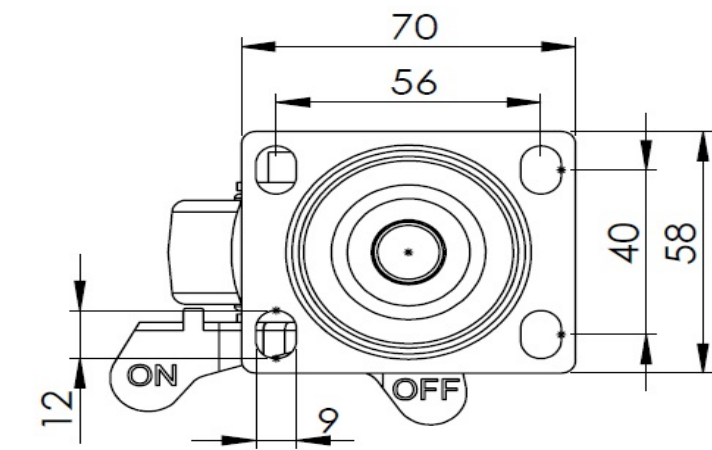
Advantages at a glance

Rolling Resistance	● ● ● ● ●
Operating Noise	● ● ○ ○ ○
Floor Surface Preservation	● ● ○ ○ ○

Dimensions



Mounting



* For any deviation between metric and imperial spec, please refer to the metric spec.