

1109 Medium Duty/Low Profile Business Machine Caster Series



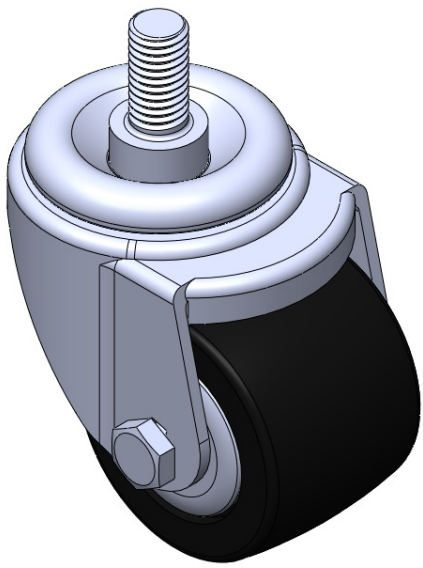
Nylon Wheel Diameter × Wheel Width 63 x 45mm

EAN  
TW-4110902052010

Swivel Caster, Riveted Stamping Fork - 1/2-13 threads  
Zine-Plated, Mounting Type - Threaded Stem  
Reinforced Polypropylene core and Wheel Tread  
Bearing - Ball Bearing

Wheel surface: Thermoplastic  
Wheel Center: thermoplastic

Drawings are for reference only and may differ from the product



Picture may differ from original product

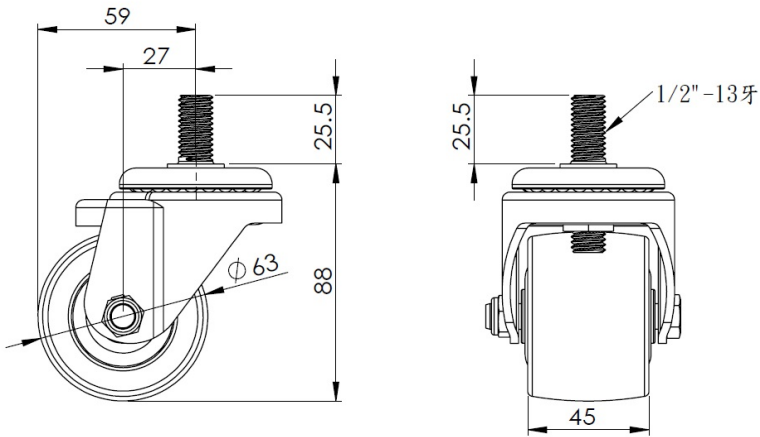
Technical Data

<input checked="" type="radio"/> Imperial <input type="radio"/> Metric	
Wheel Diameter	2-1/2 "
Wheel Width	1-13/16 "
Wheel Bearing	Wheels With Ball Bearings
Threaded Stem	1/2 " -13牙
Threaded Size	1-1/16 "
Offset	1-1/16 "
Swivel Interference	4-11/16 "
Overall Height	3-1/2 "
Swivel Radius	2-3/8 "
Hardness Of Tread	75±5° Shore D
Load Capacity (Dynamic)	551lbs
Load Capacity (Static)	827lbs
Temperature	-4°F to +176°F
Fork Type	Swivel Caster
Stainless	N/A
Electrical Conductivity	N/A
Anti-Static	N/A
Weight	1.1lbs
Standard	ISO22883

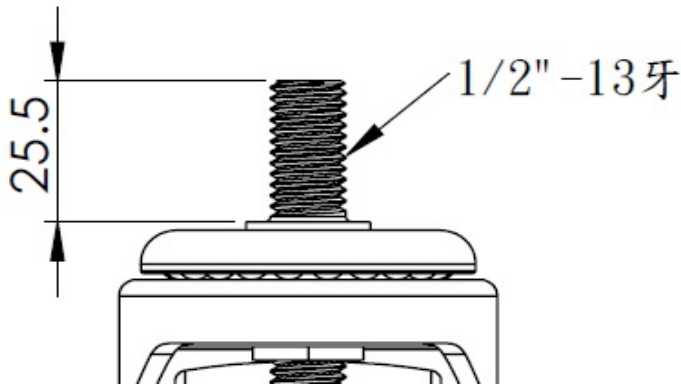
Advantages at a glance

Rolling Resistance	● ● ● ● ●
Operating Noise	● ● ○ ○ ○
Floor Surface Preservation	● ● ○ ○ ○

Dimensions



Mounting



\* For any deviation between metric and imperial spec, please refer to the metric spec.