

1109 Medium Duty/Low Profile Business Machine Caster Series



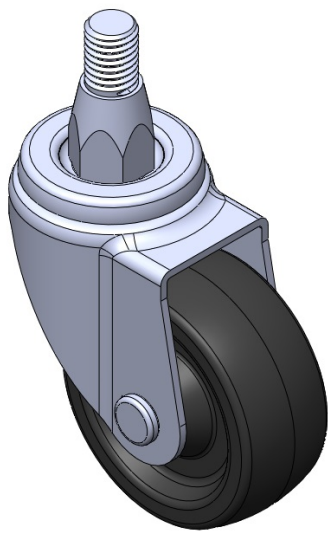
PP Wheel Diameter x Wheel Width 62.5 x 26mm

EAN  
TW-4110902052012

Swivel Caster with Riveted, Stamping Fork—M12-P1.75 Zine-Plated, Mounting Type - Top Plate Polypropylene core and Wheel Tread Black, Plain Bearing.

Wheel tread: PP polypropylene  
Wheel Center: PP polypropylene

Drawings are for reference only and may differ from the product



Picture may differ from original product

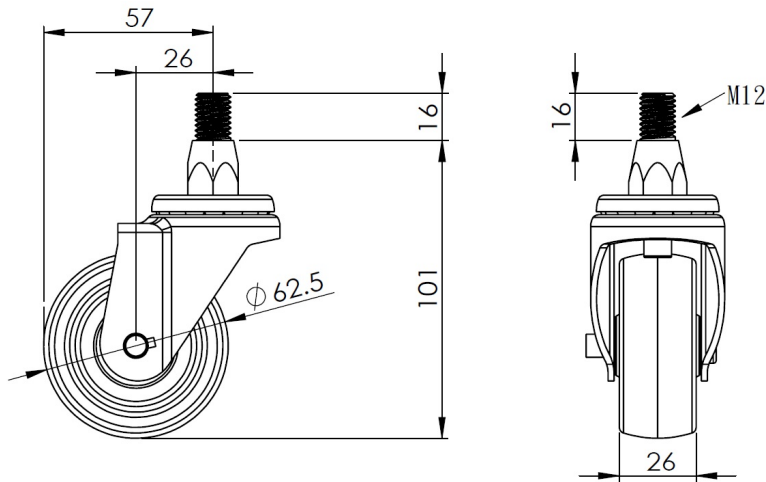
Technical Data

<input checked="" type="radio"/> Imperial <input type="radio"/> Metric	
Wheel Diameter	2-1/2 "
Wheel Width	26mm
Wheel Bearing	Wheel With Plain Bearing
Threaded Stem	M12-P1.75
Threaded Size	11/16 "
Offset	1-1/16 "
Swivel Interference	4-1/2 "
Overall Height	4 "
Swivel Radius	2-1/4 "
Hardness Of Tread	65±5° Shore D
Load Capacity (Dynamic)	309lbs
Load Capacity (Static)	463lbs
Temperature	14°F to +140°F
Fork Type	Swivel Caster
Stainless	N/A
Electrical Conductivity	N/A
Anti-Static	N/A
Weight	1.1lbs
Standard	ISO22883

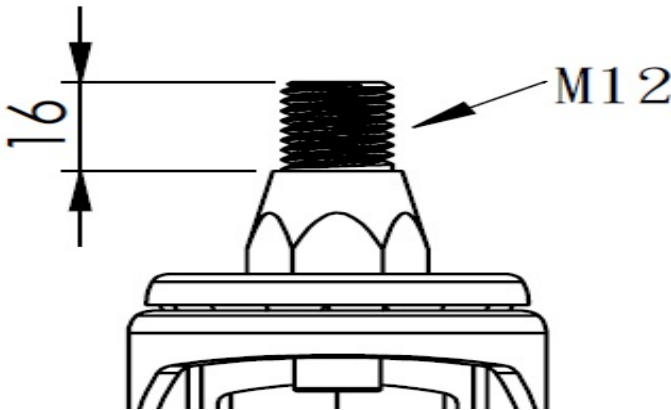
Advantages at a glance

Rolling Resistance	● ● ● ● ●
Operating Noise	● ● ● ○ ○
Floor Surface Preservation	● ● ● ○ ○

Dimensions



Mounting



\* For any deviation between metric and imperial spec, please refer to the metric spec.