

1109 Medium Duty/Low Profile Business Machine Caster Series



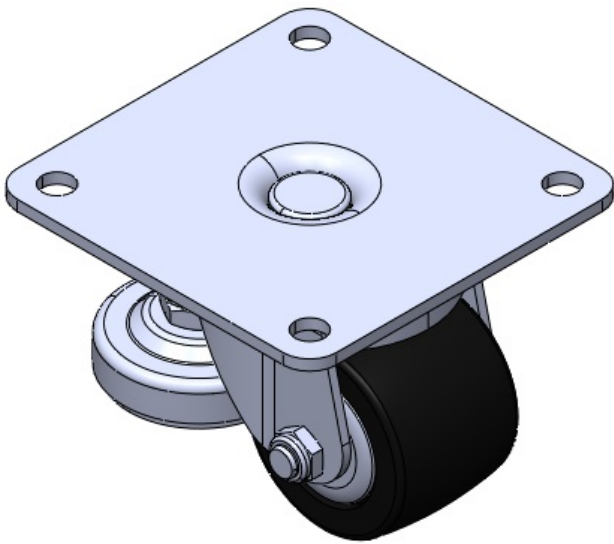
Nylon Wheel Diameter × Wheel Width 63 x 45mm

EAN  
TW-4110902052013

Swivel Caster with Riveted Fork and Stamping Fork. Zine-Plated, Mounting Type - Top Plate (with support feet). Reinforced Polypropylene and Wheel Tread. Bearings—Ball Bearings.

Wheel surface: Thermoplastic plastic (PA6)  
Wheel Center: Thermoplastic plastic (PA6)

Drawings are for reference only and may differ from the product



Picture may differ from original product

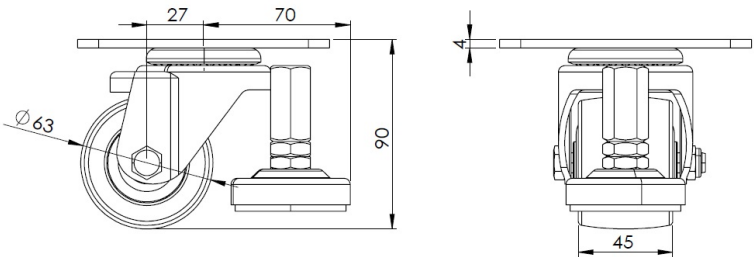
Technical Data

<input checked="" type="radio"/> Metric <input type="radio"/> Imperial	
Wheel Diameter	63mm
Wheel Width	45mm
Wheel Bearing	Wheels With Ball Bearings
Plate Size	120 x 120mm
Bolt Hole Spacing	95 x 95mm
Plate Hole	11mm
Offset	27mm
Swivel Interference	140mm
Overall Height	90mm
Swivel Radius	70mm
Hardness Of Tread	75±5° Shore D
Load Capacity (Dynamic)	250kgs
Load Capacity (Static)	375kgs
Temperature	-20°C to +80°C
Fork Type	Swivel Caster
Stainless	N/A
Electrical Conductivity	N/A
Anti-Static	N/A
Weight	1.2kgs
Standard	ISO22883

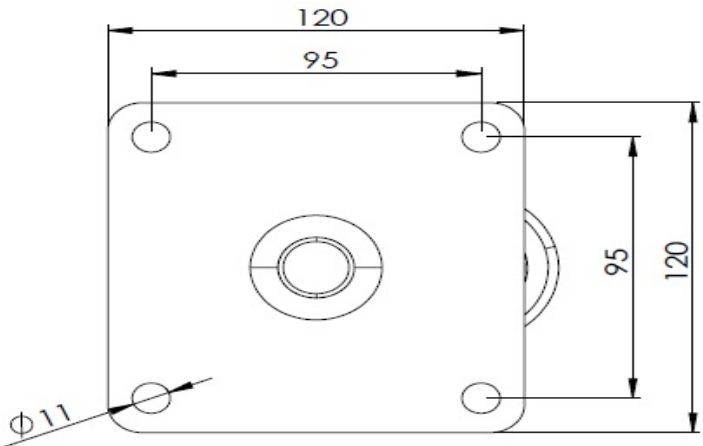
Advantages at a glance

Rolling Resistance	● ● ● ● ●
Operating Noise	● ● ○ ○ ○
Floor Surface Preservation	● ● ○ ○ ○

Dimensions



Mounting



\* For any deviation between metric and imperial spec, please refer to the metric spec.