

1109 Medium Duty/Low Profile Business Machine Caster Series



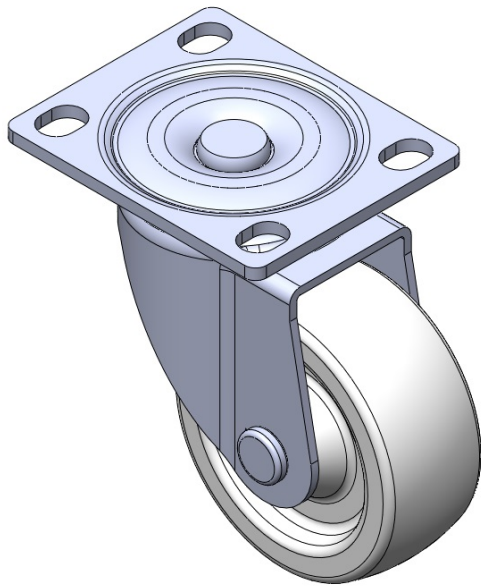
Nylon Wheel Diameter × Wheel Width 63 x 26mm

EAN  
TW-4110902052019

Swivel Caster with Riveted Fork and Stamping Fork.  
Zine-Plated, Mounting Type - Top Plate.  
Reinforced Polypropylene Wheel Center and Wheel Tread.  
Bearing - Plain Bearing.

Wheel tread: Thermoplastic  
Wheel Center: Thermoplastic

Drawings are for reference only and may differ from the product



Picture may differ from original product

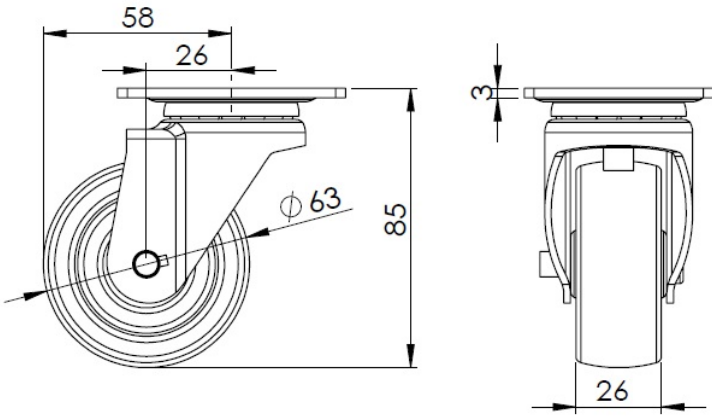
Technical Data

<input checked="" type="radio"/> Metric <input type="radio"/> Imperial	
Wheel Diameter	63mm
Wheel Width	26mm
Wheel Bearing	Wheel With Plain Bearing
Plate Size	70 x 58mm
Bolt Hole Spacing	56 x 40mm
Plate Hole	12 x 9mm
Offset	26mm
Swivel Interference	116mm
Overall Height	85mm
Swivel Radius	58mm
Hardness Of Tread	75±5° Shore D
Load Capacity (Dynamic)	250kgs
Load Capacity (Static)	375kgs
Temperature	-20°C to +80°C
Fork Type	Swivel Caster
Stainless	N/A
Electrical Conductivity	N/A
Anti-Static	N/A
Weight	0.7kgs
Standard	ISO22883

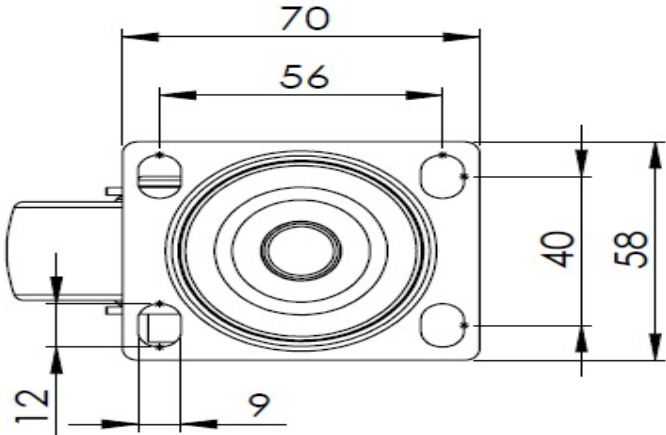
Advantages at a glance

Rolling Resistance	● ● ● ● ●
Operating Noise	● ● ○ ○ ○
Floor Surface Preservation	● ● ○ ○ ○

Dimensions



Mounting



\* For any deviation between metric and imperial spec, please refer to the metric spec.