

1109 Medium Duty/Low Profile Business Machine Caster Series



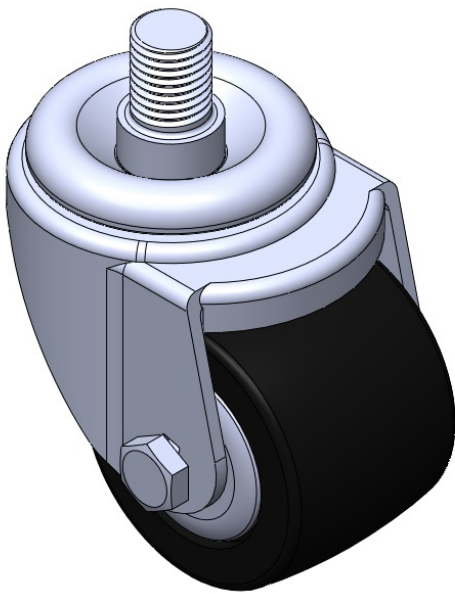
Nylon Wheel Diameter × Wheel Width 63 × 45mm

EAN  
TW-4110902052020

Swivel Caster, thread-Riveted Stamping Fork—M16-2.0  
Zine-Plated, Mounting Type - Threaded Stem  
Reinforced Polypropylene core and Wheel Tread  
Bearing—Ball Bearing.

Wheel tread: Thermoplastic  
Wheel Center: Thermoplastic

Drawings are for reference only and may differ from the product



Picture may differ from original product

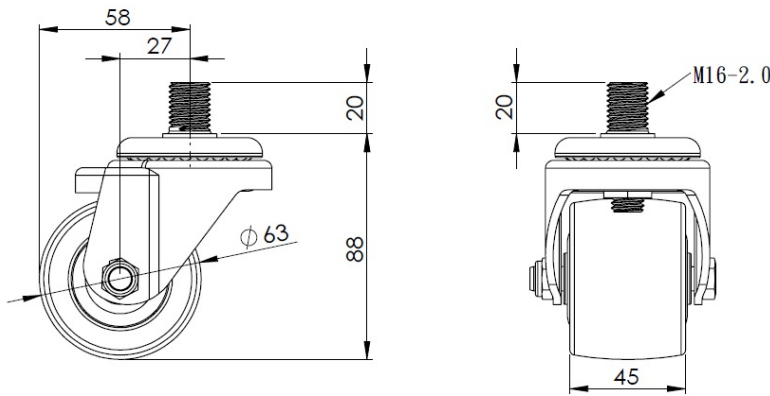
Technical Data

<input checked="" type="radio"/> Metric <input type="radio"/> Imperial	
Wheel Diameter	63mm
Wheel Width	45mm
Wheel Bearing	Wheels With Ball Bearings
Threaded Stem	M16-2.0
Threaded Size	20mm
Offset	27mm
Swivel Interference	116mm
Overall Height	88mm
Swivel Radius	58mm
Hardness Of Tread	75±5° Shore D
Load Capacity (Dynamic)	250kgs
Load Capacity (Static)	375kgs
Temperature	-20°C to +80°C
Fork Type	Swivel Caster
Stainless	N/A
Electrical Conductivity	N/A
Anti-Static	N/A
Weight	0.5kgs
Standard	ISO22883

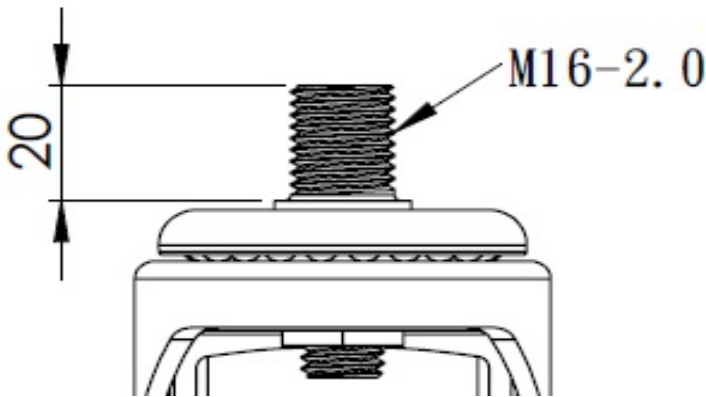
Advantages at a glance

Rolling Resistance	● ● ● ● ●
Operating Noise	● ● ○ ○ ○
Floor Surface Preservation	● ● ○ ○ ○

Dimensions



Mounting



\* For any deviation between metric and imperial spec, please refer to the metric spec.