

1109 Medium Duty/Low Profile Business Machine Caster Series



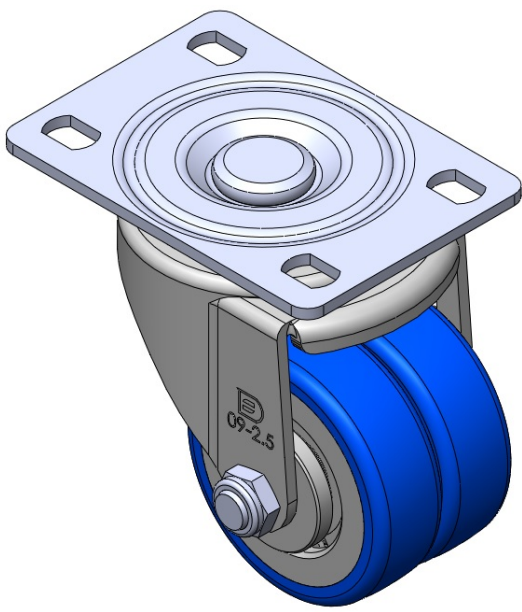
ZQPU Wheel Diameter × Wheel Width 63 x 20mm

EAN  
TW-4110902052025

Portable Casters, Riveted and Stamping Top Plate—high-grade perforated design  
Zine-Plated surface, Mounting Type - Top Plate device  
Cast Iron Wheel Center, High Quality Polyurethane Wheel Tread  
Blue color, Bearing—Ball Bearings.

Wheel surface: High-quality polyurethane  
Wheel Center: Iron core/Cast iron core

Drawings are for reference only and may differ from the product



Picture may differ from original product

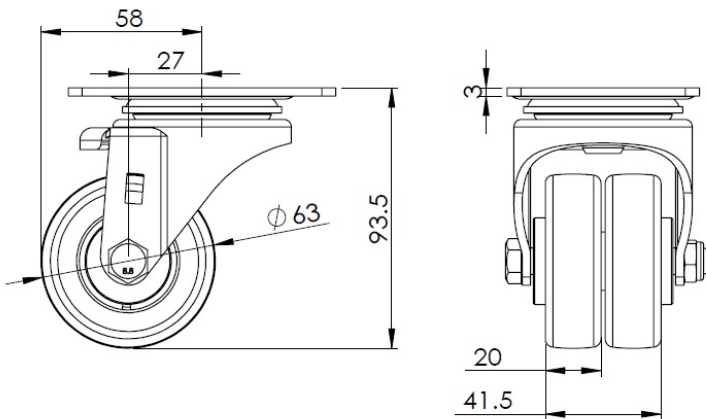
Technical Data

<input checked="" type="radio"/> Metric <input type="radio"/> Imperial	
Wheel Diameter	63mm
Wheel Width	20mm
Wheel Bearing	Wheels With Ball Bearings
Plate Size	96 x 69mm
Bolt Hole Spacing	75 x 45mm
Plate Hole	13 x 9mm
Offset	27mm
Swivel Interference	116mm
Overall Height	93.5mm
Swivel Radius	58mm
Hardness Of Tread	87±5° Shore A
Load Capacity (Dynamic)	300kgs
Load Capacity (Static)	450kgs
Temperature	-20°C to +70°C
Fork Type	Swivel Caster
Stainless	N/A
Electrical Conductivity	N/A
Anti-Static	N/A
Weight	0.75kgs
Standard	ISO22883

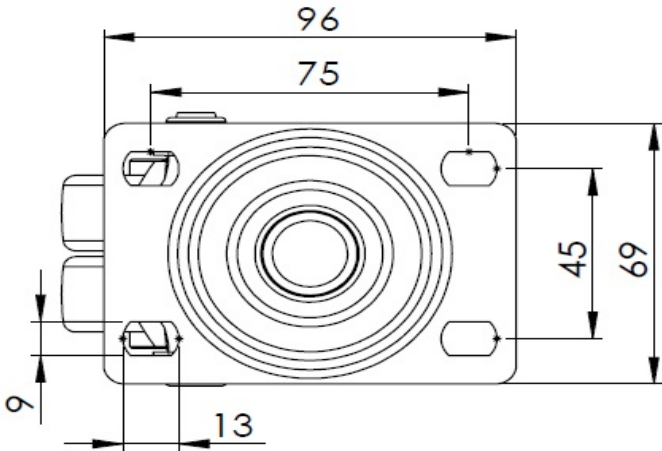
Advantages at a glance

Rolling Resistance	● ● ● ● ●
Operating Noise	● ● ● ● ●
Floor Surface Preservation	● ● ● ● ●

Dimensions



Mounting



\* For any deviation between metric and imperial spec, please refer to the metric spec.