

1109 Medium Duty/Low Profile Business Machine Caster Series



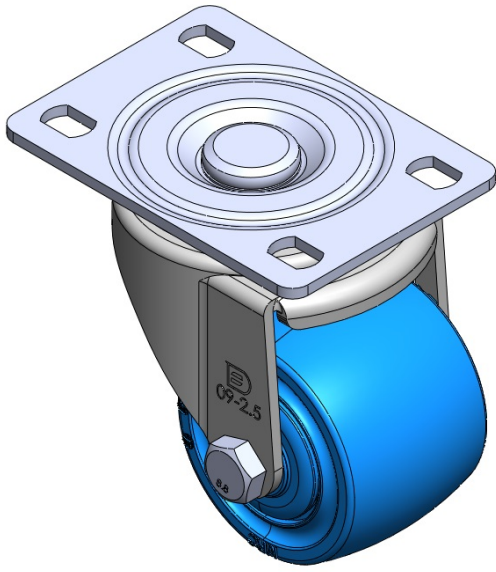
King Kong Wheel Diameter × Wheel Width 63 x 45mm

EAN  
TW-4110902052029

Swivel Caster with Riveted Fork and Stamping Fork—75 x 45 mm (3" x 1-3/4") Bolt Hole Spacing  
Zine-Plated, Mounting Type - Top Plate  
Reinforced Polypropylene Wheel Center and Wheel Tread  
Bearings—Ball Bearings.

Wheel tread: Thermoplastic  
Wheel Center: Thermoplastic

Drawings are for reference only and may differ from the product



Picture may differ from original product

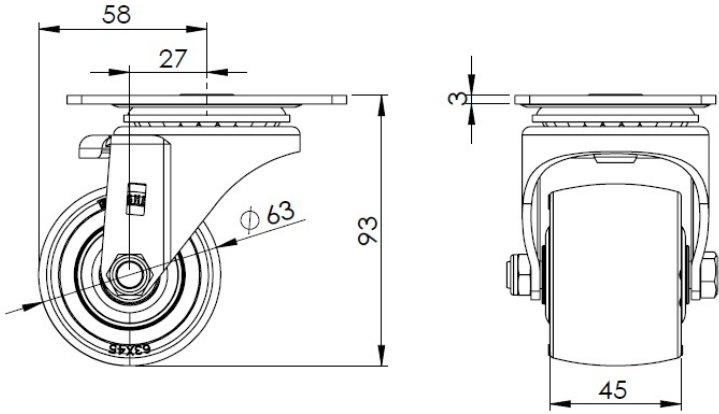
Technical Data

<input checked="" type="radio"/> Imperial <input type="radio"/> Metric	
Wheel Diameter	2-1/2 "
Wheel Width	1-13/16 "
Wheel Bearing	Wheels With Ball Bearings
Plate Size	3-7/8 " x 2-3/4 "
Bolt Hole Spacing	3 " x 1-13/16 "
Plate Hole	1/2 " x 23/64 "
Offset	1-1/16 "
Swivel Interference	4-5/8 "
Overall Height	3-11/16 "
Swivel Radius	2-5/16 "
Hardness Of Tread	75±5° Shore D
Load Capacity (Dynamic)	772lbs
Load Capacity (Static)	1157lbs
Temperature	-4°F to +176°F
Fork Type	Swivel Caster
Stainless	N/A
Electrical Conductivity	N/A
Anti-Static	N/A
Weight	1.5lbs
Standard	ISO22883

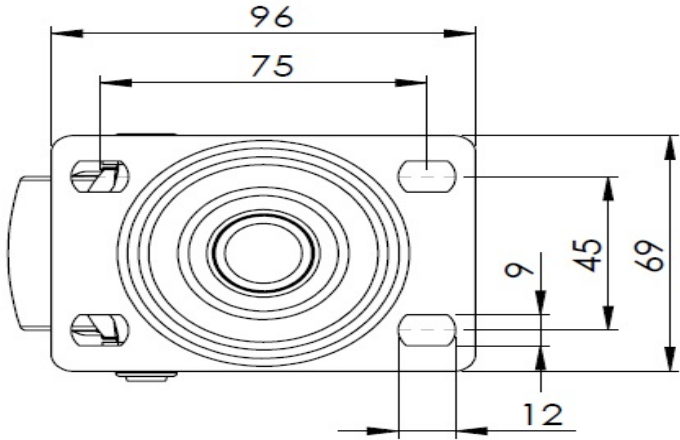
Advantages at a glance

Rolling Resistance	● ● ● ● ●
Operating Noise	● ● ○ ○ ○
Floor Surface Preservation	● ● ○ ○ ○

Dimensions



Mounting



\* For any deviation between metric and imperial spec, please refer to the metric spec.