

1109 Medium Duty/Low Profile Business Machine Caster Series



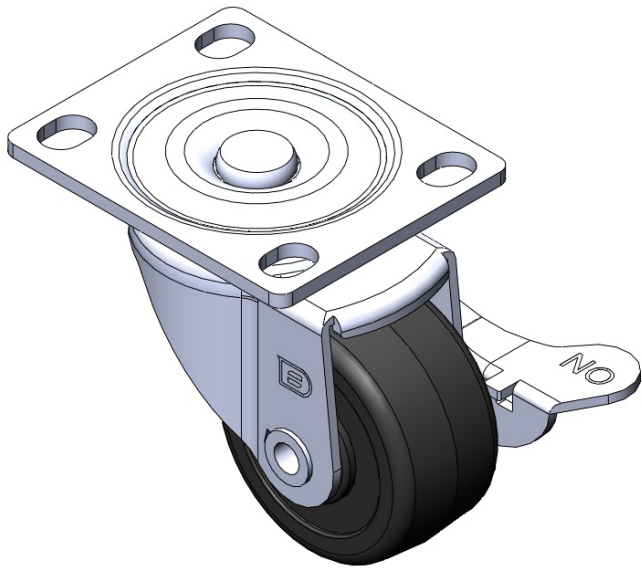
PP Wheel Diameter x Wheel Width 62.5 x 26mm

EAN
TW-4110902054001

Casters with Side Brakes and With locking system. Top Plate Riveted and Stamping. Zinc-plated finish, Mounting Type - Top Plate. Polypropylene Wheel Center and Wheel Tread. Black. Bearing - Plain Bearing.

Wheel tread: PP polypropylene
Wheel Center: PP polypropylene

Drawings are for reference only and may differ from the product



Picture may differ from original product

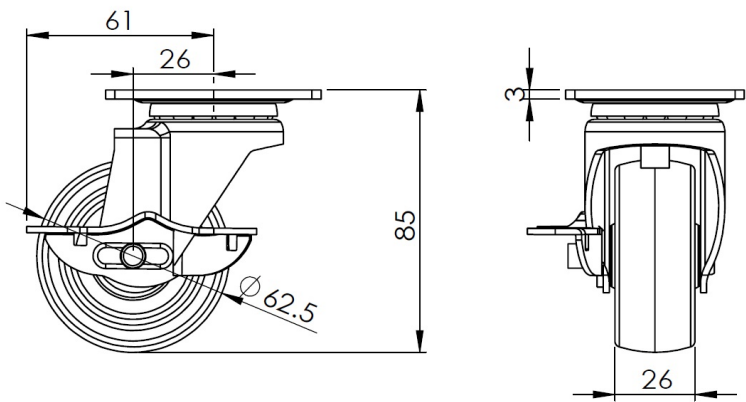
Technical Data

<input checked="" type="radio"/> Metric <input type="radio"/> Imperial	
Wheel Diameter	62.5mm
Wheel Width	26mm
Wheel Bearing	Wheel With Plain Bearing
Plate Size	70 x 58mm
Bolt Hole Spacing	56 x 40mm
Plate Hole	12 x 9mm
Offset	26mm
Swivel Interference	122mm
Overall Height	70mm
Swivel Radius	61mm
Hardness Of Tread	65±5° Shore D
Load Capacity (Dynamic)	70kgs
Load Capacity (Static)	105kgs
Temperature	-10°C to +60°C
Fork Type	Swivel Caster With Side Brake
Stainless	N/A
Electrical Conductivity	N/A
Anti-Static	N/A
Weight	0.75kgs
Standard	ISO22883

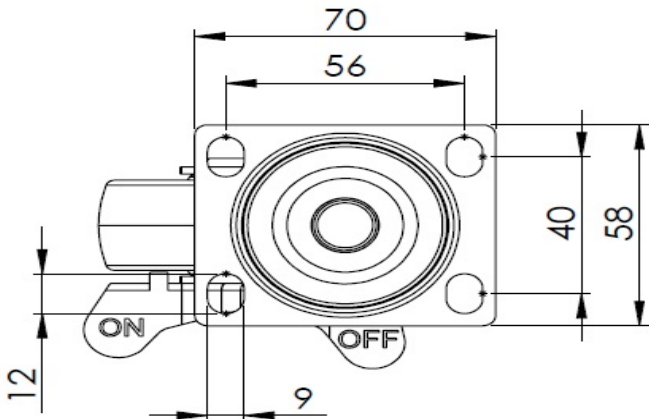
Advantages at a glance

Rolling Resistance	● ● ● ● ●
Operating Noise	● ● ● ○ ○
Floor Surface Preservation	● ● ● ○ ○

Dimensions



Mounting



* For any deviation between metric and imperial spec, please refer to the metric spec.