

1109 Medium Duty/Low Profile Business Machine Caster Series



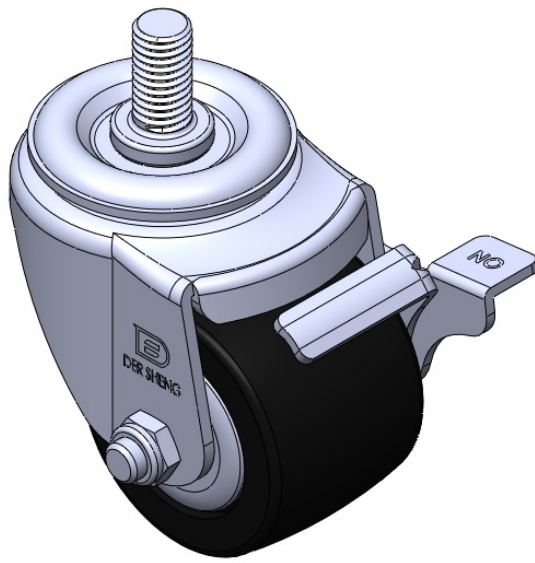
Nylon Wheel Diameter × Wheel Width 63 x 45mm

EAN  
TW-4110902054002

Casters with Side Brakes and With locking system. Threaded Stem Riveted Pressed Fork – 1/2-13 threads.  
Zine-Plated, Mounting Type - Threaded Stem.  
Reinforced Polypropylene Wheel Center and Wheel Tread.  
Bearing – Ball Bearing.

Wheel surface: Thermoplastic  
Wheel Center: thermoplastic

Drawings are for reference only and may differ from the product



Picture may differ from original product

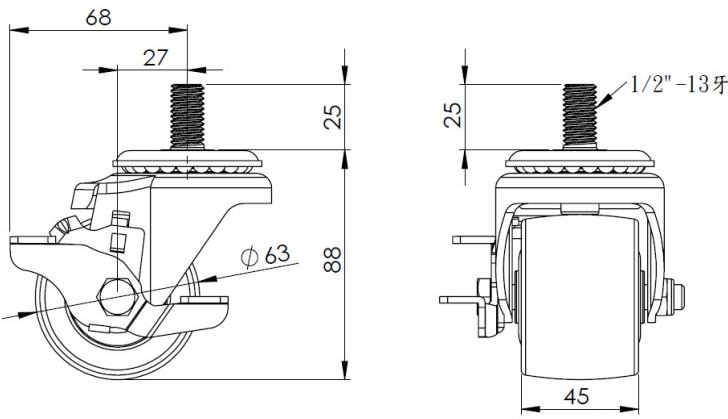
Technical Data

<input checked="" type="radio"/> Metric <input type="radio"/> Imperial	
Wheel Diameter	63mm
Wheel Width	45mm
Wheel Bearing	Wheels With Ball Bearings
Threaded Stem	1/2 " -13牙
Threaded Size	25mm
Offset	27mm
Swivel Interference	136mm
Overall Height	88mm
Swivel Radius	68mm
Hardness Of Tread	65±5° Shore D
Load Capacity (Dynamic)	250kgs
Load Capacity (Static)	375kgs
Temperature	-10°C to +60°C
Fork Type	Swivel Caster With Side Brake
Stainless	N/A
Electrical Conductivity	N/A
Anti-Static	N/A
Weight	0.60kgs
Standard	ISO22883

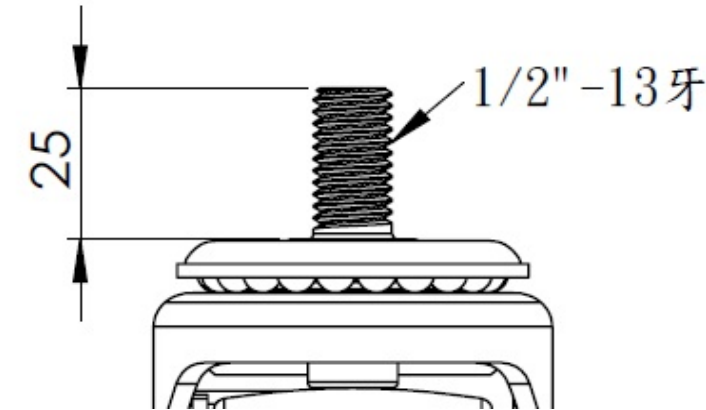
Advantages at a glance

Rolling Resistance	● ● ● ● ●
Operating Noise	● ● ● ○ ○
Floor Surface Preservation	● ● ● ○ ○

Dimensions



Mounting



\* For any deviation between metric and imperial spec, please refer to the metric spec.