

1109 Medium Duty/Low Profile Business Machine Caster Series



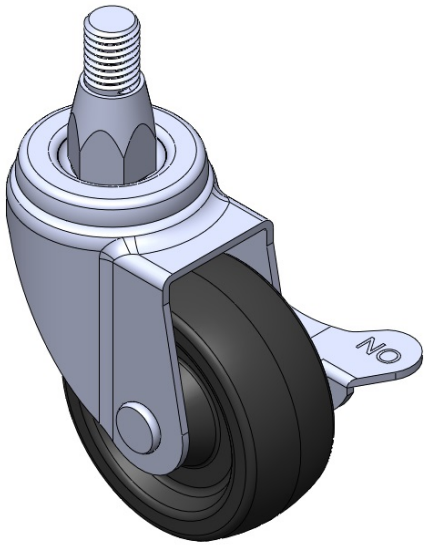
PP Wheel Diameter x Wheel Width 62.5 x 26mm

EAN  
TW-4110902054006

Casters with Side Brakes and With locking system. Threaded Stem Riveted Pressed Fork – M12-P1.75. Zine-Plated, Mounting Type - Top Plate. Polypropylene Wheel Center and Wheel Tread. Black. Wheel – Plain Bearing.

Wheel tread: PP polypropylene  
Wheel Center: PP polypropylene

Drawings are for reference only and may differ from the product



Picture may differ from original product

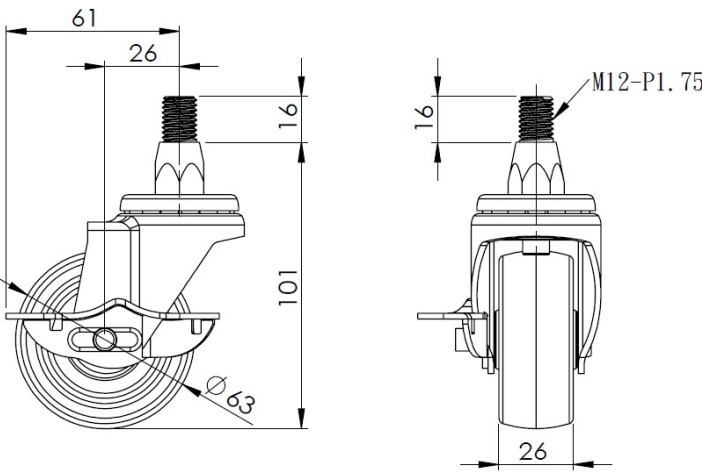
Technical Data

<input checked="" type="radio"/> Metric <input type="radio"/> Imperial	
Wheel Diameter	63mm
Wheel Width	26mm
Wheel Bearing	Wheel With Plain Bearing
Threaded Stem	M12-P1.75
Threaded Size	16mm
Offset	26mm
Swivel Interference	122mm
Overall Height	101mm
Swivel Radius	61mm
Hardness Of Tread	65±5° Shore D
Load Capacity (Dynamic)	70kgs
Load Capacity (Static)	105kgs
Temperature	-10°C to +60°C
Fork Type	Swivel Caster With Side Brake
Stainless	N/A
Electrical Conductivity	N/A
Anti-Static	N/A
Weight	0.60kgs
Standard	ISO22883

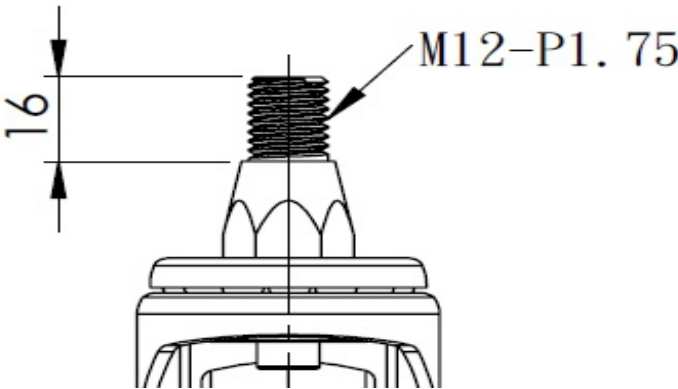
Advantages at a glance

Rolling Resistance	● ● ● ● ●
Operating Noise	● ● ● ○ ○
Floor Surface Preservation	● ● ● ○ ○

Dimensions



Mounting



\* For any deviation between metric and imperial spec, please refer to the metric spec.