

1109 Medium Duty/Low Profile Business Machine Caster Series



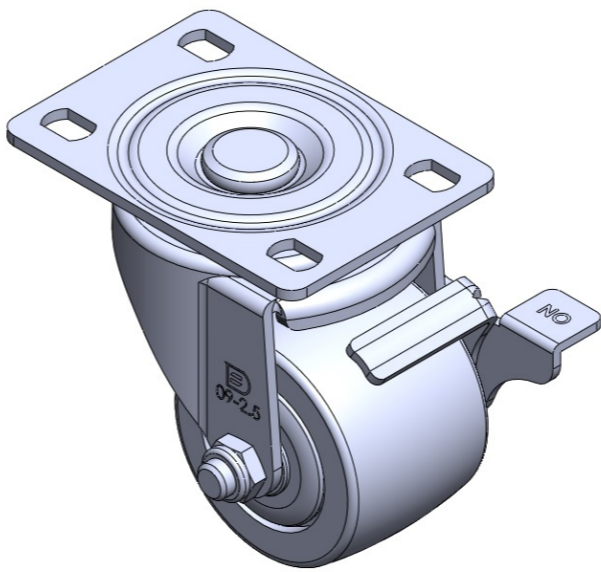
Nylon Wheel Diameter × Wheel Width 63 x 45mm

EAN
TW-4110902054011

Casters with Side Brakes and With locking system. High-Quality, Riveted, Stamping Fork. Hole Zine-Plated, Mounting Type - Top Plate. Reinforced Polypropylene and Wheel Tread. Ball Bearing bearings.

Wheel tread: Thermoplastic
Wheel Center: Thermoplastic

Drawings are for reference only and may differ from the product



Picture may differ from original product

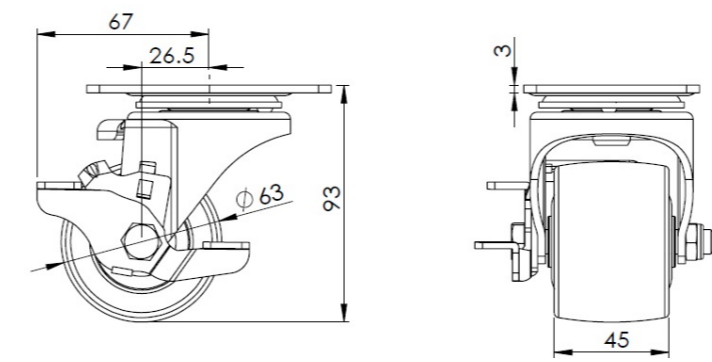
Technical Data

| | |
|--|-------------------------------|
| <input checked="" type="radio"/> Metric <input type="radio"/> Imperial | |
| Wheel Diameter | 63mm |
| Wheel Width | 45mm |
| Wheel Bearing | Wheels With Ball Bearings |
| Plate Size | 96 x 69mm |
| Bolt Hole Spacing | 75 x 45mm |
| Plate Hole | 13 x 9mm |
| Offset | 26.5mm |
| Swivel Interference | 134mm |
| Overall Height | 93mm |
| Swivel Radius | 67mm |
| Hardness Of Tread | 75±5° Shore D |
| Load Capacity (Dynamic) | 250kgs |
| Load Capacity (Static) | 375kgs |
| Temperature | -20°C to +80°C |
| Fork Type | Swivel Caster With Side Brake |
| Stainless | N/A |
| Electrical Conductivity | N/A |
| Anti-Static | N/A |
| Weight | 0.75kgs |
| Standard | ISO22883 |

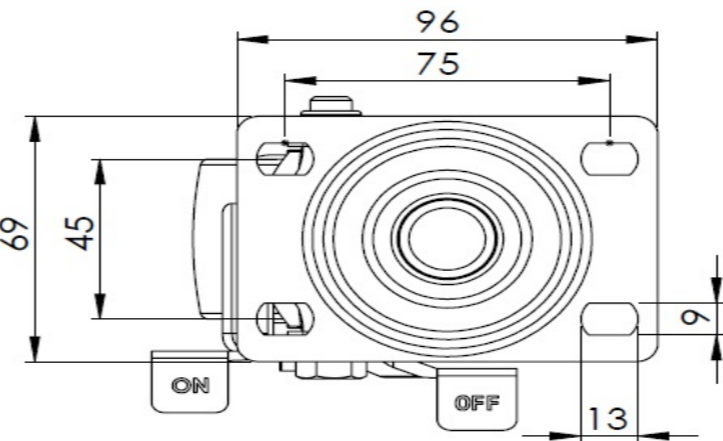
Advantages at a glance

| | |
|----------------------------|-----------|
| Rolling Resistance | ● ● ● ● ● |
| Operating Noise | ● ● ○ ○ ○ |
| Floor Surface Preservation | ● ● ○ ○ ○ |

Dimensions



Mounting



* For any deviation between metric and imperial spec, please refer to the metric spec.