

1109 Medium Duty/Low Profile Business Machine Caster Series



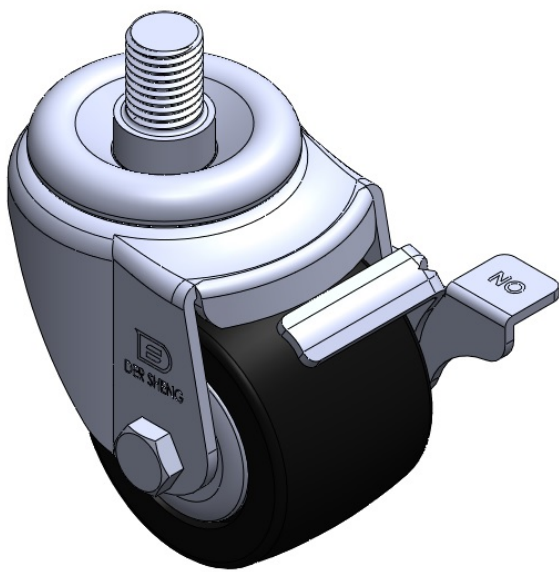
Nylon Wheel Diameter × Wheel Width 63 x 45mm

EAN  
TW-4110902054012

Casters with Side Brakes and With locking system. Threaded Stem Riveted Pressed Fork – M16-P2.0  
Zine-Plated, Mounting Type - Threaded Stem  
Reinforced Polypropylene and Wheel Tread  
Bearings – Ball Bearings.

Wheel tread: Thermoplastic  
Wheel Center: Thermoplastic

Drawings are for reference only and may differ from the product



Picture may differ from original product

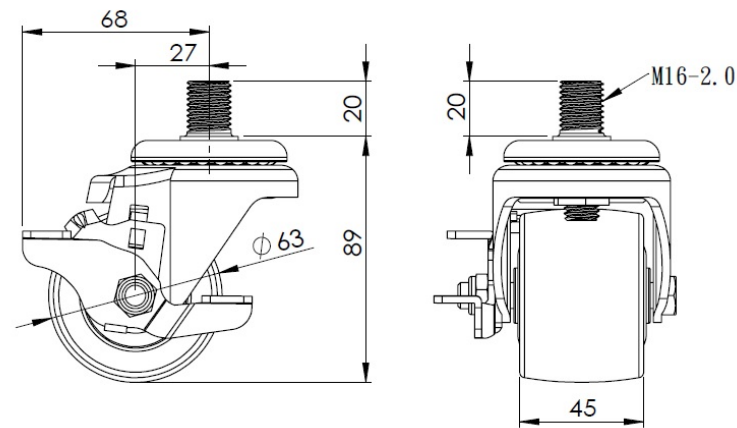
Technical Data

<input checked="" type="radio"/> Metric <input type="radio"/> Imperial	
Wheel Diameter	63mm
Wheel Width	45mm
Wheel Bearing	Wheels With Ball Bearings
Threaded Stem	M16-P2.0
Threaded Size	20mm
Offset	27mm
Swivel Interference	136mm
Overall Height	89mm
Swivel Radius	68mm
Hardness Of Tread	65±5° Shore D
Load Capacity (Dynamic)	250kgs
Load Capacity (Static)	375kgs
Temperature	-10°C to +60°C
Fork Type	Swivel Caster With Side Brake
Stainless	N/A
Electrical Conductivity	N/A
Anti-Static	N/A
Weight	0.60kgs
Standard	ISO22883

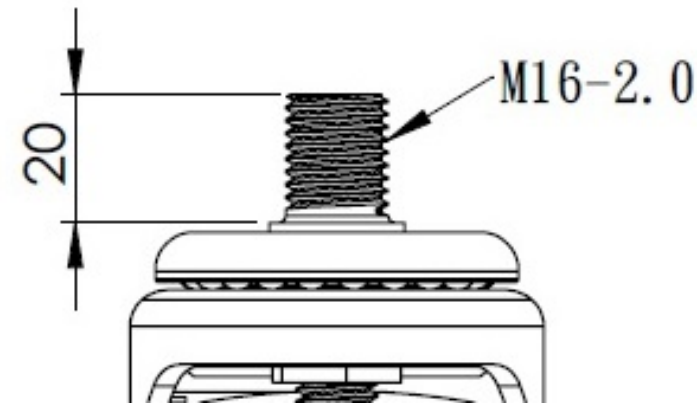
Advantages at a glance

Rolling Resistance	● ● ● ● ●
Operating Noise	● ● ● ○ ○
Floor Surface Preservation	● ● ● ○ ○

Dimensions



Mounting



\* For any deviation between metric and imperial spec, please refer to the metric spec.