

1109 Medium Duty/Low Profile Business Machine Caster Series



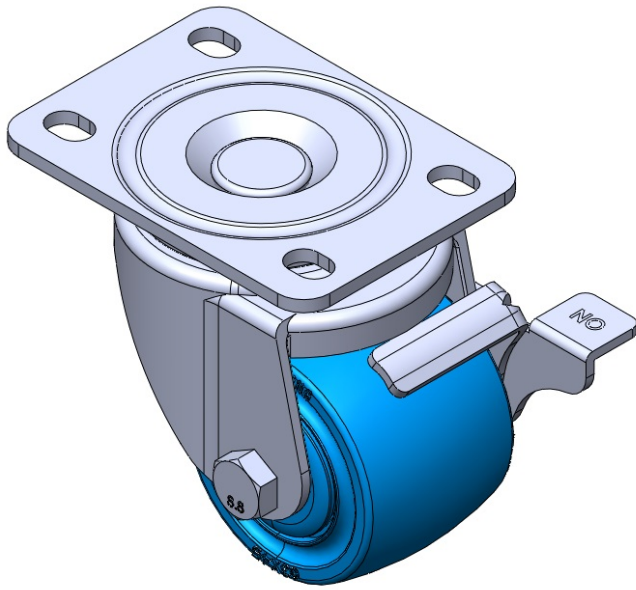
King Kong Wheel Diameter × Wheel Width 63 x 45mm

EAN  
TW-4110902054013

Casters with Side Brakes and With locking system. High-Quality, Riveted, Stamping Fork. Hole Zine-Plated, Mounting Type - Top Plate. Reinforced Polypropylene and Wheel Tread. Ball Bearing bearings.

Wheel tread: Thermoplastic  
Wheel Center: Thermoplastic

Drawings are for reference only and may differ from the product



Picture may differ from original product

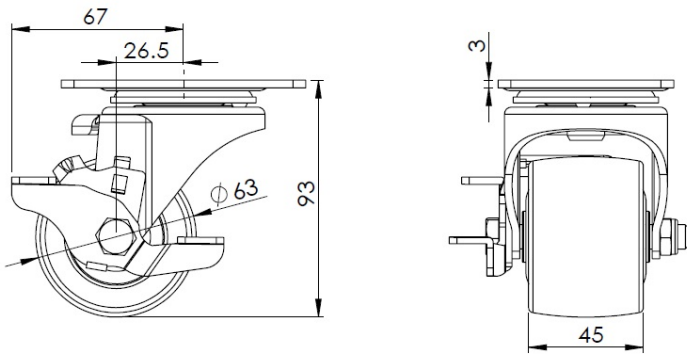
Technical Data

<input checked="" type="radio"/> Metric <input type="radio"/> Imperial	
Wheel Diameter	63mm
Wheel Width	45mm
Wheel Bearing	Wheels With Ball Bearings
Plate Size	96 x 69mm
Bolt Hole Spacing	75 x 45mm
Plate Hole	13 x 9mm
Offset	26.5mm
Swivel Interference	134mm
Overall Height	93mm
Swivel Radius	67mm
Hardness Of Tread	75±5° Shore D
Load Capacity (Dynamic)	350kgs
Load Capacity (Static)	525kgs
Temperature	-20°C to +80°C
Fork Type	Swivel Caster With Side Brake
Stainless	N/A
Electrical Conductivity	N/A
Anti-Static	N/A
Weight	0.75kgs
Standard	ISO22883

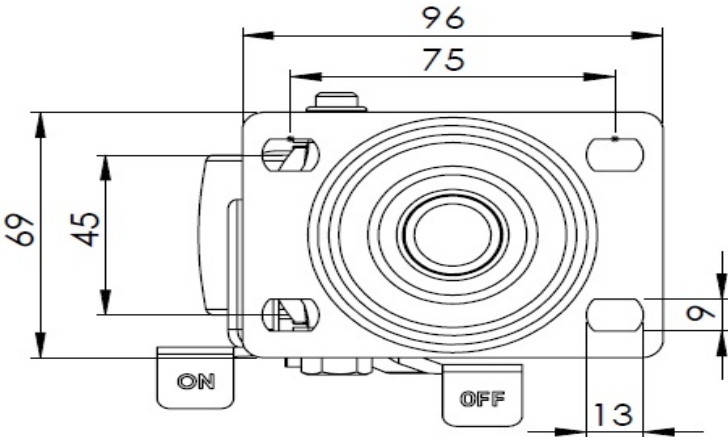
Advantages at a glance

Rolling Resistance	● ● ● ● ●
Operating Noise	● ● ○ ○ ○
Floor Surface Preservation	● ● ○ ○ ○

Dimensions



Mounting



\* For any deviation between metric and imperial spec, please refer to the metric spec.