

1109 Medium Duty/Low Profile Business Machine Caster Series



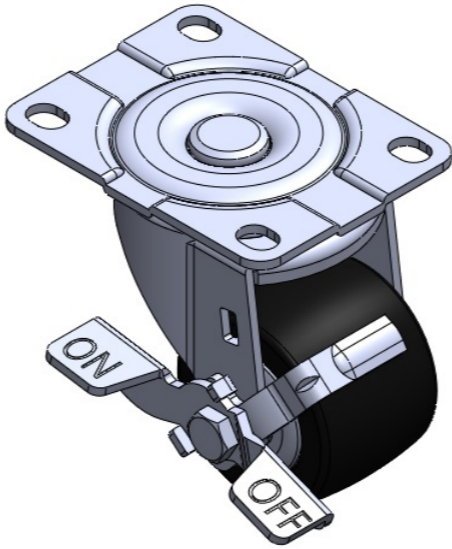
Nylon Wheel Diameter × Wheel Width 63 x 45mm

EAN
TW-4110902054014

Casters with Side Brakes and With locking system. Top Plate Riveted and Stamping. Zinc-plated surface, Mounting Type - Top Plate. Reinforced Polypropylene and Wheel Tread. Bearings—Ball Bearings.

Wheel tread: Thermoplastic
Wheel Center: Thermoplastic

Drawings are for reference only and may differ from the product



Picture may differ from original product

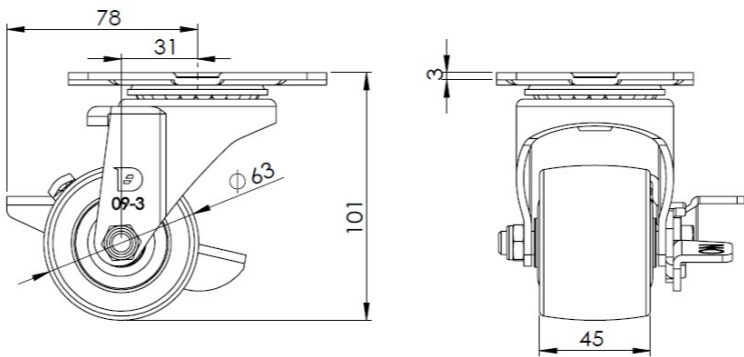
Technical Data

<input checked="" type="radio"/> Metric <input type="radio"/> Imperial	
Wheel Diameter	63mm
Wheel Width	45mm
Wheel Bearing	Wheels With Ball Bearings
Plate Size	105 x 80mm
Bolt Hole Spacing	83 x 60mm
Plate Hole	13 x 10mm
Offset	31mm
Swivel Interference	156mm
Overall Height	101mm
Swivel Radius	78mm
Hardness Of Tread	75±5° Shore D
Load Capacity (Dynamic)	250kgs
Load Capacity (Static)	375kgs
Temperature	-20°C to +80°C
Fork Type	Swivel Caster With Side Brake
Stainless	N/A
Electrical Conductivity	N/A
Anti-Static	N/A
Weight	0.75kgs
Standard	ISO22883

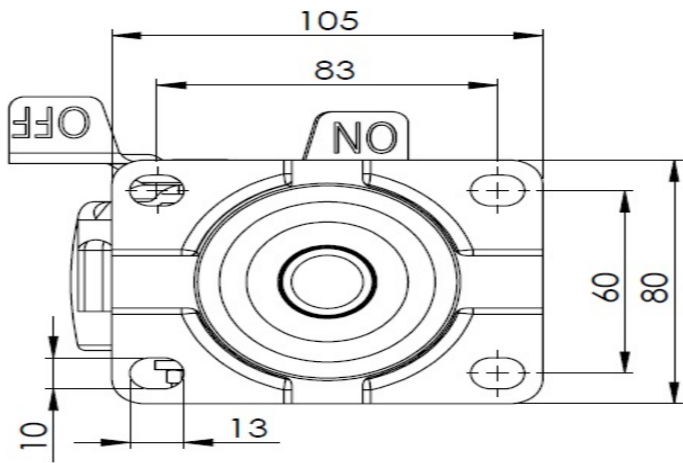
Advantages at a glance

Rolling Resistance	● ● ● ● ●
Operating Noise	● ● ○ ○ ○
Floor Surface Preservation	● ● ○ ○ ○

Dimensions



Mounting



* For any deviation between metric and imperial spec, please refer to the metric spec.