

1109 Medium Duty/Low Profile Business Machine Caster Series



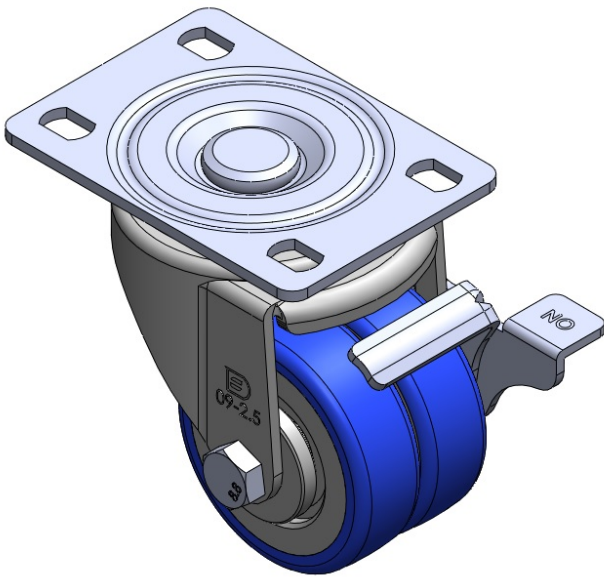
ZQPU Wheel Diameter × Wheel Width 63 x 20mm

EAN
TW-4110902054019

Equipped with Side Brakes and a With locking system for the Casters. Riveted and Stamping Top Plate legs with high-grade perforations. Zine-Plated surface, Mounting Type - Top Plate. Cast Iron Wheel Center, High Quality Polyurethane Wheel Tread. Blue Bearing—Ball Bearings.

Wheel surface: High-quality polyurethane
Wheel Center: Iron core / Cast iron core

Drawings are for reference only and may differ from the product



Picture may differ from original product

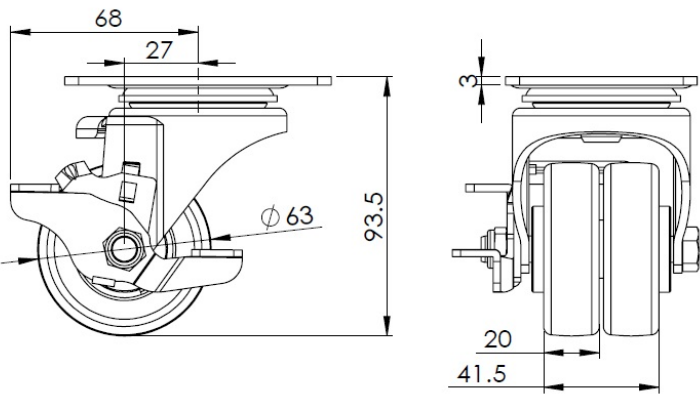
Technical Data

<input checked="" type="radio"/> Imperial <input type="radio"/> Metric	
Wheel Diameter	2-1/2 "
Wheel Width	13/16 "
Wheel Bearing	Wheels With Ball Bearings
Plate Size	3-7/8 " x 3-3/16 "
Bolt Hole Spacing	3 " x 1-13/16 "
Plate Hole	9/16 " x 23/64 "
Offset	1-1/16 "
Swivel Interference	5-7/16 "
Overall Height	3-3/4 "
Swivel Radius	2-11/16 "
Hardness Of Tread	87±5° Shore A
Load Capacity (Dynamic)	661lbs
Load Capacity (Static)	992lbs
Temperature	-4°F to +158°F
Fork Type	Swivel Caster With Side Brake
Stainless	N/A
Electrical Conductivity	N/A
Anti-Static	N/A
Weight	1.7lbs
Standard	ISO22883

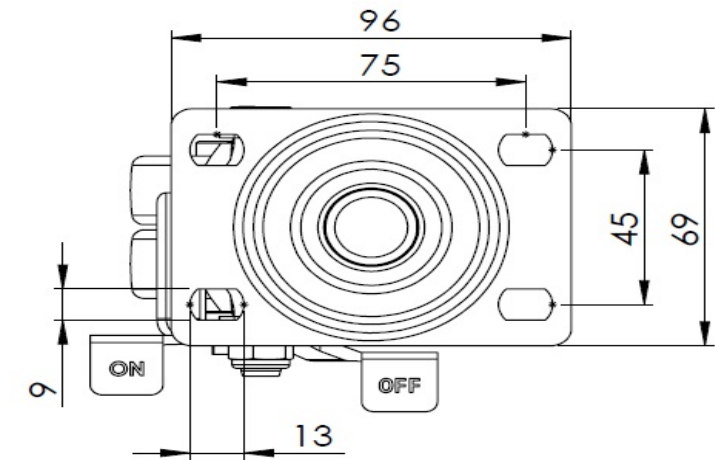
Advantages at a glance

Rolling Resistance	● ● ● ● ●
Operating Noise	● ● ● ● ●
Floor Surface Preservation	● ● ● ● ●

Dimensions



Mounting



* For any deviation between metric and imperial spec, please refer to the metric spec.