

1109 Medium Duty/Low Profile Business Machine Caster Series



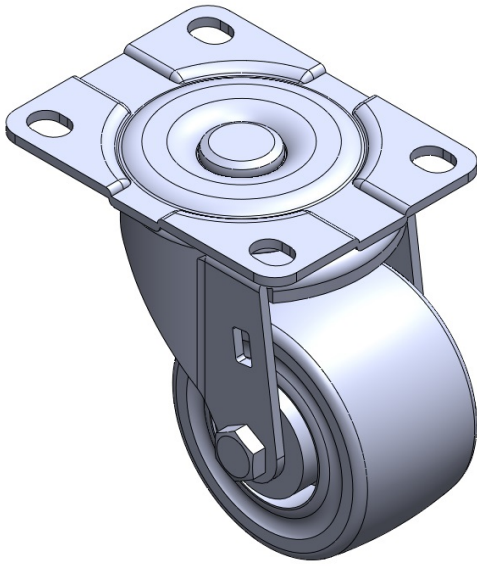
Phenolic wheel Wheel Diameter × Wheel Width 75 x 45mm

EAN
TW-4110903002009

Swivel Caster, Top Plate Riveted Stamping Fork Extended control lever surface, Mounting Type - Top Plate Wheel Tread And Wheel Center Made Of Compression Molded Phenolic Resin Filled With Macerated fabric Wheel - Plain Bearing type.

Wheel tread: Compressed synthetic resin impregnated with fabric
Wheel Center: Compressed synthetic resin impregnated with fabric

Drawings are for reference only and may differ from the product



Picture may differ from original product

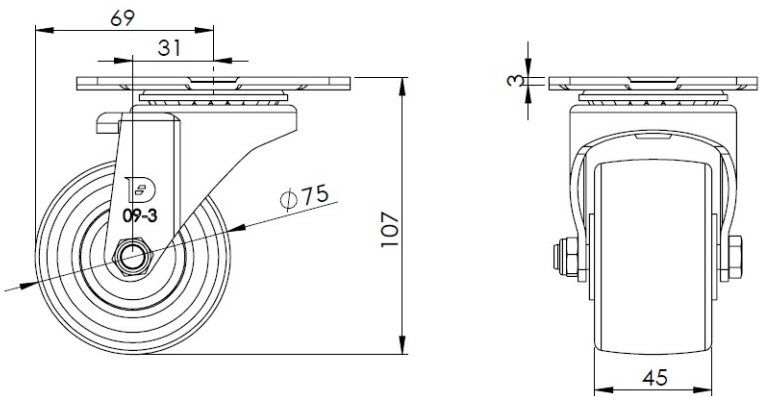
Technical Data

<input checked="" type="radio"/> Imperial <input type="radio"/> Metric	
Wheel Diameter	3 "
Wheel Width	1-13/16 "
Wheel Bearing	Wheel With Plain Bearing
Plate Size	4-3/16 " x 3-3/16 "
Bolt Hole Spacing	2-1/4 " x 2-3/8 "
Plate Hole	9/16 " x 3/8 "
Offset	1-1/4 "
Swivel Interference	5-1/2 "
Overall Height	4-1/4 "
Swivel Radius	2-3/4 "
Hardness Of Tread	80±5° Shore D
Load Capacity (Dynamic)	496lbs
Load Capacity (Static)	744lbs
Temperature	-4°F to +302°F
Fork Type	Swivel Caster
Stainless	N/A
Electrical Conductivity	N/A
Anti-Static	N/A
Weight	1.8lbs
Standard	ISO22883

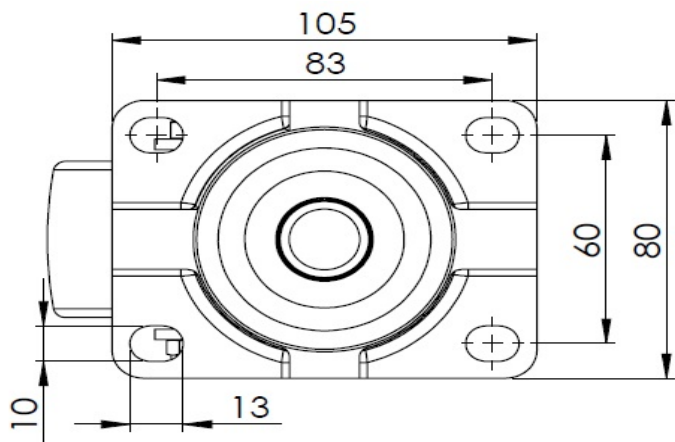
Advantages at a glance

Rolling Resistance	● ● ● ● ●
Operating Noise	● ● ○ ○ ○
Floor Surface Preservation	● ● ○ ○ ○

Dimensions



Mounting



* For any deviation between metric and imperial spec, please refer to the metric spec.