

1109 Medium Duty/Low Profile Business Machine Caster Series



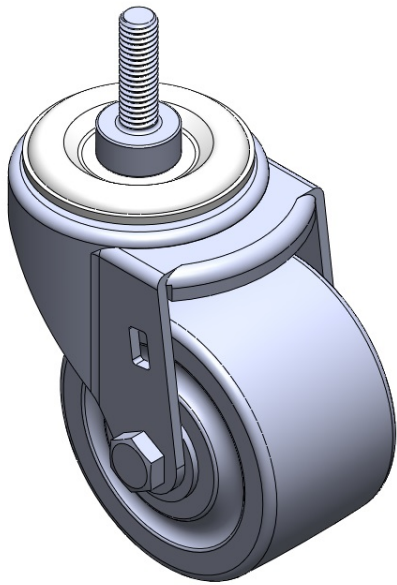
Phenolic Wheel Diameter × Wheel Width 75 x 45mm

EAN  
TW-4110903002013

Swivel Caster, Riveted Stamping Fork with 3/8"-16 thread.  
Zine-Plated, Mounting Type - Top Plate.  
Phenolic Wheel.  
Bearings—Annual Ball Bearings.

Tread: Compressed synthetic resin impregnated with fabric  
Wheel Center: Compressed synthetic resin impregnated with fabric

Drawings are for reference only and may differ from the product



Picture may differ from original product

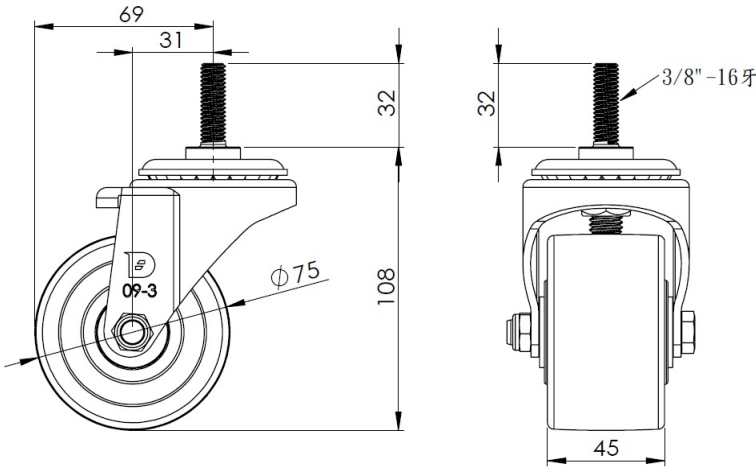
Technical Data

<input checked="" type="radio"/> Imperial <input type="radio"/> Metric	
Wheel Diameter	3 "
Wheel Width	1-13/16 "
Wheel Bearing	Wheel With Annual Ball Bearing
Threaded Stem	3/8 " -16
Threaded Size	1-5/16 "
Offset	1-1/4 "
Swivel Interference	5-1/2 "
Overall Height	4-5/16 "
Swivel Radius	2-3/4 "
Hardness Of Tread	80±5° Shore D
Load Capacity (Dynamic)	496lbs
Load Capacity (Static)	744lbs
Temperature	-4°F to +302°F
Fork Type	Swivel Caster
Stainless	N/A
Electrical Conductivity	N/A
Anti-Static	N/A
Weight	1.6lbs
Standard	ISO22883

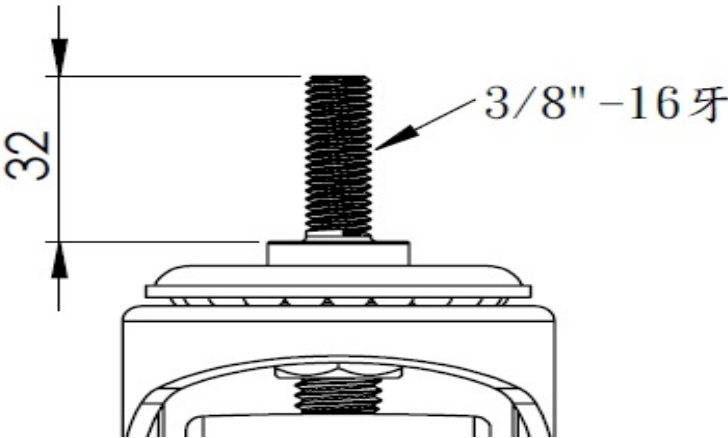
Advantages at a glance

Rolling Resistance	● ● ● ● ●
Operating Noise	● ● ○ ○ ○
Floor Surface Preservation	● ● ○ ○ ○

Dimensions



Mounting



\* For any deviation between metric and imperial spec, please refer to the metric spec.