

1109 Medium Duty/Low Profile Business Machine Caster Series



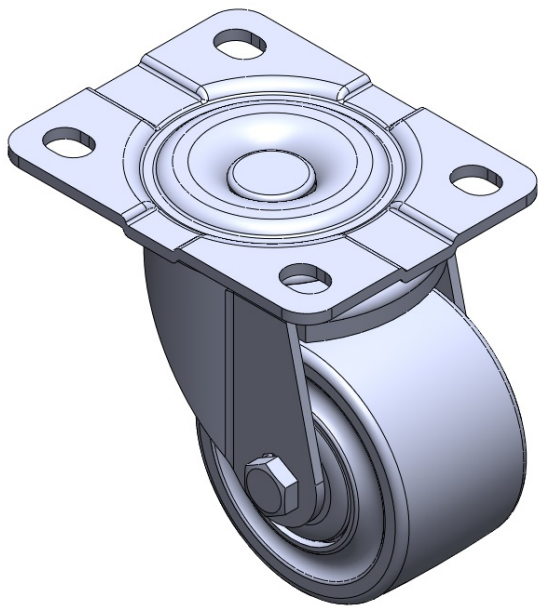
Nylon Wheel Diameter × Wheel Width 75 x 45mm

EAN
TW-4110903002020

Swivel Casters, Top Plate Riveted Stamping Fork Surface chrome-plated, Mounting Type - Top Plate Reinforced Polypropylene and Wheel Tread Bearing - Ball Bearing.

Wheel tread: Thermoplastic
Wheel Center: Thermoplastic

Drawings are for reference only and may differ from the product



Picture may differ from original product

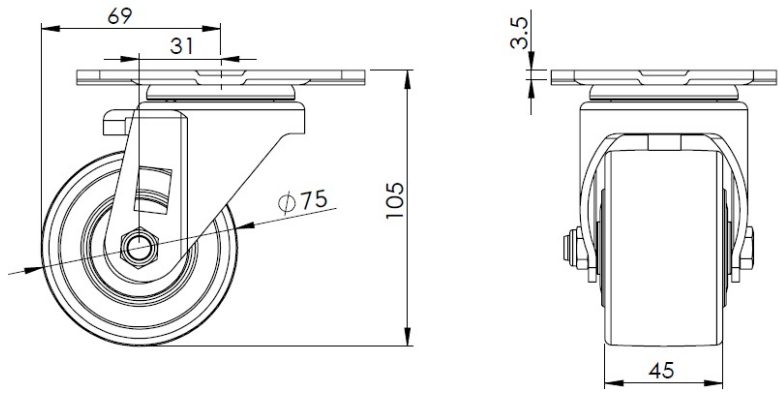
Technical Data

<input checked="" type="radio"/> Metric <input type="radio"/> Imperial	
Wheel Diameter	75mm
Wheel Width	45mm
Wheel Bearing	Wheels With Ball Bearings
Plate Size	110 x 86mm
Bolt Hole Spacing	83 x 60mm
Plate Hole	13 x 10mm
Offset	31mm
Swivel Interference	138mm
Overall Height	105mm
Swivel Radius	69mm
Hardness Of Tread	75±5° Shore D
Load Capacity (Dynamic)	300kgs
Load Capacity (Static)	450kgs
Temperature	-20°C to +80°C
Fork Type	Swivel Caster
Stainless	N/A
Electrical Conductivity	N/A
Anti-Static	N/A
Weight	0.80kgs
Standard	ISO22883

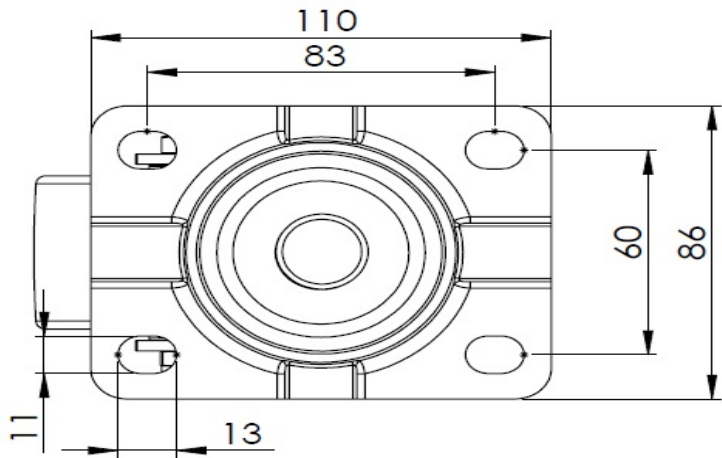
Advantages at a glance

Rolling Resistance	● ● ● ● ●
Operating Noise	● ● ○ ○ ○
Floor Surface Preservation	● ● ○ ○ ○

Dimensions



Mounting



* For any deviation between metric and imperial spec, please refer to the metric spec.