

1109 American Wheel Series

Nylon wheel Wheel diameter × wheel width 75 x 45mm

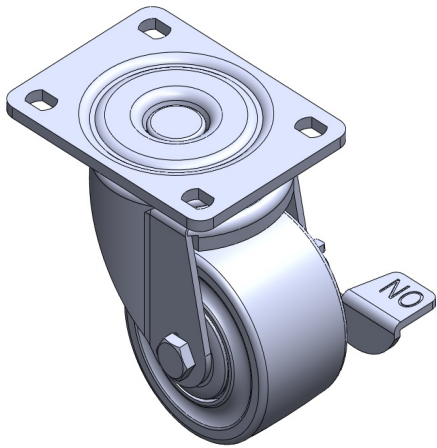
EAN

TW-4110903002025

Castors with side brakes and locking system. Base plate riveted stamped footrest
Surface galvanized, base plate mounting device
Thermoplastic plastic wheel core and wheel surface
Wheel bearings - precision ball bearings.

Wheel tread: Thermoplastic
Wheel core: Thermoplastic

Product descriptions are for reference only. The actual product shall prevail.



Picture may differ from original product

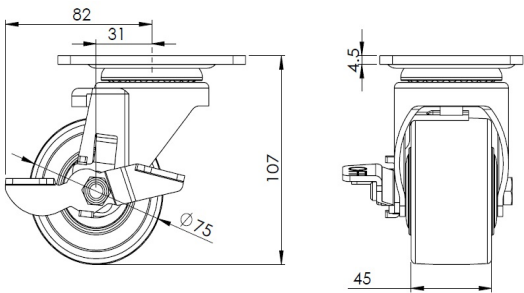
Technical Data

<input checked="" type="radio"/> Metric <input type="radio"/> Imperial	
Wheel Diameter	75mm
Wheel Width	45mm
Wheel Bearing	wheel equipped with ball bearings
Plate size	105 x 80mm
Base plate hole spacing	83 x 60mm
Plate hole	12 x 9mm
Offset	31mm
Swivel Interference	164mm
Overall height	107mm
Swivel Radius	82mm
Hardness of tread	75±5° Shore D
Load capacity (dynamic)	300kgs
Load capacity (static)	450kgs
Temperature	-20°C to +80°C
Stand Style	Single Side Strike
Stainless steel	N/A
Conductive	N/A
Anti	N/A
Weight	0.85kgs
Standard	ISO22883

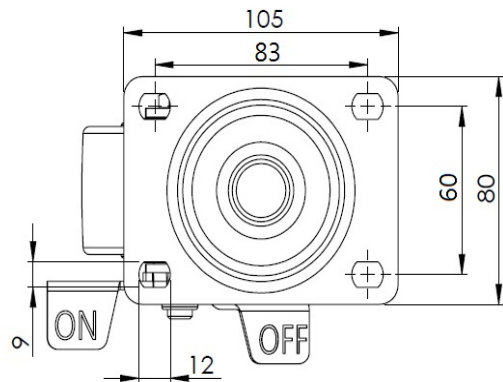
Advantages at a glance

Rolling Resistance	● ● ● ● ●
Operating Noise	● ● ○ ○ ○
Floor Surface Preservation	● ● ○ ○ ○

Dimensions



Mounting



Drawings are for reference only and may differ from the product.

* For any deviation between metric and imperial spec, please refer to the metric spec.