

1109 Medium Duty/Low Profile Business Machine Caster Series



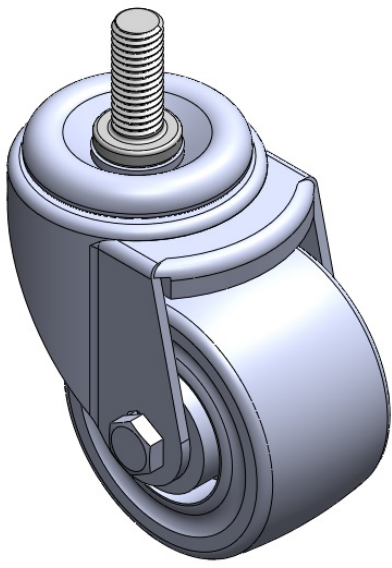
Phenolic wheel Wheel Diameter × Wheel Width 75 x 45mm

EAN  
TW-4110903002038

Swivel Caster, Riveted Stamping Fork - 1/2-12 threads  
Zine-Plated, Mounting Type - Threaded Stem  
Compressed synthetic resin core and Wheel Tread with impregnated fabric  
Bearing - Plain Bearing

Tread: Compressed synthetic resin impregnated with fabric  
Wheel Center: Compressed synthetic resin impregnated with fabric

Drawings are for reference only and may differ from the product



Picture may differ from original product

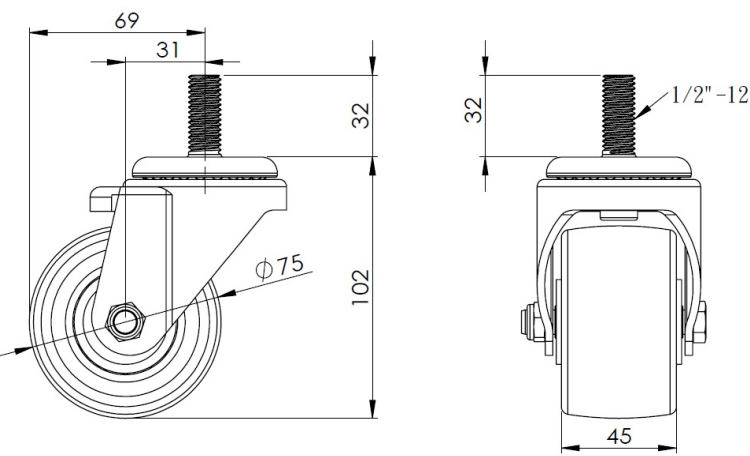
Technical Data

<input checked="" type="radio"/> Metric <input type="radio"/> Imperial	
Wheel Diameter	75mm
Wheel Width	45mm
Wheel Bearing	Wheel With Plain Bearing
Threaded Stem	1/2 " -12
Threaded Size	32mm
Offset	31mm
Swivel Interference	138mm
Overall Height	102mm
Swivel Radius	69mm
Hardness Of Tread	80±5° Shore D
Load Capacity (Dynamic)	225kgs
Load Capacity (Static)	337.5kgs
Temperature	-20°C to +150°C
Fork Type	Swivel Caster
Stainless	N/A
Electrical Conductivity	N/A
Anti-Static	N/A
Weight	0.72kgs
Standard	ISO22883

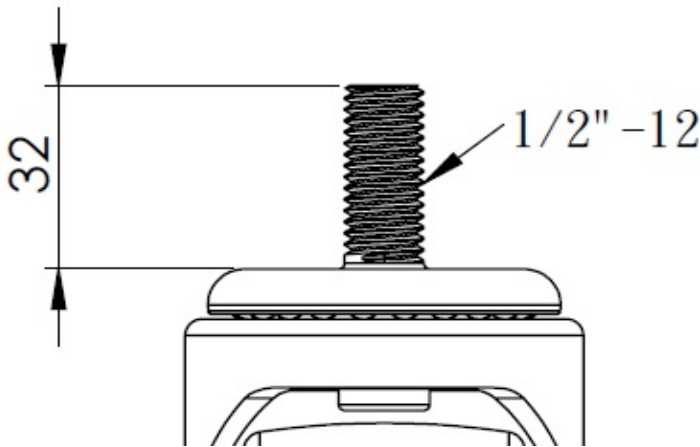
Advantages at a glance

Rolling Resistance	● ● ● ● ●
Operating Noise	● ● ○ ○ ○
Floor Surface Preservation	● ● ○ ○ ○

Dimensions



Mounting



\* For any deviation between metric and imperial spec, please refer to the metric spec.