

1109 Medium Duty/Low Profile Business Machine Caster Series



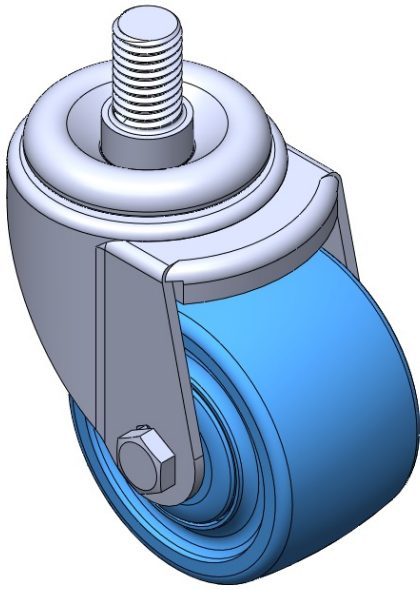
King Kong Wheel Diameter × Wheel Width 75 x 45mm

EAN  
TW-4110903002043

Swivel Caster, Riveted Stamping Fork - 5/8-11 threads  
Zine-Plated, Mounting Type - Threaded Stem  
Reinforced Polypropylene core and Wheel Tread  
Bearing - Ball Bearing

Wheel surface: Thermoplastic  
Wheel Center: thermoplastic

Drawings are for reference only and may differ from the product



Picture may differ from original product

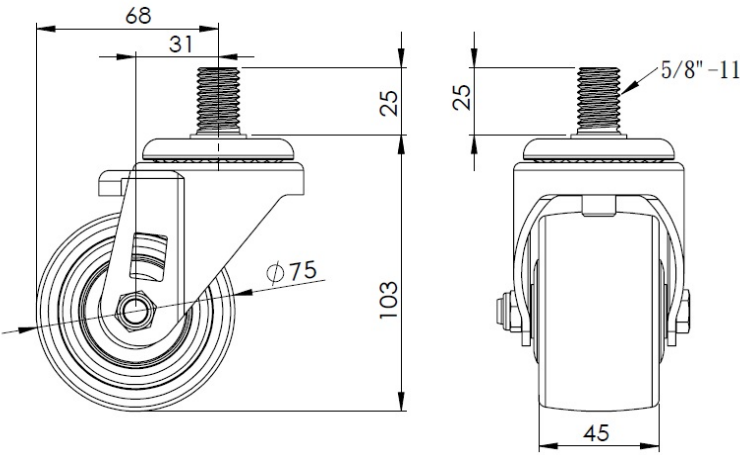
Technical Data

|  |                           |
|--|---------------------------|
| <input checked="" type="radio"/> Metric <input type="radio"/> Imperial |                           |
| Wheel Diameter   | 75mm                      |
| Wheel Width  | 45mm                      |
| Wheel Bearing  | Wheels With Ball Bearings |
| Threaded Stem  | 5/8 " -11                 |
| Threaded Size  | 25mm                      |
| Offset   | 31mm                      |
| Swivel Interference  | 138mm                     |
| Overall Height   | 103mm                     |
| Swivel Radius  | 68mm                      |
| Hardness Of Tread  | 75±5° Shore D             |
| Load Capacity (Dynamic)  | 400kgs                    |
| Load Capacity (Static)   | 600kgs                    |
| Temperature  | -20°C to +80°C            |
| Fork Type  | Swivel Caster             |
| Stainless  | N/A                       |
| Electrical Conductivity  | N/A                       |
| Anti-Static  | N/A                       |
| Weight   | 0.72kgs                   |
| Standard   | ISO22883                  |

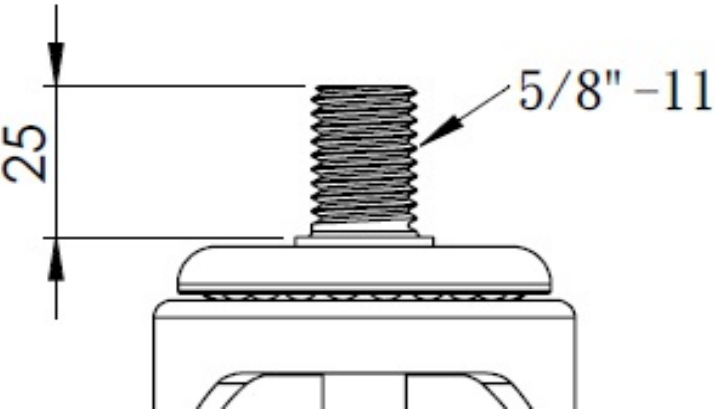
Advantages at a glance

|                            |           |
|----------------------------|-----------|
| Rolling Resistance         | ● ● ● ● ● |
| Operating Noise            | ● ● ○ ○ ○ |
| Floor Surface Preservation | ● ● ○ ○ ○ |

Dimensions



Mounting



\* For any deviation between metric and imperial spec, please refer to the metric spec.