

1109 Medium Duty/Low Profile Business Machine Caster Series



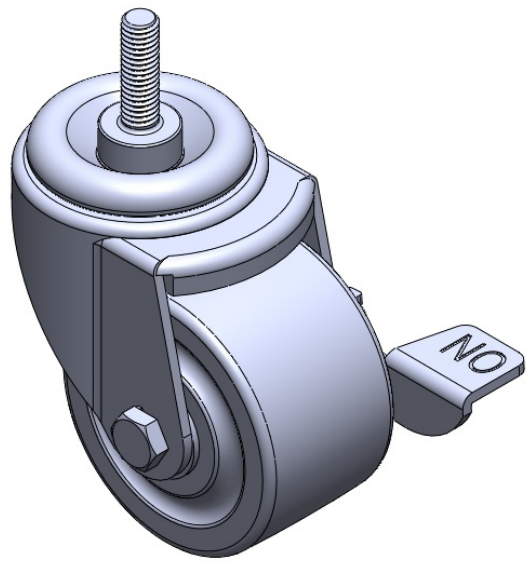
Phenolic Wheel Diameter × Wheel Width 75 x 45mm

EAN
TW-4110903004009

Casters with Side Brakes and With locking system. Threaded Stem, Riveted Stamping Fork—3/8-16"
Zine-Plated, Mounting Type - Threaded Stem
Compressed synthetic resin Wheel Center and Wheel Tread impregnated with fabric
Bearings—Annual Ball Bearings

Tread: Compressed synthetic resin impregnated with fabric
Wheel Center: Compressed synthetic resin impregnated with fabric

Drawings are for reference only and may differ from the product



Picture may differ from original product

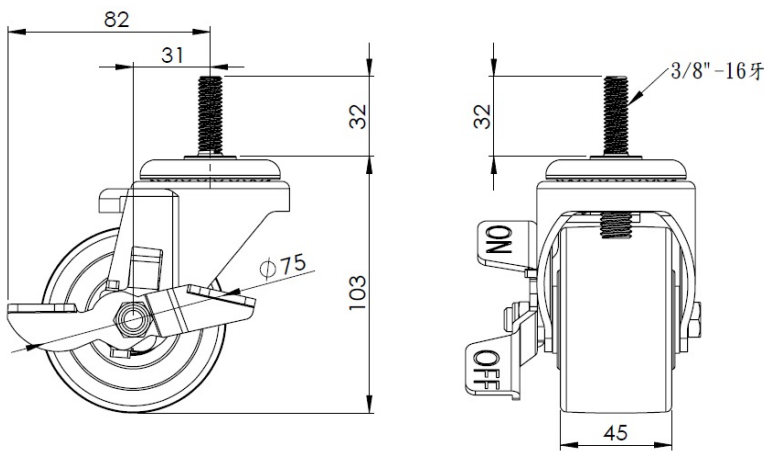
Technical Data

<input checked="" type="radio"/> Metric <input type="radio"/> Imperial	
Wheel Diameter	75mm
Wheel Width	45mm
Wheel Bearing	Wheel With Annual Ball Bearing
Threaded Stem	3/8 " -16牙
Threaded Size	32mm
Offset	31mm
Swivel Interference	164mm
Overall Height	103mm
Swivel Radius	82mm
Hardness Of Tread	80±5° Shore D
Load Capacity (Dynamic)	225kgs
Load Capacity (Static)	337.5kgs
Temperature	-20°C to +150°C
Fork Type	Swivel Caster With Side Brake
Stainless	N/A
Electrical Conductivity	N/A
Anti-Static	N/A
Weight	0.80kgs
Standard	ISO22883

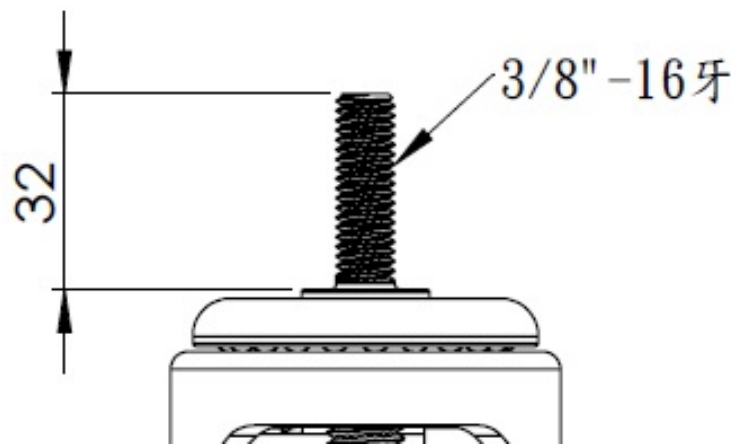
Advantages at a glance

Rolling Resistance	● ● ● ● ●
Operating Noise	● ● ○ ○ ○
Floor Surface Preservation	● ● ○ ○ ○

Dimensions



Mounting



* For any deviation between metric and imperial spec, please refer to the metric spec.