

1109 Medium Duty/Low Profile Business Machine Caster Series



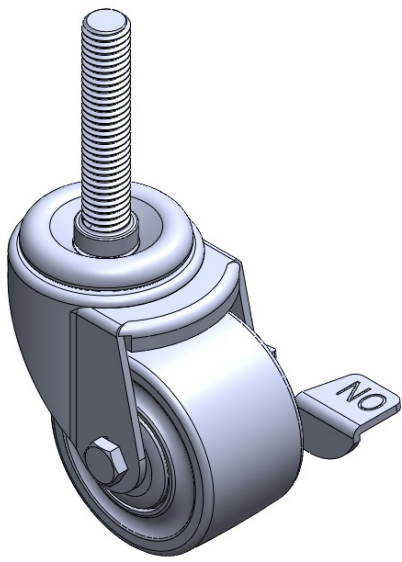
Nylon Wheel Diameter × Wheel Width 75 x 45mm

EAN
TW-4110903004011

Casters with Side Brakes and With locking system. Threaded Stem Riveted Pressed Fork – 3/4 threads.
Zine-Plated, Mounting Type - Threaded Stem.
Reinforced Polypropylene Wheel Center and Wheel Tread.
Bearing – Ball Bearing.

Wheel surface: Thermoplastic
Wheel Center: thermoplastic

Drawings are for reference only and may differ from the product



Picture may differ from original product

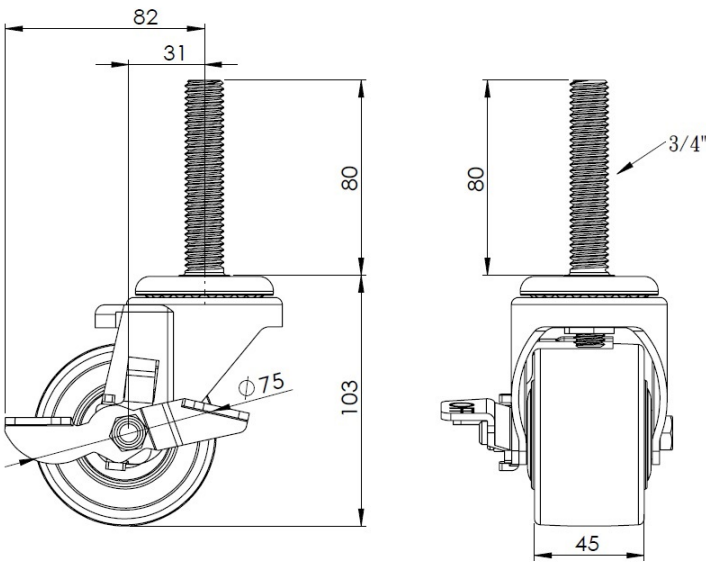
Technical Data

<input checked="" type="radio"/> Imperial <input type="radio"/> Metric	
Wheel Diameter	3 "
Wheel Width	1-13/16 "
Wheel Bearing	Wheels With Ball Bearings
Threaded Stem	3/4 " 牙
Threaded Size	3-3/16 "
Offset	1-1/4 "
Swivel Interference	6-1/2 "
Overall Height	4-1/16 " x .
Swivel Radius	3-5/16 "
Hardness Of Tread	75±5° Shore D
Load Capacity (Dynamic)	661lbs
Load Capacity (Static)	992lbs
Temperature	-4°F to +176°F
Fork Type	Swivel Caster With Side Brake
Stainless	N/A
Electrical Conductivity	N/A
Anti-Static	N/A
Weight	1.8lbs
Standard	ISO22883

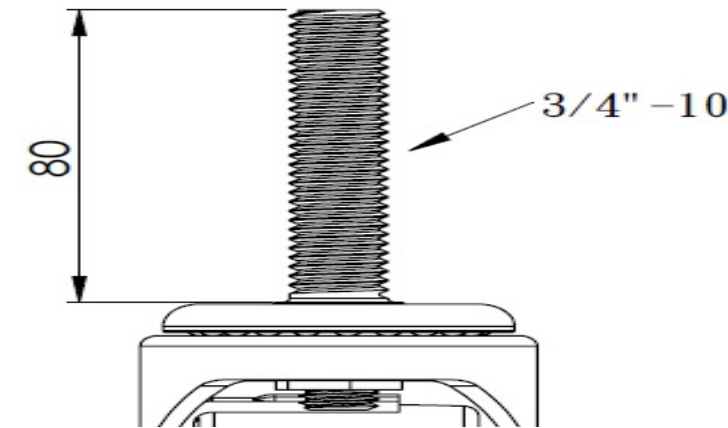
Advantages at a glance

Rolling Resistance	● ● ● ● ●
Operating Noise	● ● ○ ○ ○
Floor Surface Preservation	● ● ○ ○ ○

Dimensions



Mounting



* For any deviation between metric and imperial spec, please refer to the metric spec.