

1109 Medium Duty/Low Profile Business Machine Caster Series

ZQPU Wheel Diameter × Wheel Width 75 x 41.5mm

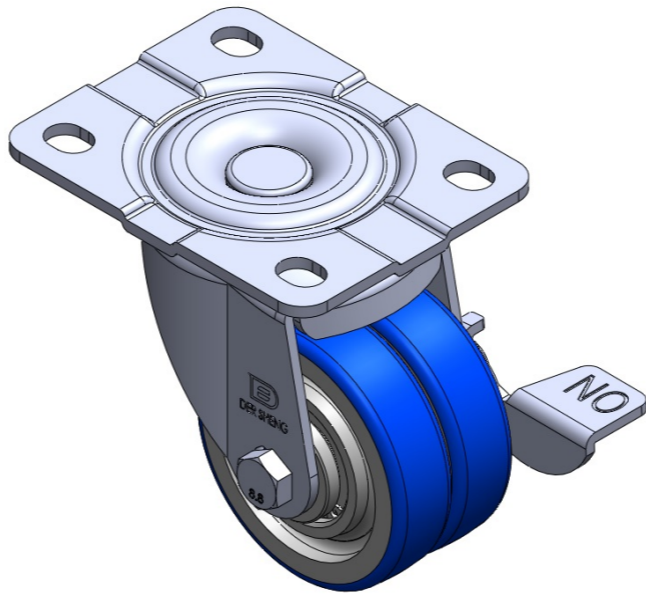
EAN

TW-4110903004022

Castors with Side Brakes and Locking system. Top Plate Riveted Stamping Fork Surface Zine-Plated, Mounting Type - Top Plate Cast Iron Wheel Center, high quality polyurethane Wheel Tread Bearing - Ball Bearing.

Wheel tread: high quality polyurethane
Wheel Center: iron core/cast iron core

Drawings are for reference only and may differ from the product



Picture may differ from original product

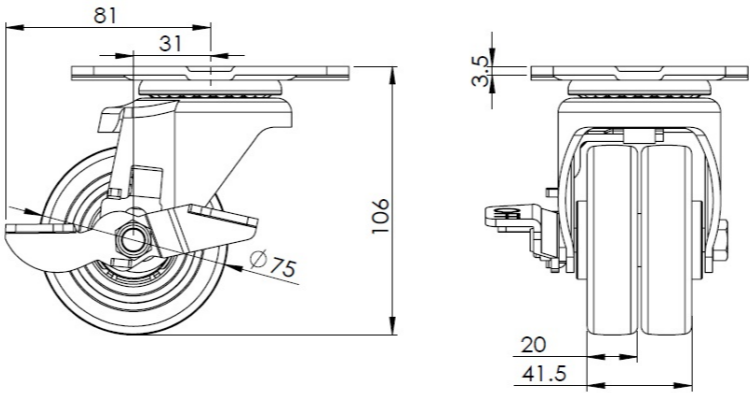
Technical Data

<input checked="" type="radio"/> Metric <input type="radio"/> Imperial	
Wheel Diameter	75mm
Wheel Width	41.5mm
Wheel Bearing	Wheels With Ball Bearings
Plate Size	110 x 86mm
Bolt Hole Spacing	83 x 60mm
Plate Hole	14 x 11mm
Offset	31mm
Swivel Interference	162mm
Overall Height	106mm
Swivel Radius	81mm
Hardness Of Tread	87±5° Shore A
Load Capacity (Dynamic)	300kgs
Load Capacity (Static)	450kgs
Temperature	-20°C to +70°C
Fork Type	Swivel Caster With Side Brake
Stainless	N/A
Electrical Conductivity	N/A
Anti-Static	N/A
Weight	0.95kgs
Standard	ISO22883

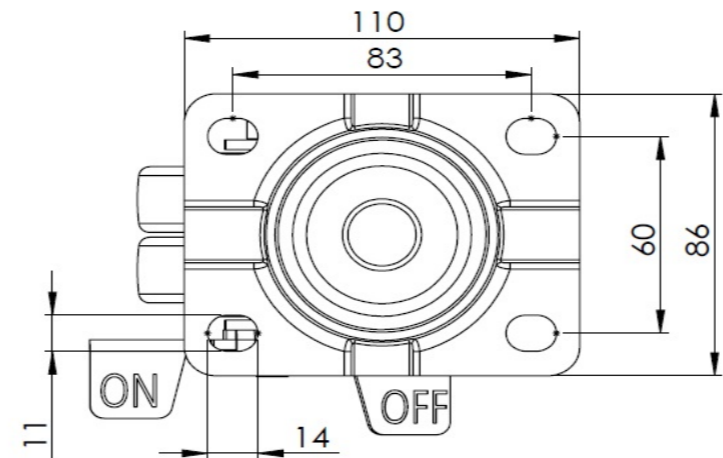
Advantages at a glance

Rolling Resistance	● ● ● ● ●
Operating Noise	● ● ● ● ●
Floor Surface Preservation	● ● ● ● ●

Dimensions



Mounting



* For any deviation between metric and imperial spec, please refer to the metric spec.