

1109 Medium Duty/Low Profile Business Machine Caster Series



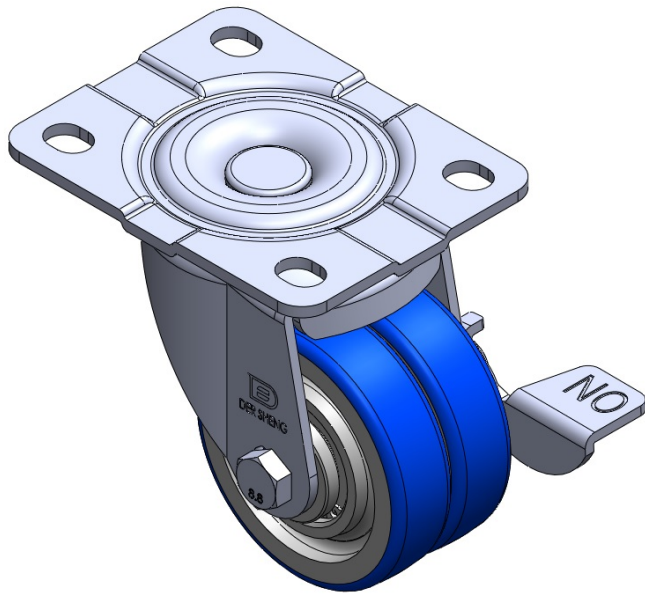
ZQPU Wheel Diameter × Wheel Width 75 x 41.5mm

EAN
TW-4110903004022

Castors with Side Brakes and Locking system. Top Plate Riveted Stamping Fork Surface Zine-Plated, Mounting Type - Top Plate Cast Iron Wheel Center, high quality polyurethane Wheel Tread Bearing - Ball Bearing.

Wheel tread: high quality polyurethane
Wheel Center: iron core/cast iron core

Drawings are for reference only and may differ from the product



Picture may differ from original product

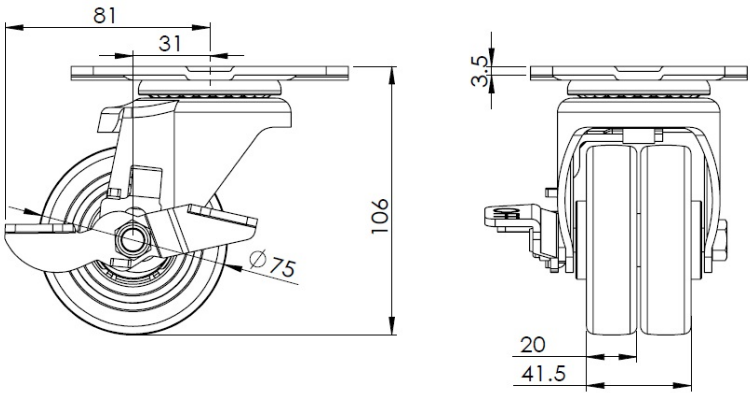
Technical Data

<input checked="" type="radio"/> Imperial <input type="radio"/> Metric	
Wheel Diameter	3 "
Wheel Width	1-11/16
Wheel Bearing	Wheels With Ball Bearings
Plate Size	4-3/8 " x 3-7/16 "
Bolt Hole Spacing	2-1/4 " x 2-3/8 "
Plate Hole	9/16 " x 3/8 "
Offset	1-1/4 "
Swivel Interference	6-1/2 "
Overall Height	4-1/4 " x .
Swivel Radius	3-1/4 "
Hardness Of Tread	87±5° Shore A
Load Capacity (Dynamic)	661lbs
Load Capacity (Static)	992lbs
Temperature	-4°F to +158°F
Fork Type	Swivel Caster With Side Brake
Stainless	N/A
Electrical Conductivity	N/A
Anti-Static	N/A
Weight	2.1lbs
Standard	ISO22883

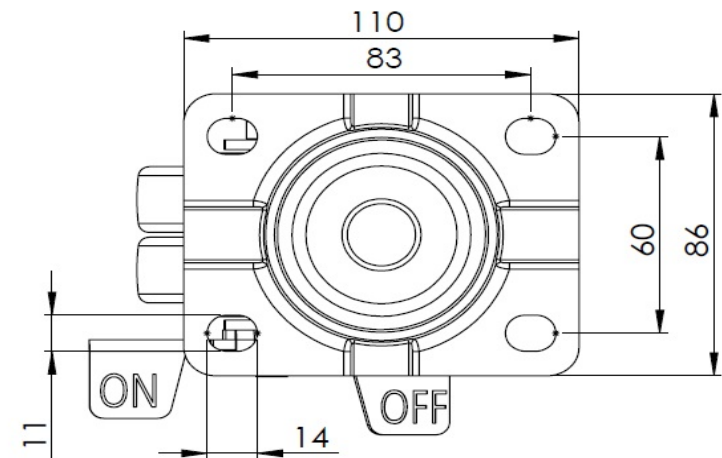
Advantages at a glance

Rolling Resistance	● ● ● ● ●
Operating Noise	● ● ● ● ●
Floor Surface Preservation	● ● ● ● ●

Dimensions



Mounting



* For any deviation between metric and imperial spec, please refer to the metric spec.