

1109 Medium Duty/Low Profile Business Machine Caster Series



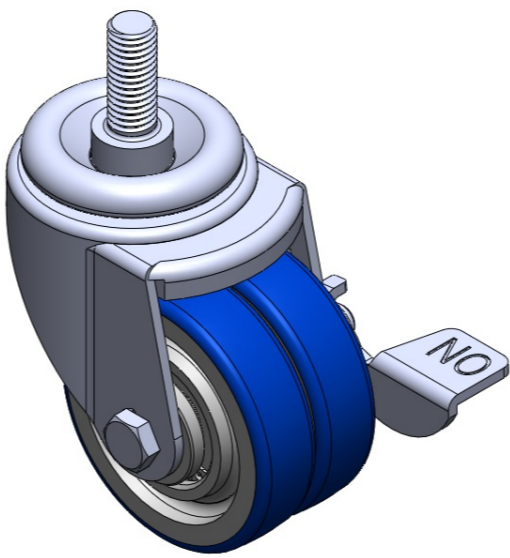
ZQPU Wheel Diameter × Wheel Width 75 x 41.5mm

EAN
TW-4110903004029

Casters with Side Brakes and With locking system. Threaded Stem Riveted Pressed Fork – 1/2"-12 UNC's.
Zine-Plated, Mounting Type - Threaded Stem.
Cast Iron core, High Quality Polyurethane Wheel Tread.
Blue color. Bearings – Ball Bearings.

Wheel tread: high quality polyurethane
Wheel Center: iron core/cast iron core

Drawings are for reference only and may differ from the product



Picture may differ from original product

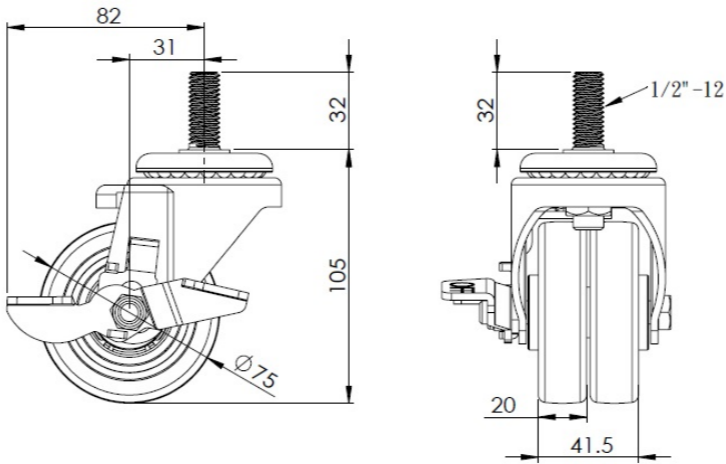
Technical Data

<input checked="" type="radio"/> Metric <input type="radio"/> Imperial	
Wheel Diameter	75mm
Wheel Width	41.5mm
Wheel Bearing	Wheel With Plain Bearing
Threaded Stem	1/2 " -12牙
Threaded Size	32mm
Offset	31mm
Swivel Interference	164mm
Overall Height	105mm
Swivel Radius	82mm
Hardness Of Tread	87±5° Shore A
Load Capacity (Dynamic)	400kgs
Load Capacity (Static)	600kgs
Temperature	-20°C to +70°C
Fork Type	Swivel Caster With Side Brake
Stainless	N/A
Electrical Conductivity	N/A
Anti-Static	N/A
Weight	0.90kgs
Standard	ISO22883

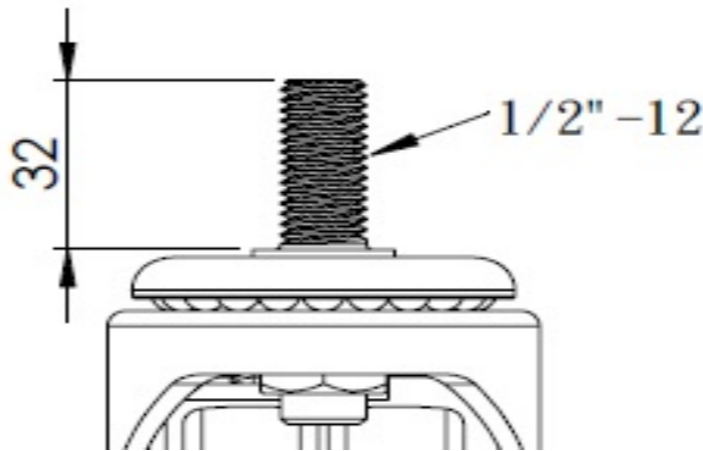
Advantages at a glance

Rolling Resistance	● ● ● ● ●
Operating Noise	● ● ● ● ●
Floor Surface Preservation	● ● ● ● ●

Dimensions



Mounting



* For any deviation between metric and imperial spec, please refer to the metric spec.