



1112 2" Wide General Purposes Caster Series

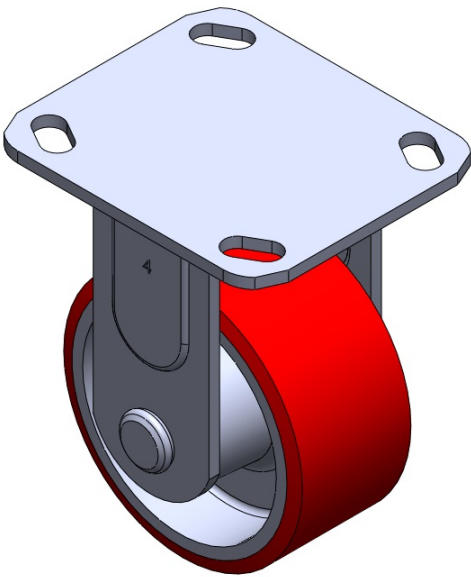
PU (red) Wheel Diameter × Wheel Width 101 x 50.6mm

EAN
TW-4111204001020

Rigid castor, Welded Caster Fork Extended control lever surface, Top Plate Mounting Type
Cast Iron Wheel Center, high quality polyurethane wheel tread Iron red, Bearing - Annual
Ball Bearing.

Wheel tread: high quality polyurethane
Wheel Center: iron core/cast iron core

Drawings are for reference only and may differ from the product



Picture may differ from original product

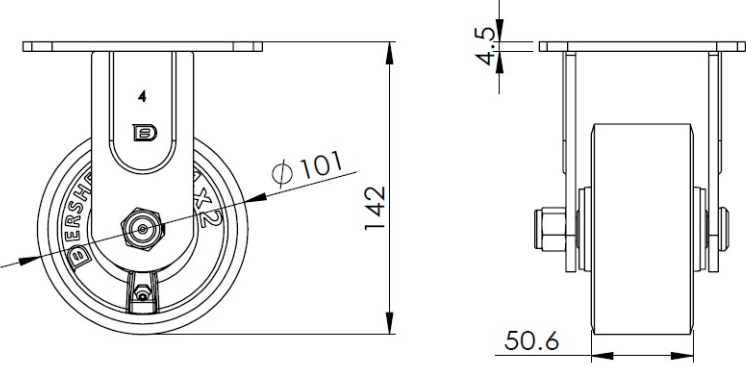
Technical Data

<input checked="" type="radio"/> Imperial <input type="radio"/> Metric	
Wheel Diameter	4 "
Wheel Width	2 "
Wheel Bearing	Wheel With Annual Ball Bearing
Plate Size	4-9/16 " x 4 "
Bolt Hole Spacing	3-3/8 " x 2-3/4 "
Plate Hole	13/16 " x 3/8 "
Offset	2-3/16 "
Swivel Interference	10-3/8 "
Overall Height	5-5/8 "
Swivel Radius	2-7/16 "
Hardness Of Tread	93±5° Shore A
Load Capacity (Dynamic)	595lbs
Load Capacity (Static)	893lbs
Temperature	-4°F to +158°F
Fork Type	Rigid Caster
Stainless	N/A
Electrical Conductivity	N/A
Anti-Static	N/A
Weight	4.4lbs
Standard	ISO22883

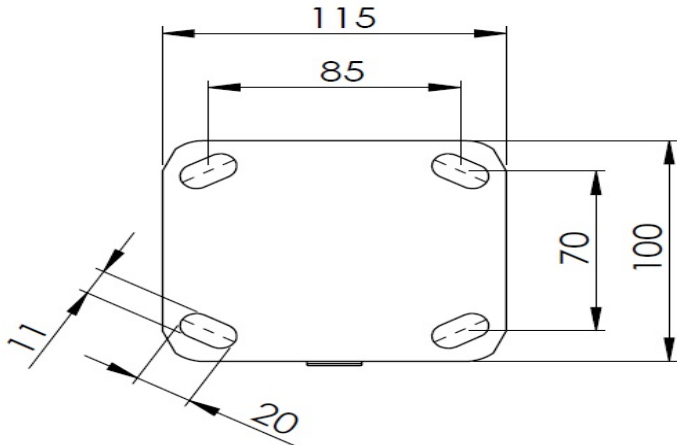
Advantages at a glance

Rolling Resistance	● ● ● ○ ○
Operating Noise	● ● ● ● ○
Floor Surface Preservation	● ● ● ● ○

Dimensions



Mounting



* For any deviation between metric and imperial spec, please refer to the metric spec.