

1112 Long Bead Series

PU wheel (green) wheel diameter × wheel width 101 x 50.6mm

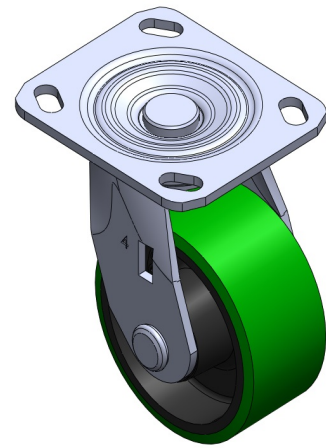
EAN

TW-4111204002026

Swivel caster with welded steel frame  
Galvanized finish, baseplate mounting  
Cast iron core with high-quality polyurethane tread  
Milled green, wheel bearings—precision long ball bearings.

Wheel tread: high quality polyurethane  
Wheel core: iron core/cast iron core

Product descriptions are for reference only. The actual product shall prevail.



Picture may differ from original product

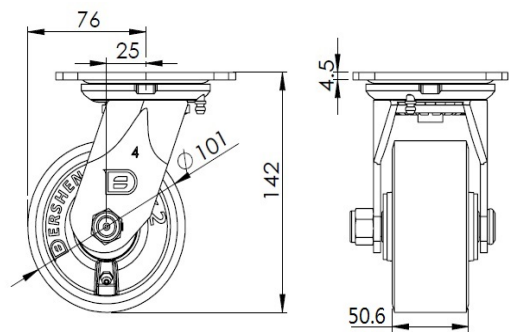
Technical Data

<input checked="" type="radio"/> Metric <input type="radio"/> Imperial	
Wheel Diameter	101mm
Wheel Width	50.6mm
Wheel Bearing	Wheel equipped with precision, long-ball
Plate size	115 x 100mm
Base plate hole spacing	85 x 70mm
Plate hole	20 x 11mm
Offset	25mm
Swivel Interference	152mm
Overall height	142mm
Swivel Radius	76mm
Hardness of tread	93±5° Shore A
Load capacity (dynamic)	270kgs
Load capacity (static)	405kgs
Temperature	-20°C to +70°C
Stand Style	activity
Stainless steel	N/A
Conductive	N/A
Anti	N/A
Weight	2.20kgs
Standard	ISO22883

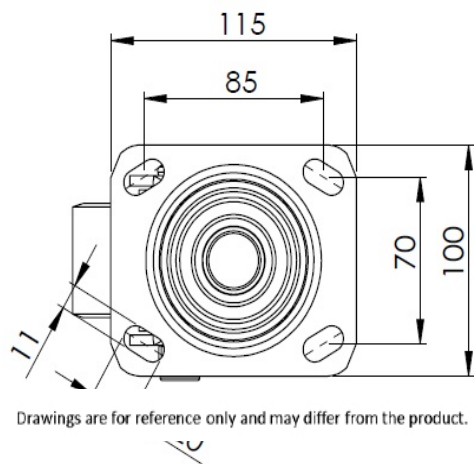
Advantages at a glance

Rolling Resistance	● ● ● ○ ○
Operating Noise	● ● ● ● ○
Floor Surface Preservation	● ● ● ● ○

Dimensions



Mounting



Drawings are for reference only and may differ from the product.

\* For any deviation between metric and imperial spec, please refer to the metric spec.