



1112 2" Wide General Purposes Caster Series

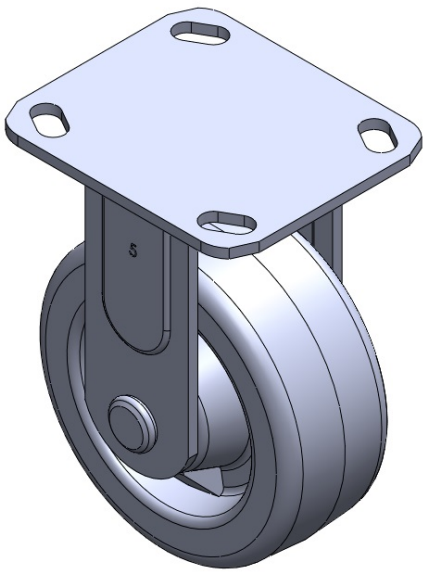
Phenolic (black) Wheel Diameter × Wheel Width 125 x 50mm

EAN
TW-4111205001003

Rigid castor, Welded Caster Fork Surface Zine-Plated, Top Plate Mounting Type
Compressed synthetic resin Wheel Center and Wheel Tread with impregnated fabric Black,
Bearing - Annual Ball Bearing.

Tread: Compressed synthetic resin impregnated with fabric
Wheel Center: Compressed synthetic resin impregnated with fabric

Drawings are for reference only and may differ from the product



Picture may differ from original product

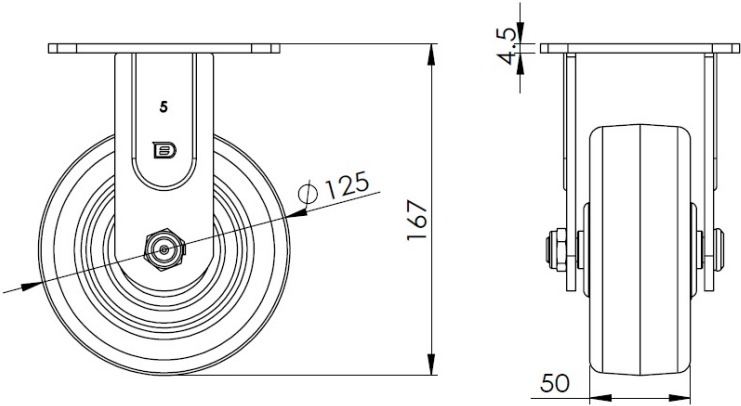
Technical Data

<input checked="" type="radio"/> Metric <input type="radio"/> Imperial	
Wheel Diameter	125mm
Wheel Width	50mm
Wheel Bearing	Wheel With Annual Ball Bearing
Plate Size	115 x 100mm
Bolt Hole Spacing	85 x 70mm
Plate Hole	20 x 11mm
Overall Height	167mm
Hardness Of Tread	80±5° Shore D
Load Capacity (Dynamic)	400kgs
Load Capacity (Static)	600kgs
Temperature	-20°C to +150°C
Fork Type	Rigid Caster
Stainless	N/A
Electrical Conductivity	N/A
Anti-Static	N/A
Weight	1.75kgs
Standard	ISO22883

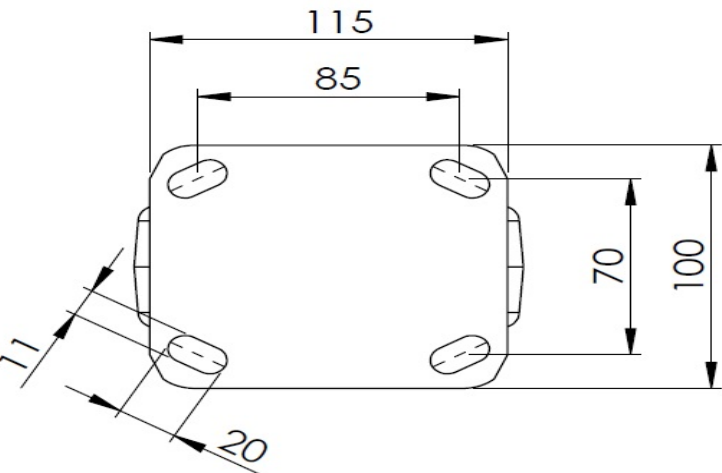
Advantages at a glance

Rolling Resistance	● ● ● ● ●
Operating Noise	● ● ○ ○ ○
Floor Surface Preservation	● ● ○ ○ ○

Dimensions



Mounting



* For any deviation between metric and imperial spec, please refer to the metric spec.