

1112 Long Bead Series



PU wheel (black) wheel diameter × wheel width 125 x 40mm

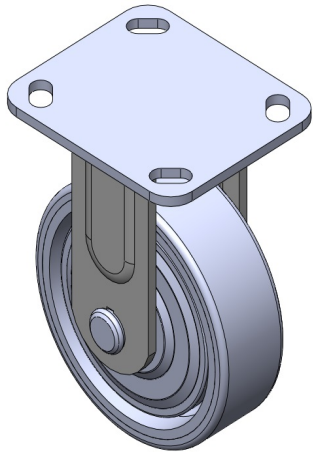
EAN

TW-4111205001008

Fixed castor, welded steel frame  
Galvanized surface, base plate mounting device (with iron cover)  
Cast iron wheel core, high-quality polyurethane wheel surface  
Black, wheel bearing - precision ball.

Wheel tread: high quality polyurethane  
Wheel core: iron core/cast iron core

Product descriptions are for reference only. The actual product shall prevail.



Picture may differ from original product

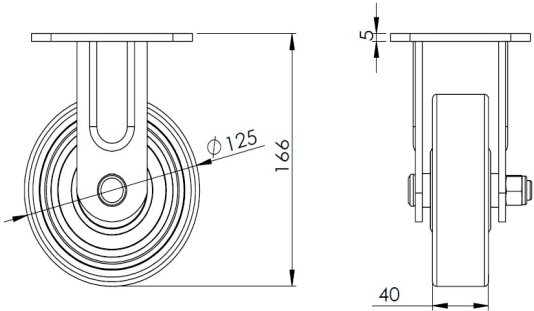
Technical Data

|  |                                   |
|--|-----------------------------------|
| <input checked="" type="radio"/> Metric <input type="radio"/> Imperial |                                   |
| Wheel Diameter   | 125mm                             |
| Wheel Width  | 40mm                              |
| Wheel Bearing  | wheel equipped with ball bearings |
| Plate size   | 115 x 100mm                       |
| Base plate hole spacing  | 85 x 70mm                         |
| Plate hole   | 20 x 11mm                         |
| Overall height   | 166mm                             |
| Hardness of tread  | 93±5° Shore A                     |
| Load capacity (dynamic)  | 360kgs                            |
| Load capacity (static)   | 540kgs                            |
| Temperature  | -20°C to +70°C                    |
| Stand Style  | fixed                             |
| Stainless steel  | N/A                               |
| Conductive   | N/A                               |
| Anti   | N/A                               |
| Weight   | 2.30kgs                           |
| Standard   | ISO22883                          |

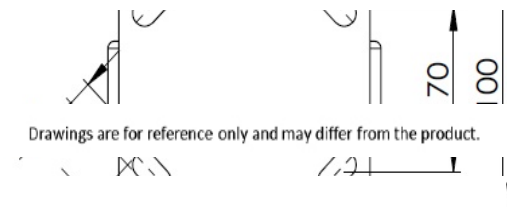
Advantages at a glance

|                            |           |
|----------------------------|-----------|
| Rolling Resistance         | ● ● ● ○ ○ |
| Operating Noise            | ● ● ● ● ○ |
| Floor Surface Preservation | ● ● ● ● ○ |

Dimensions



Mounting



\* For any deviation between metric and imperial spec, please refer to the metric spec.