

1112 2" Wide General Purposes Caster Series

PPU (red) Wheel Diameter × Wheel Width 127 x 50mm

EAN

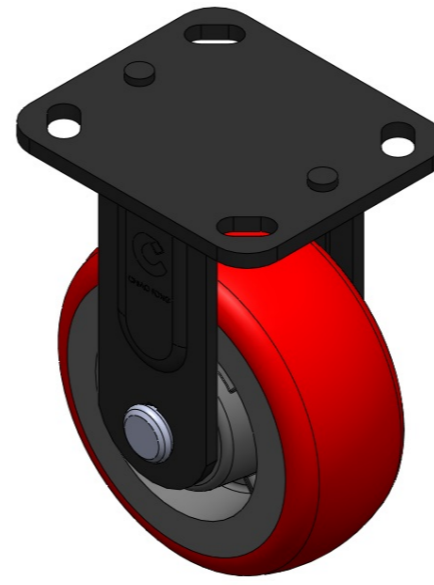
TW-4111205001022

Rigid castor, Welded Caster Fork Surface electroplating, Mounting Type - Top Plate High-quality Impact Resistance Polypropylene Wheel Center, High-Quality Thermoplastic Polyurethanes (TPU) wheel tread Red, Bearing - Ball Bearing.

Wheel Tread: high quality thermoplastic rubber polyurethane (TPU)

Wheel Center: Made of high-quality impact-resistant polypropylene

Drawings are for reference only and may differ from the product



Picture may differ from original product

Technical Data

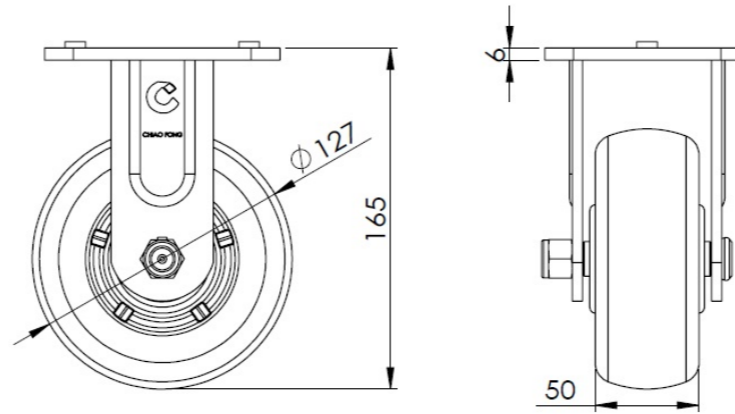
Imperial Metric

Wheel Diameter	5-1/16 "
Wheel Width	2 "
Wheel Bearing	Wheels With Ball Bearings
Plate Size	4-9/16 " x 4 "
Bolt Hole Spacing	3-3/8 " x 2-3/4 "
Plate Hole	13/16 " x 3/8 "
Overall Height	6-1/2 "
Hardness Of Tread	94±5° Shore A
Load Capacity (Dynamic)	551lbs
Load Capacity (Static)	827lbs
Temperature	-4°F to +158°F
Fork Type	Rigid Caster
Stainless	N/A
Electrical Conductivity	N/A
Anti-Static	N/A
Weight	4.0lbs
Standard	ISO22883

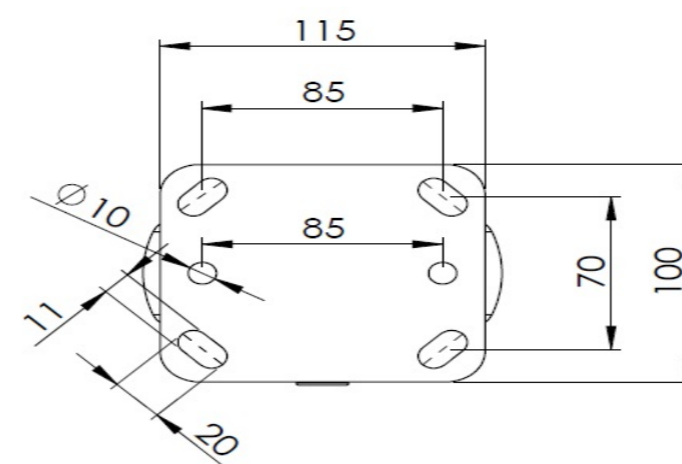
Advantages at a glance

Rolling Resistance	● ● ● ● ○
Operating Noise	● ● ● ● ○
Floor Surface Preservation	● ● ● ● ○

Dimensions



Mounting



* For any deviation between metric and imperial spec, please refer to the metric spec.