

1112 Long Bead Series

PPR wheel diameter × wheel width 126 x 50mm

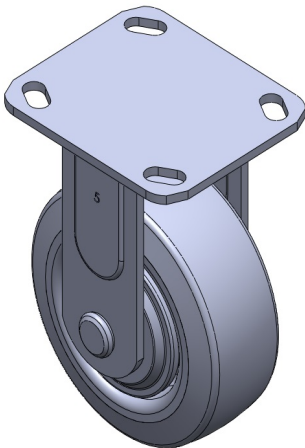
EAN

TW-4111205001031

Fixed caster with welded steel frame
Galvanized finish, baseplate mounting (with steel cover)
Impact-resistant polypropylene wheel core with thermoplastic elastomer (TPR) tread
Dark gray, wheel bearings—precision ball bearings.

Wheel tread: Thermoplastic rubber elastomer (TPR)
Wheel core: Made of high-quality impact-resistant polypropylene

Product descriptions are for reference only. The actual product shall prevail.



Picture may differ from original product

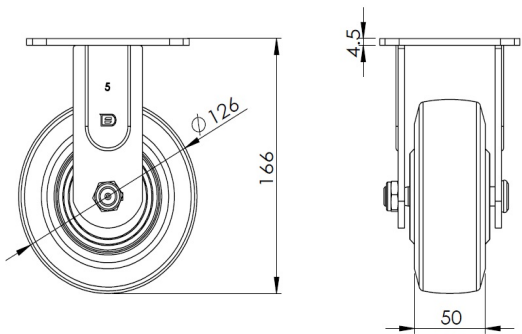
Technical Data

<input checked="" type="radio"/> Metric <input type="radio"/> Imperial	
Wheel Diameter	126mm
Wheel Width	50mm
Wheel Bearing	wheel equipped with ball bearings
Plate size	115 x 100mm
Base plate hole spacing	84mm
Plate hole	20 x 11mm
Overall height	166mm
Hardness of tread	82±5° Shore A
Load capacity (dynamic)	180kgs
Load capacity (static)	270kgs
Temperature	-20°C to +60°C
Stand Style	fixed
Stainless steel	N/A
Conductive	N/A
Anti	N/A
Weight	1.75kgs
Standard	ISO22883

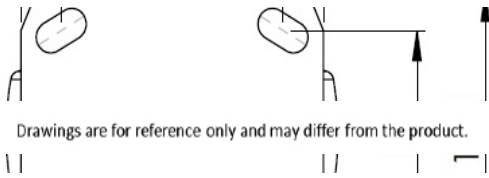
Advantages at a glance

Rolling Resistance	● ● ● ● ○
Operating Noise	● ● ● ● ○
Floor Surface Preservation	● ● ● ● ●

Dimensions



Mounting



Drawings are for reference only and may differ from the product.

* For any deviation between metric and imperial spec, please refer to the metric spec.

© All rights reserved 2025 Deshang Shanghaolun www.dersheng.com

