



1112 2" Wide General Purposes Caster Series

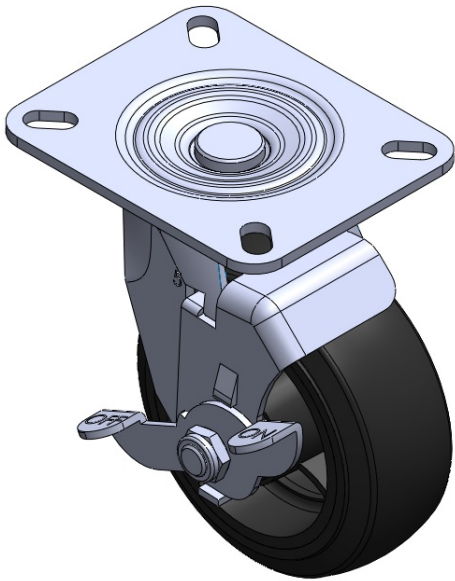
Rubber (black) Wheel Diameter × Wheel Width 125 x 50.6mm

EAN
TW-4111205004037

Casters with Side Brakes and With locking system. Welded Caster Fork Zine-Plated, Mounting Type - Top Plate Cast Iron Wheel Center with High-Quality Resilient Rubber Wheel Tread Black finish, Bearing—Annual Ball Bearings.

Wheel surface: high-quality elastic rubber
Wheel Center: iron core/cast iron core

Drawings are for reference only and may differ from the product



Picture may differ from original product

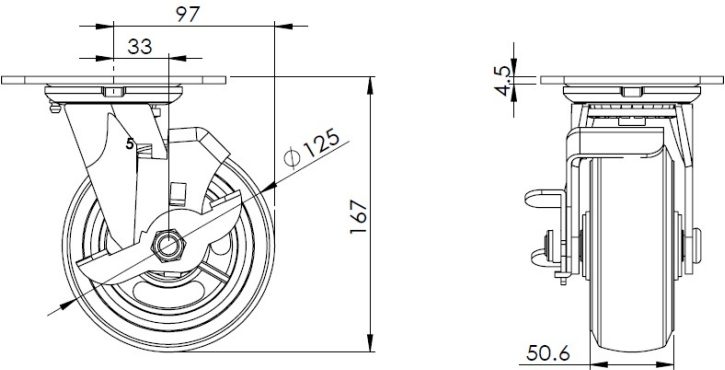
Technical Data

<input checked="" type="radio"/> Metric <input type="radio"/> Imperial	
Wheel Diameter	125mm
Wheel Width	50.6mm
Wheel Bearing	Wheel With Annual Ball Bearing
Plate Size	135 x 110mm
Bolt Hole Spacing	105 x 78mm
Plate Hole	20 x 11mm
Offset	33mm
Swivel Interference	194mm
Overall Height	167mm
Swivel Radius	97mm
Hardness Of Tread	80±5° Shore A
Load Capacity (Dynamic)	200kgs
Load Capacity (Static)	400kgs
Temperature	-20°C to +120°C
Fork Type	Swivel Caster With Side Brake
Stainless	N/A
Electrical Conductivity	N/A
Anti-Static	N/A
Weight	2.70kgs
Standard	ISO22883

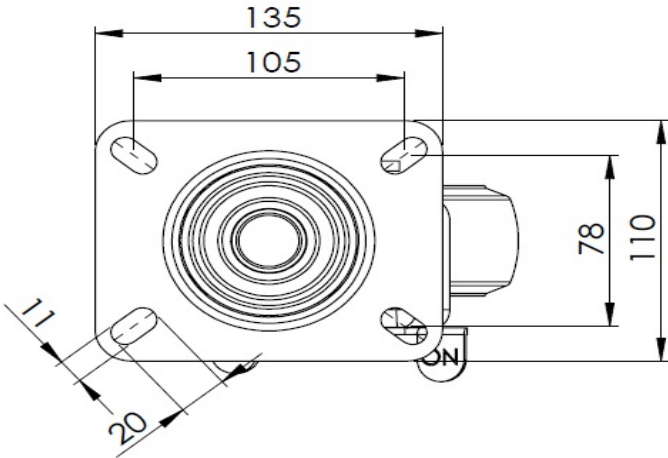
Advantages at a glance

Rolling Resistance	● ● ● ○ ○
Operating Noise	● ● ● ● ○
Floor Surface Preservation	● ● ● ● ○

Dimensions



Mounting



* For any deviation between metric and imperial spec, please refer to the metric spec.