



1112 2" Wide General Purposes Caster Series

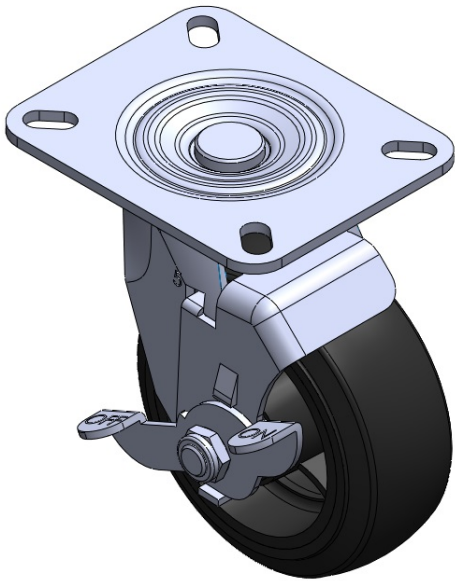
Rubber (black) Wheel Diameter × Wheel Width 125 x 50.6mm

EAN  
TW-4111205004037

Casters with Side Brakes and With locking system. Welded Caster Fork Zine-Plated, Mounting Type - Top Plate Cast Iron Wheel Center with High-Quality Resilient Rubber Wheel Tread Black finish, Bearing—Annual Ball Bearings.

Wheel surface: high-quality elastic rubber  
Wheel Center: iron core/cast iron core

Drawings are for reference only and may differ from the product



Picture may differ from original product

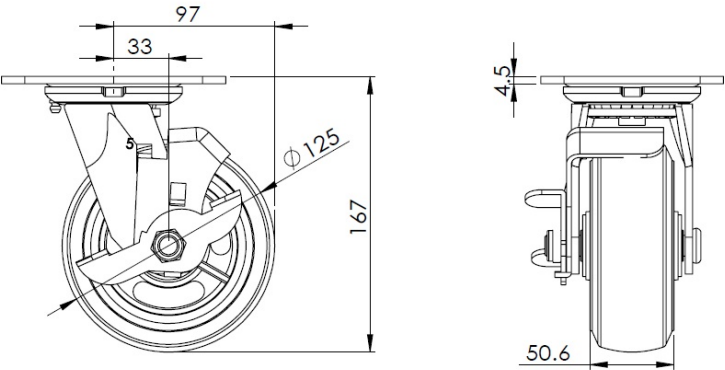
Technical Data

<input checked="" type="radio"/> Imperial <input type="radio"/> Metric	
Wheel Diameter	5 "
Wheel Width	2 "
Wheel Bearing	Wheel With Annual Ball Bearing
Plate Size	5-7/16 " x 4-3/8 "
Bolt Hole Spacing	4-1/8 " x 3-1/16 "
Plate Hole	13/16 " 3/8 "
Offset	1-5/16 "
Swivel Interference	7-11/16 "
Overall Height	6-5/8 "
Swivel Radius	3-7/8 "
Hardness Of Tread	80±5° Shore A
Load Capacity (Dynamic)	441lbs
Load Capacity (Static)	882lbs
Temperature	-4°F to +248°F
Fork Type	Swivel Caster With Side Brake
Stainless	N/A
Electrical Conductivity	N/A
Anti-Static	N/A
Weight	6.0lbs
Standard	ISO22883

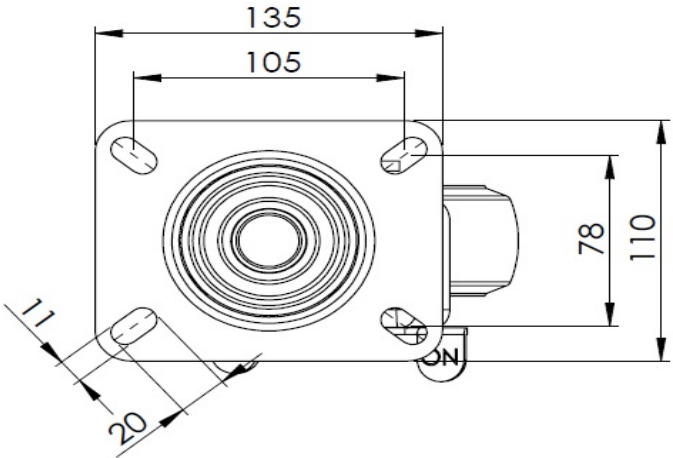
Advantages at a glance

Rolling Resistance	● ● ● ○ ○
Operating Noise	● ● ● ● ○
Floor Surface Preservation	● ● ● ● ○

Dimensions



Mounting



\* For any deviation between metric and imperial spec, please refer to the metric spec.