



1112 2" Wide General Purposes Caster Series

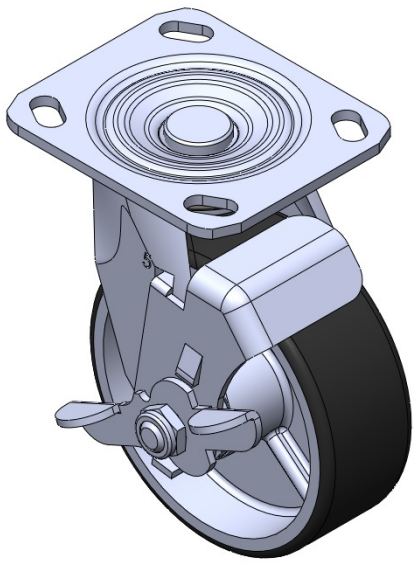
PU (black) Wheel Diameter × Wheel Width 125 x 45.5mm

EAN
TW-4111205004051

Casters with Side Brakes and With locking system. Welded Caster Fork. Zine-Plated. Mounting Type - Top Plate. Cast Iron core with High Quality Polyurethane Wheel Tread. Black. Bearings—Annual Ball Bearing.

Wheel tread: high quality polyurethane
Wheel Center: iron core/cast iron core

Drawings are for reference only and may differ from the product



Picture may differ from original product

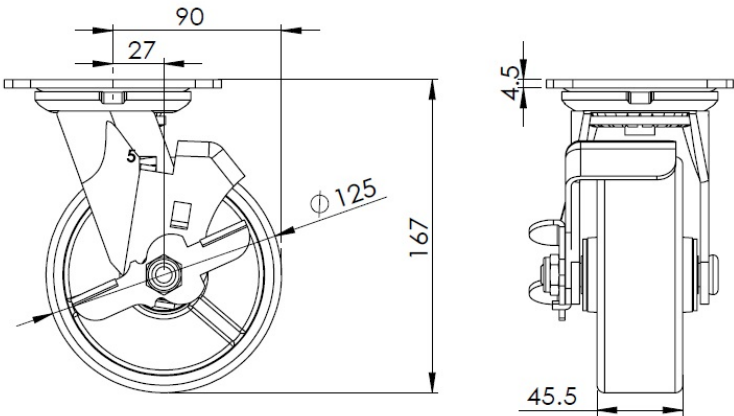
Technical Data

| | |
|--|--------------------------------|
| <input checked="" type="radio"/> Metric <input type="radio"/> Imperial | |
| Wheel Diameter | 125mm |
| Wheel Width | 45.5mm |
| Wheel Bearing | Wheel With Annual Ball Bearing |
| Plate Size | 115 x 100mm |
| Bolt Hole Spacing | 85 x 70mm |
| Plate Hole | 20 x 11mm |
| Offset | 27mm |
| Swivel Interference | 180mm |
| Overall Height | 167mm |
| Swivel Radius | 90mm |
| Hardness Of Tread | 92±5° Shore A |
| Load Capacity (Dynamic) | 360kgs |
| Load Capacity (Static) | 540kgs |
| Temperature | -20°C to +70°C |
| Fork Type | Swivel Caster With Side Brake |
| Stainless | N/A |
| Electrical Conductivity | N/A |
| Anti-Static | N/A |
| Weight | 2.70kgs |
| Standard | ISO22883 |

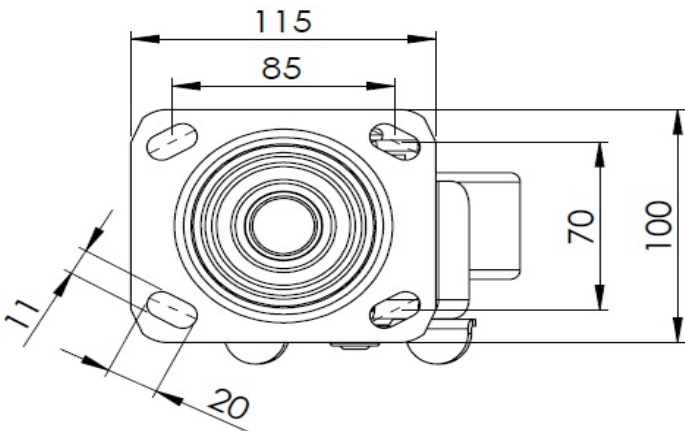
Advantages at a glance

| | |
|----------------------------|-----------|
| Rolling Resistance | ● ● ● ○ ○ |
| Operating Noise | ● ● ● ● ○ |
| Floor Surface Preservation | ● ● ● ● ○ |

Dimensions



Mounting



* For any deviation between metric and imperial spec, please refer to the metric spec.