



1112 2" Wide General Purposes Caster Series

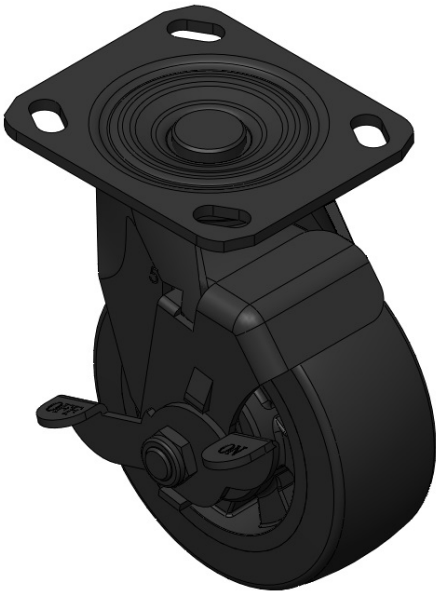
PPU wheel (black) wheel diameter × wheel width 125 x 49mm

EAN
TW-4111205004052

Casters with Side Brakes and With locking system. Welded Caster Fork. Electroplated surface. Mounting Type - Top Plate. High-Quality Impact-Resistant Polypropylene Wheel Center with thermoplastic polyurethane (TPU) Wheel Tread. Black. Bearings—Ball Bearings.

Wheel surface: high quality thermoplastic rubber polyurethane (TPU)
Wheel Center: Made of high-quality impact-resistant polypropylene

Drawings are for reference only and may differ from the product



Picture may differ from original product

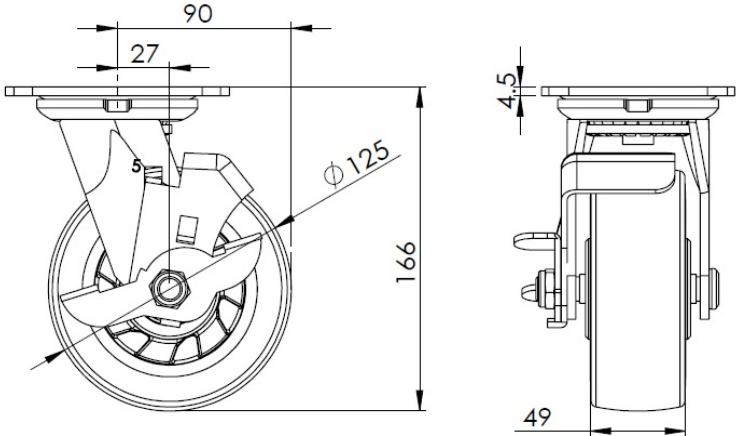
Technical Data

<input checked="" type="radio"/> Metric <input type="radio"/> Imperial	
Wheel Diameter	125mm
Wheel Width	49mm
Wheel Bearing	Wheels With Ball Bearings
Plate Size	115 x 100mm
Bolt Hole Spacing	85 x 70mm
Plate Hole	20 x 11mm
Offset	27mm
Swivel Interference	180mm
Overall Height	166mm
Swivel Radius	90mm
Hardness Of Tread	94±5° Shore A
Load Capacity (Dynamic)	250kgs
Load Capacity (Static)	375kgs
Temperature	-20°C to +70°C
Fork Type	Swivel Caster With Side Brake
Stainless	N/A
Electrical Conductivity	N/A
Anti-Static	N/A
Weight	2.60kgs
Standard	ISO22883

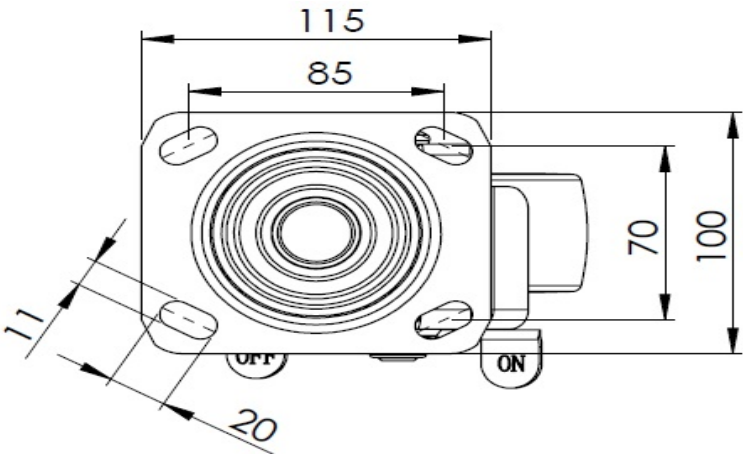
Advantages at a glance

Rolling Resistance	● ● ● ● ○
Operating Noise	● ● ● ● ○
Floor Surface Preservation	● ● ● ● ○

Dimensions



Mounting



* For any deviation between metric and imperial spec, please refer to the metric spec.