



1112 2" Wide General Purposes Caster Series

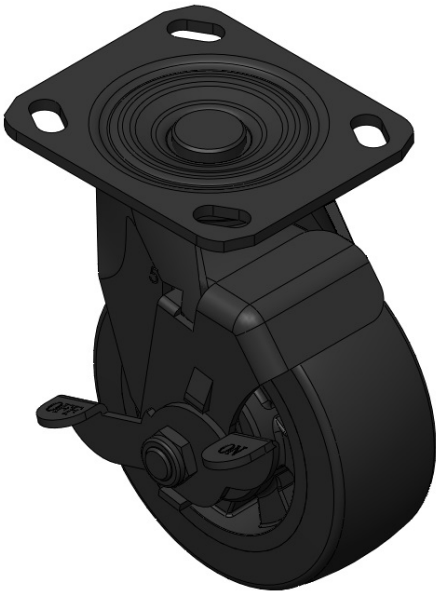
PPU wheel (black) wheel diameter × wheel width 125 x 49mm

EAN
TW-4111205004052

Casters with Side Brakes and With locking system. Welded Caster Fork. Electroplated surface. Mounting Type - Top Plate. High-Quality Impact-Resistant Polypropylene Wheel Center with thermoplastic polyurethane (TPU) Wheel Tread. Black. Bearings—Ball Bearings.

Wheel surface: high quality thermoplastic rubber polyurethane (TPU)
Wheel Center: Made of high-quality impact-resistant polypropylene

Drawings are for reference only and may differ from the product



Picture may differ from original product

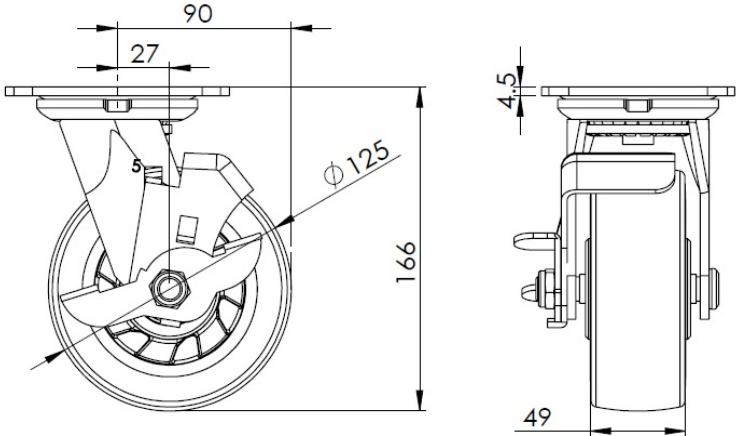
Technical Data

<input checked="" type="radio"/> Imperial <input type="radio"/> Metric	
Wheel Diameter	5 "
Wheel Width	2 "
Wheel Bearing	Wheels With Ball Bearings
Plate Size	4-9/16 " x 4 "
Bolt Hole Spacing	3-3/8 " x 2-3/4 "
Plate Hole	13/16 " 3/8 "
Offset	1-1/16 "
Swivel Interference	180
Overall Height	6-9/16 "
Swivel Radius	3-9/16 "
Hardness Of Tread	94±5° Shore A
Load Capacity (Dynamic)	551lbs
Load Capacity (Static)	827lbs
Temperature	-4°F to +158°F
Fork Type	Swivel Caster With Side Brake
Stainless	N/A
Electrical Conductivity	N/A
Anti-Static	N/A
Weight	5.7lbs
Standard	ISO22883

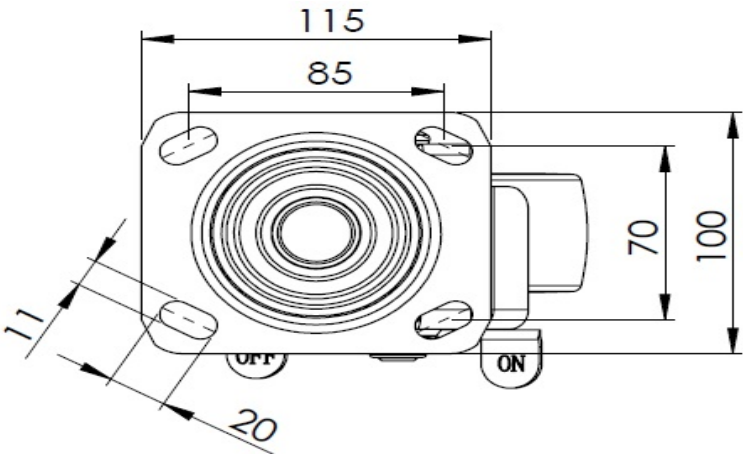
Advantages at a glance

Rolling Resistance	● ● ● ● ○
Operating Noise	● ● ● ● ○
Floor Surface Preservation	● ● ● ● ○

Dimensions



Mounting



* For any deviation between metric and imperial spec, please refer to the metric spec.