



1112 2" Wide General Purposes Caster Series

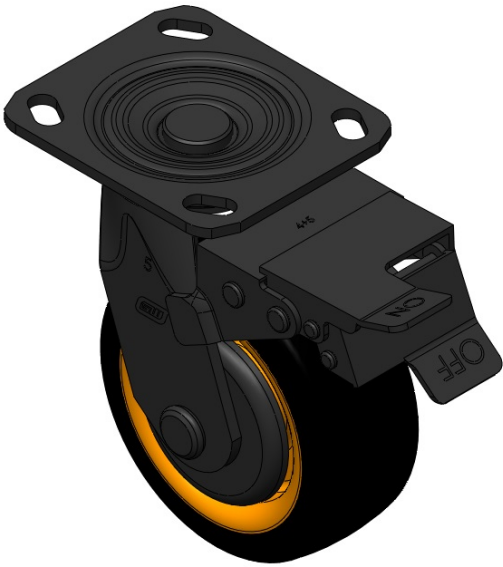
PPR (orange-yellow-black) Wheel Diameter × Wheel Width 125 x 50mm

EAN
TW-4111205004056

Casters with a front brake and With locking system. Welded Caster Fork. Electroplated surface. Mounting Type - Top Plate. High-Quality Impact-Resistant Polypropylene Wheel Center with High-Quality Reinforced Polypropylene Rubber (TPR) Wheel Tread. Orange and black color. Bearings: Ball Bearings.

Wheel tread: Thermoplastic rubber elastomer (TPR)
Wheel Center: Made of high-quality impact-resistant polypropylene

Drawings are for reference only and may differ from the product



Picture may differ from original product

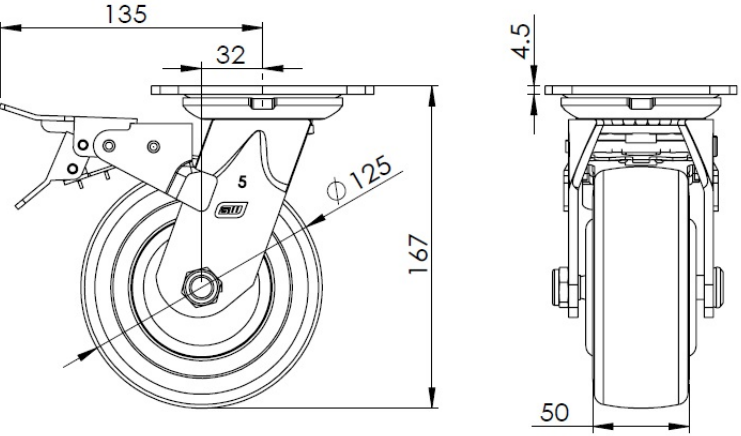
Technical Data

| | |
|--|--------------------------------|
| <input checked="" type="radio"/> Metric <input type="radio"/> Imperial | |
| Wheel Diameter | 125mm |
| Wheel Width | 50mm |
| Wheel Bearing | Wheels With Ball Bearings |
| Plate Size | 115 x 100mm |
| Bolt Hole Spacing | 85 x 70mm |
| Plate Hole | 2011mm |
| Offset | 32mm |
| Swivel Interference | 270mm |
| Overall Height | 167mm |
| Swivel Radius | 135mm |
| Hardness Of Tread | 82±5° Shore A |
| Load Capacity (Dynamic) | 180kgs |
| Load Capacity (Static) | 360kgs |
| Temperature | -20°C to +60°C |
| Fork Type | Swivel Caster With Front Brake |
| Stainless | N/A |
| Electrical Conductivity | N/A |
| Anti-Static | N/A |
| Weight | 2.60kgs |
| Standard | ISO22883 |

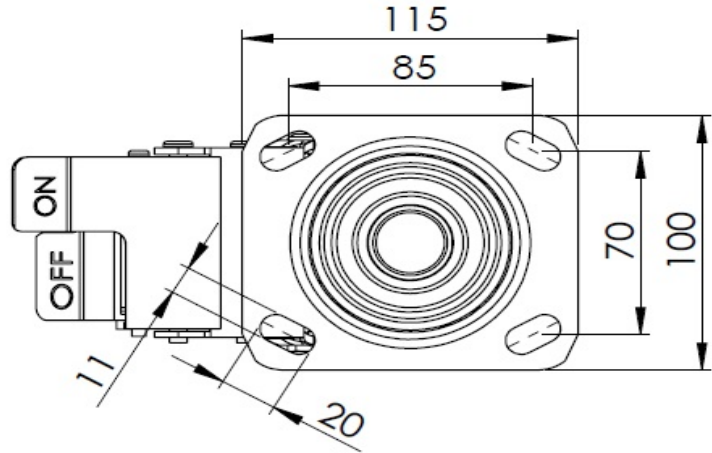
Advantages at a glance

| | |
|----------------------------|-----------|
| Rolling Resistance | ● ● ● ● ○ |
| Operating Noise | ● ● ● ● ○ |
| Floor Surface Preservation | ● ● ● ● ● |

Dimensions



Mounting



* For any deviation between metric and imperial spec, please refer to the metric spec.