



1112 2" Wide General Purposes Caster Series

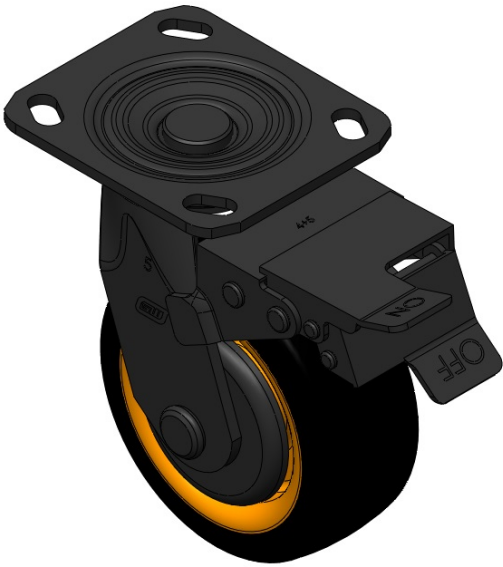
PPR (orange-yellow-black) Wheel Diameter × Wheel Width 125 x 50mm

EAN
TW-4111205004056

Casters with a front brake and With locking system. Welded Caster Fork. Electroplated surface. Mounting Type - Top Plate. High-Quality Impact-Resistant Polypropylene Wheel Center with High-Quality Reinforced Polypropylene Rubber (TPR) Wheel Tread. Orange and black color. Bearings: Ball Bearings.

Wheel tread: Thermoplastic rubber elastomer (TPR)
Wheel Center: Made of high-quality impact-resistant polypropylene

Drawings are for reference only and may differ from the product



Picture may differ from original product

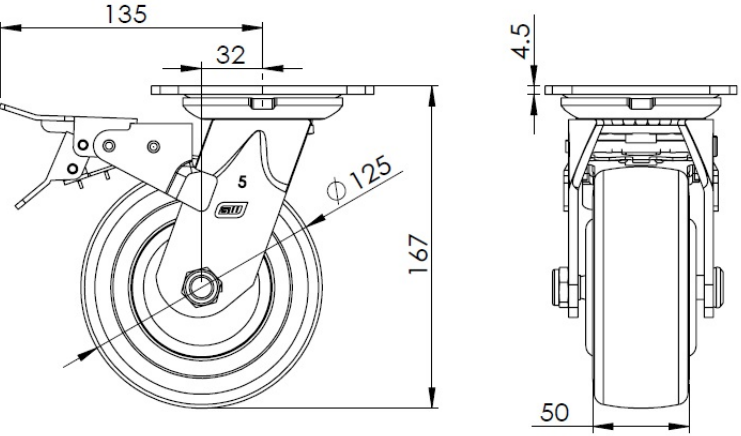
Technical Data

<input checked="" type="radio"/> Imperial <input type="radio"/> Metric	
Wheel Diameter	5 "
Wheel Width	2 "
Wheel Bearing	Wheels With Ball Bearings
Plate Size	4-9/16 " x 4 "
Bolt Hole Spacing	3-3/8 " x 2-3/4 "
Plate Hole	13/16 " 3/8 "
Offset	1-5/16 "
Swivel Interference	270
Overall Height	6-5/8 "
Swivel Radius	5-7/16 "
Hardness Of Tread	82±5° Shore A
Load Capacity (Dynamic)	397lbs
Load Capacity (Static)	794lbs
Temperature	-4°F to +140°F
Fork Type	Swivel Caster With Front Brake
Stainless	N/A
Electrical Conductivity	N/A
Anti-Static	N/A
Weight	5.7lbs
Standard	ISO22883

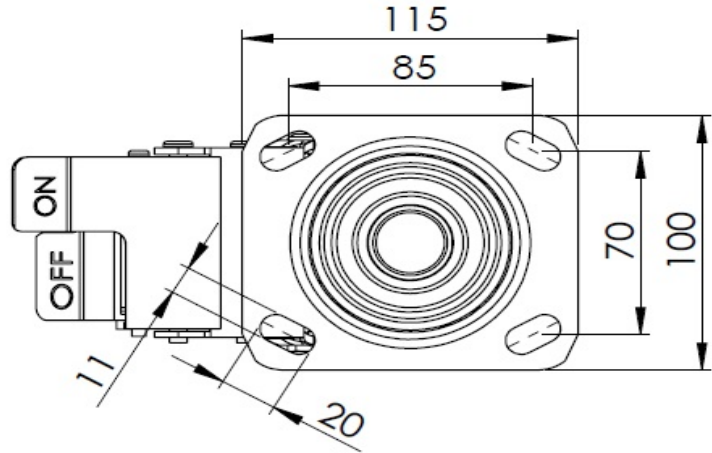
Advantages at a glance

Rolling Resistance	● ● ● ● ○
Operating Noise	● ● ● ● ○
Floor Surface Preservation	● ● ● ● ●

Dimensions



Mounting



* For any deviation between metric and imperial spec, please refer to the metric spec.