



1112 2" Wide General Purposes Caster Series

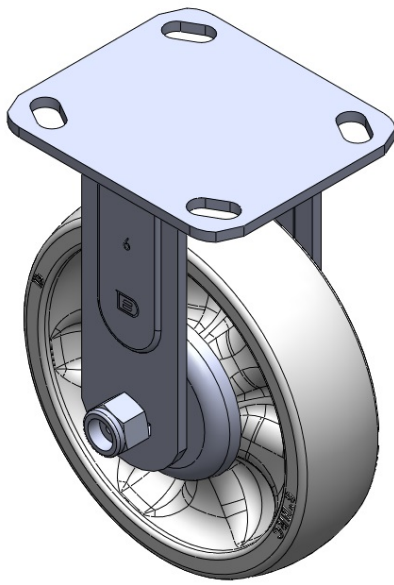
WMRC Wheel Diameter × Wheel Width 150 x 40mm

EAN  
TW-4111206001045

Rigid Caster with Welded Caster Fork Zine-Plated, Mounting Type - Top Plate Reinforced thermoplastic Wheel Center and tread White, Bearing—Ball Bearing.

Wheel tread: Thermoplastic  
Wheel Center: Thermoplastic

Drawings are for reference only and may differ from the product



Picture may differ from original product

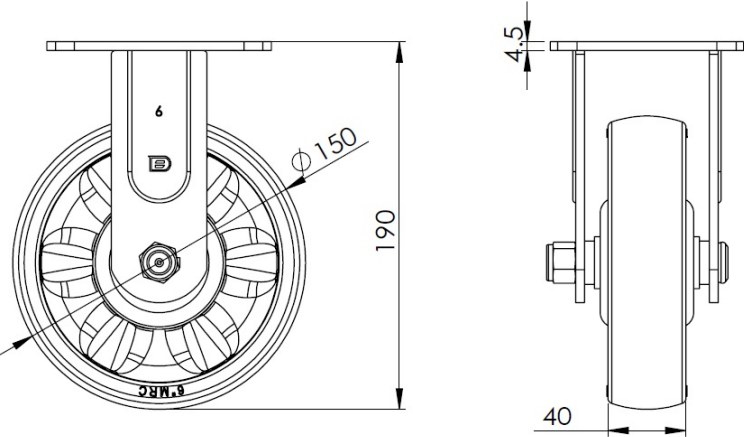
Technical Data

<input checked="" type="radio"/> Imperial <input type="radio"/> Metric	
Wheel Diameter	6 "
Wheel Width	1-5/8 "
Wheel Bearing	Wheel With Annual Ball Bearing
Plate Size	4-9/16 " x 4 "
Bolt Hole Spacing	3-3/8 " x 2-3/4 "
Plate Hole	13/16 " x 3/8 "
Overall Height	7-1/2 "
Hardness Of Tread	75±5° Shore D
Load Capacity (Dynamic)	661lbs
Load Capacity (Static)	992lbs
Temperature	-4°F to +176°F
Fork Type	Rigid Caster
Stainless	N/A
Electrical Conductivity	N/A
Anti-Static	N/A
Weight	3.3lbs
Standard	ISO22883

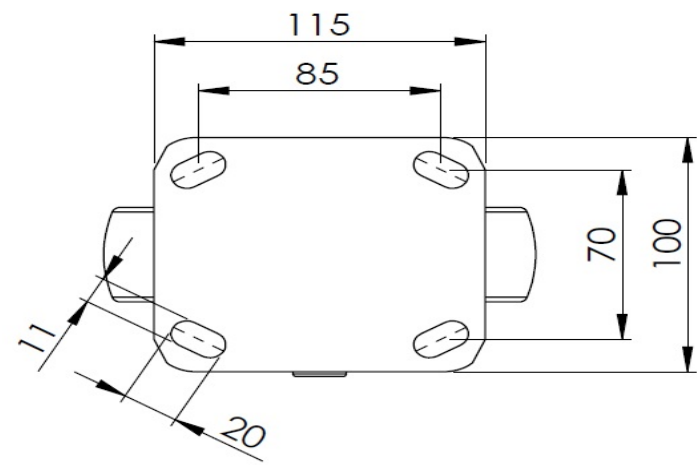
Advantages at a glance

Rolling Resistance	● ● ● ● ●
Operating Noise	● ● ○ ○ ○
Floor Surface Preservation	● ● ○ ○ ○

Dimensions



Mounting



\* For any deviation between metric and imperial spec, please refer to the metric spec.