

1112 Long Bead Series

PPR wheel (grey) wheel diameter × wheel width 152 x 50.5mm

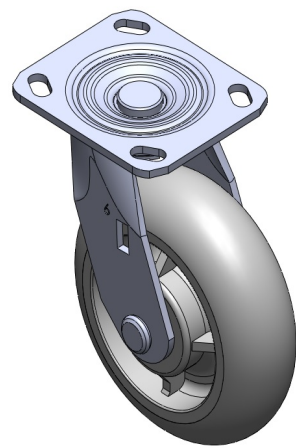
EAN

TW-4111206002028

Swivel caster with welded steel frame  
Gold-plated finish, baseplate mounting  
Impact-resistant polypropylene wheel core with thermoplastic elastomer (TPR) tread  
Gray, wheel bearing—precision long bead

Wheel tread: Thermoplastic rubber elastomer (TPR)  
Wheel core: Made of high-quality impact-resistant polypropylene

Product descriptions are for reference only. The actual product shall prevail.



Picture may differ from original product

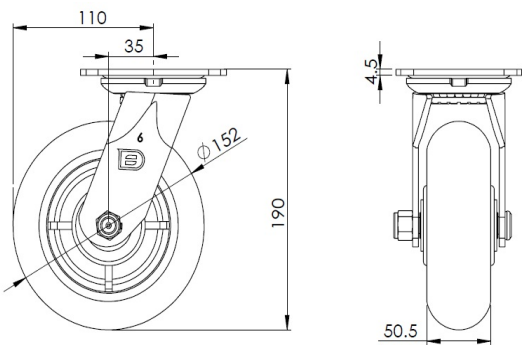
Technical Data

<input checked="" type="radio"/> Metric <input type="radio"/> Imperial	
Wheel Diameter	152mm
Wheel Width	50.5mm
Wheel Bearing	Wheel equipped with precision, long-ball
Plate size	115 x 100mm
Base plate hole spacing	85 x 70mm
Plate hole	20 x 11mm
Offset	35mm
Swivel Interference	220mm
Overall height	190mm
Swivel Radius	110mm
Hardness of tread	82±5° Shore A
Load capacity (dynamic)	160kgs
Load capacity (static)	240kgs
Temperature	-20°C to +60°C
Stand Style	activity
Stainless steel	N/A
Conductive	N/A
Anti	N/A
Weight	2.0kgs
Standard	ISO22883

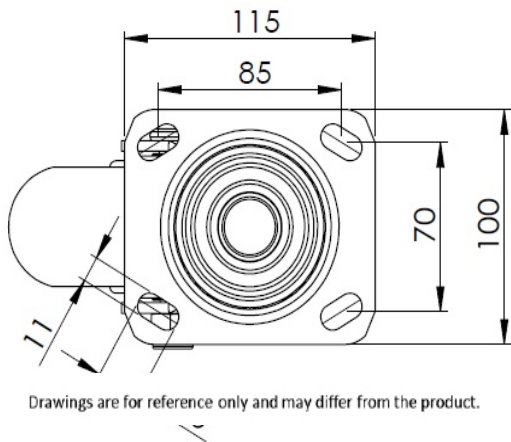
Advantages at a glance

Rolling Resistance	● ● ● ● ○
Operating Noise	● ● ● ● ○
Floor Surface Preservation	● ● ● ● ●

Dimensions



Mounting



Drawings are for reference only and may differ from the product.

\* For any deviation between metric and imperial spec, please refer to the metric spec.