



1112 2" Wide General Purposes Caster Series

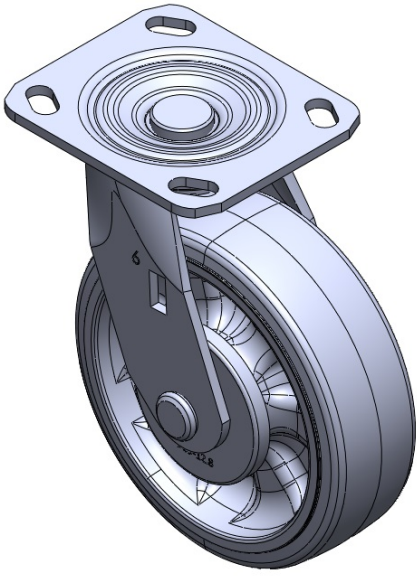
W Resolute Wheel Diameter × Wheel Width 152 x 50mm

EAN  
TW-4111206002048

Swivel Caster with Welded Caster Fork E-Coat Finish, Mounting Type - Top Plate (with iron cover) Reinforced, impact-resistant High-quality Impact Resistance Polypropylene core with High-Quality Thermoplastic Rubber (TPR) tread Gray color, Bearing—precision long bead

Wheel tread: Thermoplastic rubber elastomer (TPR)  
Wheel Center: Made of high-quality impact-resistant polypropylene

Drawings are for reference only and may differ from the product



Picture may differ from original product

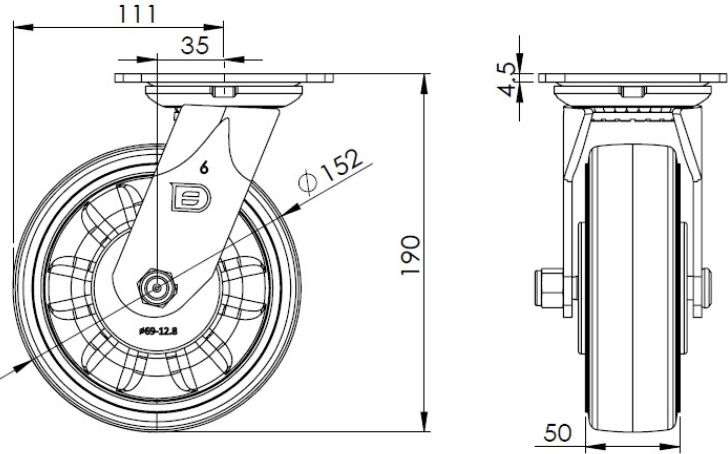
Technical Data

<input checked="" type="radio"/> Imperial <input type="radio"/> Metric	
Wheel Diameter	6 "
Wheel Width	2 "
Wheel Bearing	Wheel With Annual Ball Bearing
Plate Size	4-9/16 " x 4 "
Bolt Hole Spacing	3-3/8 " x 2-3/4 "
Plate Hole	13/16 " x 3/8 "
Offset	1-3/8 "
Swivel Interference	8-7/8 "
Overall Height	7-1/2 "
Swivel Radius	4-7/16 "
Hardness Of Tread	72±5° Shore A
Load Capacity (Dynamic)	600lbs
Load Capacity (Static)	899lbs
Temperature	-4°F to +140°F
Fork Type	Swivel Caster
Stainless	N/A
Electrical Conductivity	N/A
Anti-Static	N/A
Weight	4.4lbs
Standard	ISO22883

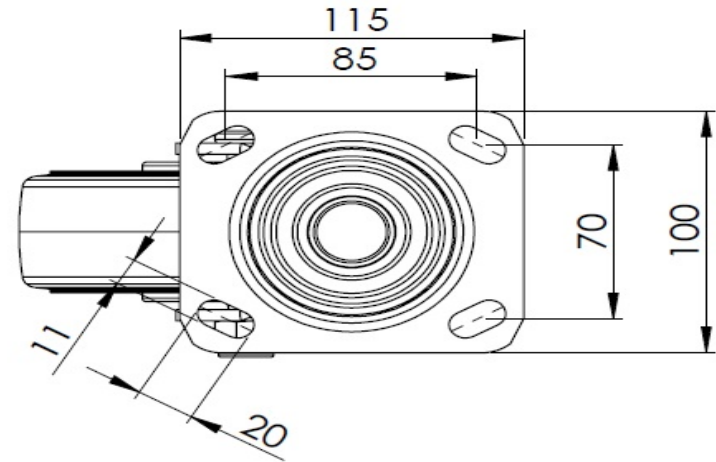
Advantages at a glance

Rolling Resistance	● ● ● ● ●
Operating Noise	● ● ● ● ●
Floor Surface Preservation	● ● ● ● ●

Dimensions



Mounting



\* For any deviation between metric and imperial spec, please refer to the metric spec.