



1112 2" Wide General Purposes Caster Series

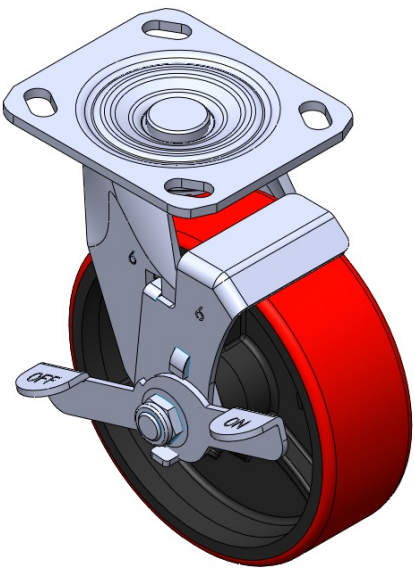
PU (red) Wheel Diameter × Wheel Width 150 x 49mm

EAN  
TW-4111206004063

Casters with Side Brakes and With locking system. Welded Caster Fork. Zine-Plated. Mounting Type - Top Plate. Cast Iron core with High Quality Polyurethane Wheel Tread. Cast Iron red. Bearings—Annual Ball Bearings.

Wheel tread: high quality polyurethane  
Wheel Center: iron core/cast iron core

Drawings are for reference only and may differ from the product



Picture may differ from original product

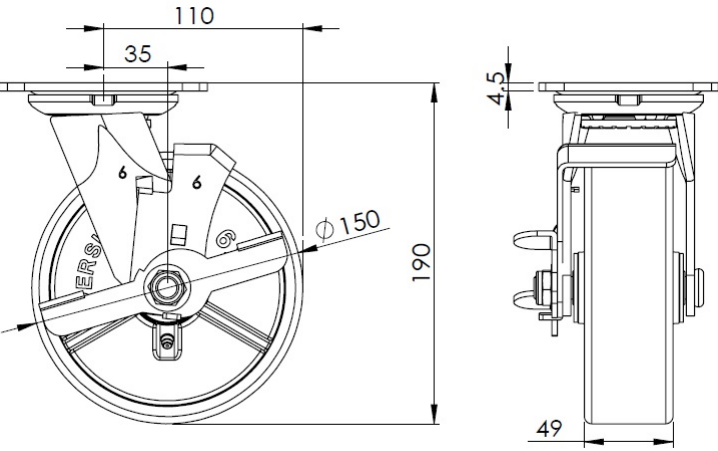
Technical Data

<input checked="" type="radio"/> Imperial <input type="radio"/> Metric	
Wheel Diameter	6 "
Wheel Width	2 "
Wheel Bearing	Wheel With Annual Ball Bearing
Plate Size	4-9/16 " x 4 "
Bolt Hole Spacing	3-3/8 " x 2-3/4 "
Plate Hole	13/16 x " 3/8 "
Offset	1-3/8 "
Swivel Interference	8-3/4 "
Overall Height	7-1/2 "
Swivel Radius	4-3/8 "
Hardness Of Tread	92±5° Shore A
Load Capacity (Dynamic)	904lbs
Load Capacity (Static)	1356lbs
Temperature	-4°F to +158°F
Fork Type	Swivel Caster With Side Brake
Stainless	N/A
Electrical Conductivity	N/A
Anti-Static	N/A
Weight	7.1lbs
Standard	ISO22883

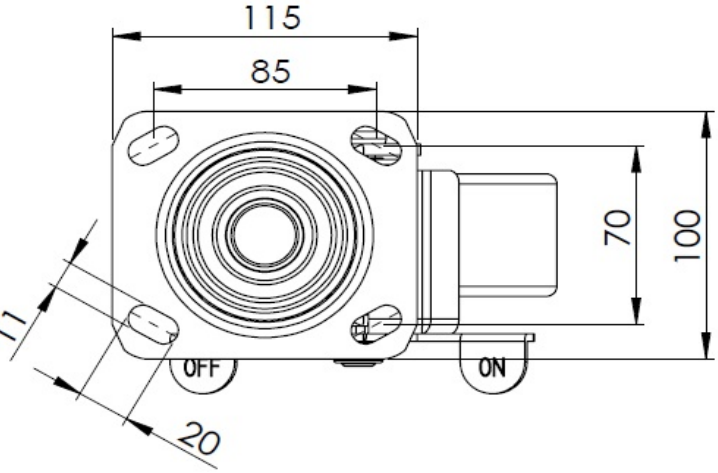
Advantages at a glance

Rolling Resistance	● ● ● ○ ○
Operating Noise	● ● ● ● ○
Floor Surface Preservation	● ● ● ● ○

Dimensions



Mounting



\* For any deviation between metric and imperial spec, please refer to the metric spec.