



1112 2" Wide General Purposes Caster Series

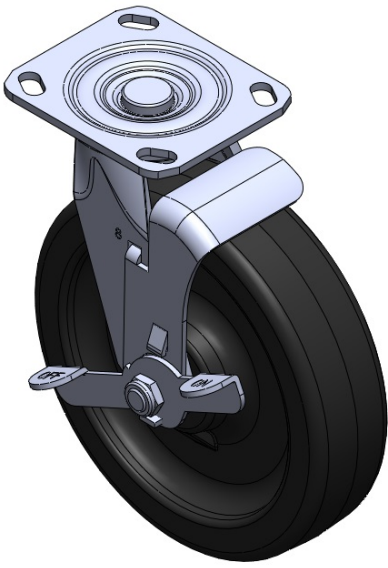
Phenolic (black) Wheel Diameter × Wheel Width 200 x 50mm

EAN
TW-4111208004025

Equipped with side-brake, locking Casters. Welded Caster Fork. Zine-Plated surface, Mounting Type - Top Plate. Compressed synthetic resin Wheel Center and Wheel Tread impregnated with softened fabric. Black, Bearing—Annual Ball Bearings.

Wheel surface: Bakelite wheels
Wheel Center: Bakelite wheel

Drawings are for reference only and may differ from the product



Picture may differ from original product

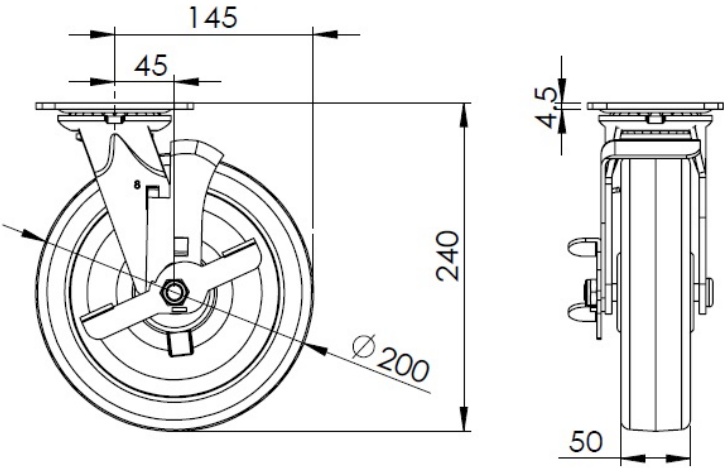
Technical Data

<input checked="" type="radio"/> Metric <input type="radio"/> Imperial	
Wheel Diameter	200mm
Wheel Width	50mm
Wheel Bearing	Wheel With Annual Ball Bearing
Plate Size	115 x 100mm
Bolt Hole Spacing	85 x 70mm
Plate Hole	20 x 11mm
Offset	45mm
Swivel Interference	290mm
Overall Height	240mm
Swivel Radius	145mm
Hardness Of Tread	80±5° Shore D
Load Capacity (Dynamic)	450kgs
Load Capacity (Static)	675kgs
Temperature	-20°C to +150°C
Fork Type	Swivel Caster With Side Brake
Stainless	N/A
Electrical Conductivity	N/A
Anti-Static	N/A
Weight	2.60kgs
Standard	ISO22883

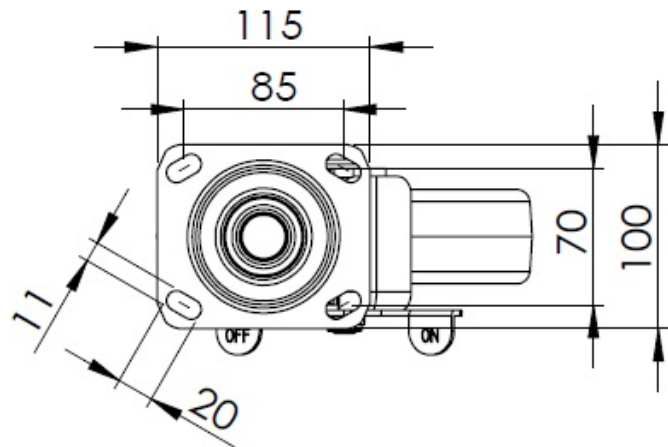
Advantages at a glance

Rolling Resistance	● ● ● ● ●
Operating Noise	● ● ○ ○ ○
Floor Surface Preservation	● ● ○ ○ ○

Dimensions



Mounting



* For any deviation between metric and imperial spec, please refer to the metric spec.